

Atlas of Details



Louis Henry Sullivan. Home Building Association 1914-1915

Author(s): Sabrina Strangio

Copyright: © 2023 The Formwork

URL: <https://www.detailsinsection.org/projects/home-building-association>

All rights reserved. No part of this publication may be reproduced, distributed, or transmitted in any form or by any means, including photocopying, recording, or other electronic or mechanical methods, without the prior permission of the publisher. For permission requests regarding the partial or total reproduction of this item, write to the editor at the address below.

Please note: printing of this item for personal, noncommercial use is permitted. The graphic materials contained here have been produced for an optimised screen visualisation. For a good quality print, original full bleed sheet format (A2 horizontal) are to be maintained; inkjet plotting on opaque coated paper should be preferred.

Atlas of Details is a research project to demonstrate how insightful a section can be, in order to represent the complexity of the architectural artifact, since it allows the simultaneous perception of materiality and form, of building envelope and interior spaces. Atlas of Details is a project by The Formwork, an association established by professors and PhD candidates with diverse academic backgrounds (history, architectural design, technology, preservation) working at the IUAV University in Venice and at the Milan Politecnico. For more information about the Atlas of Details and The Formwork, please contact info@theformwork.org.

The Formwork

Cultural association

Cannaregio 638,

30121 Venezia (VE)

<https://www.theformwork.org/staging>

<https://www.detailsinsection.org/staging>

info@theformwork.org

Louis Henry Sullivan **Home Building** **Association** 1914-1915

Text

Sabrina Strangio
IUAV Venezia

Drawings

Sabrina Strangio
IUAV Venezia

Architect

Louis Henry Sullivan (1856-1924)

Name of the building

Home Building Association

Site

Newark, Ohio, (USA);

Client

Emmet Melvin Baugher, Home Building Association Company

Engineer

J.F.Bonham

Decorations

Louis J.Millet (responsible for the decorations, interiors and colour scheme)
American Terra Cotta and Ceramic Company

Building permit

1914 building permits issued

Start of construction works

1914

Project variations

1946 first variant by William Camlin
2020 first building restoration by Rogers Kranjnak

End of construction works

1915

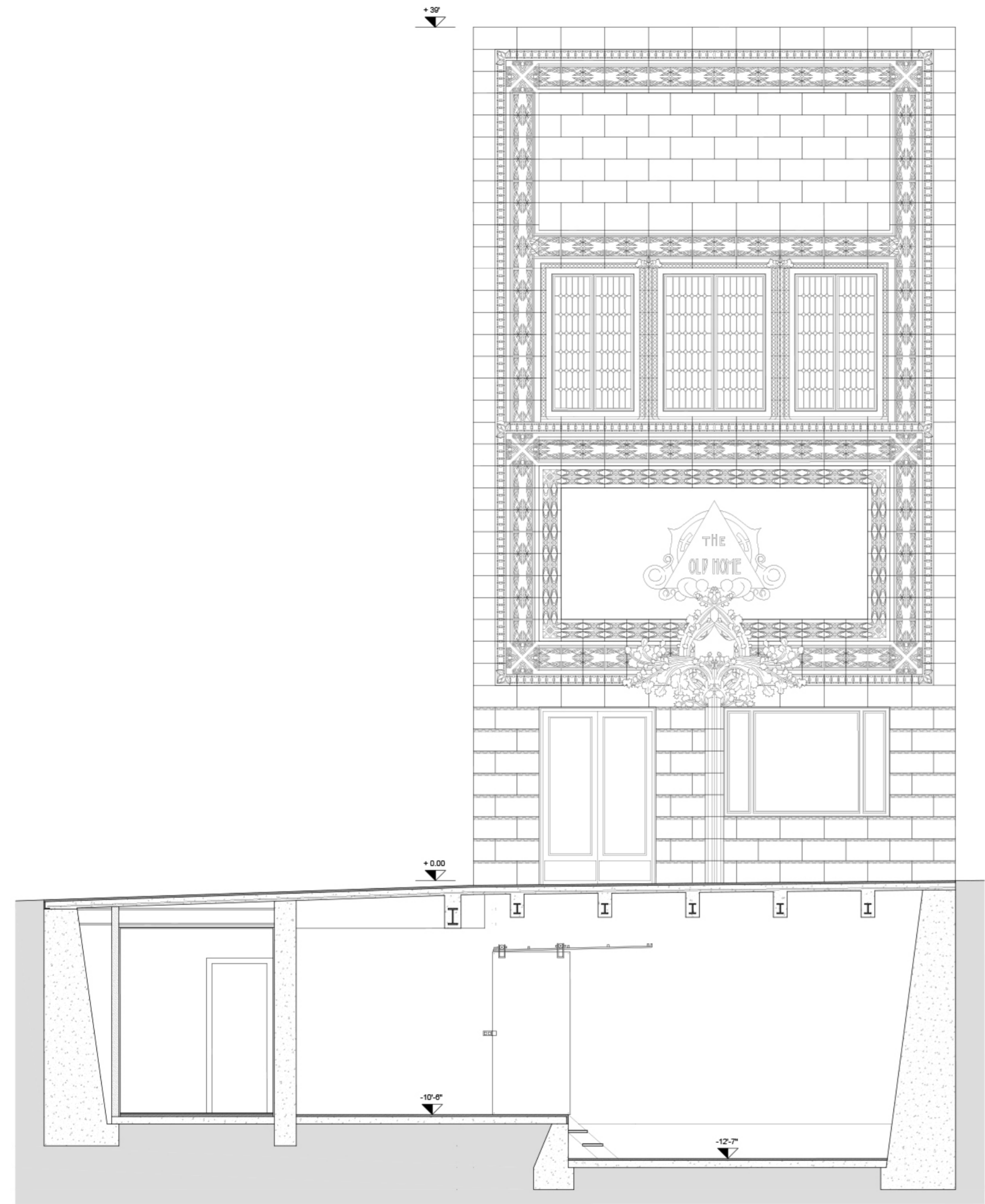
Construction system

Basement level: load-bearing retaining walls, foundations in existing stone, insertion of three foundation plinths for the central pillars. Reinforced concrete floor slab resting on the ground.

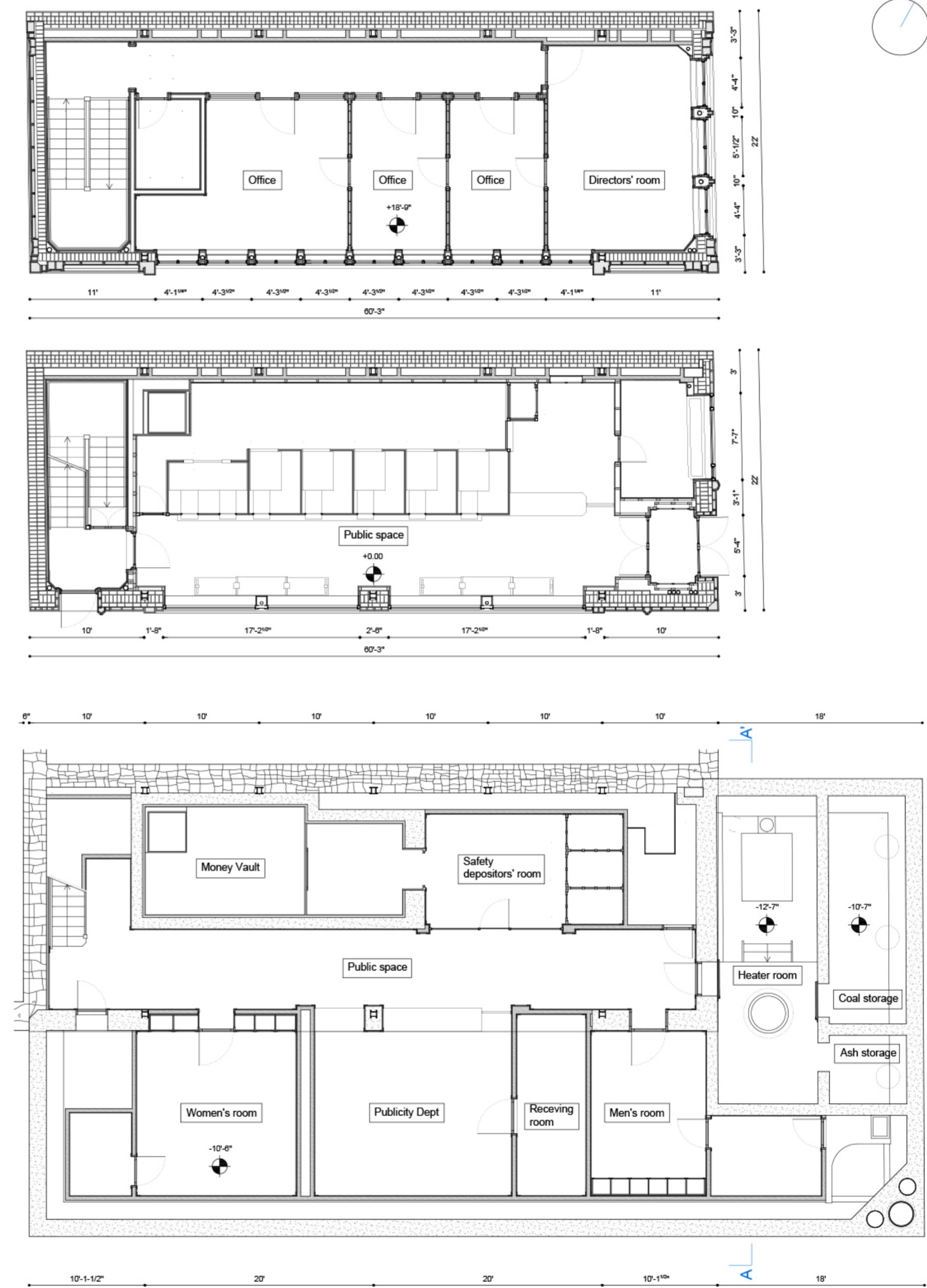
Floor above ground: metal structure, hollow quadrangular pillars, composed of two L-shaped elements (6"-8") and solid slabs (8"+7/16"), in Lally columns on the ground and second floor. Beams continuous double-T beams (24"-1-8).

Ceiling: joists resting on the main beams, composed the assembly of two double-T beams and L-shaped elements, on which rests a reinforced concrete slab.

Structure clad with light-coloured terracotta elements, use of solid mat-solid materials for the infill.

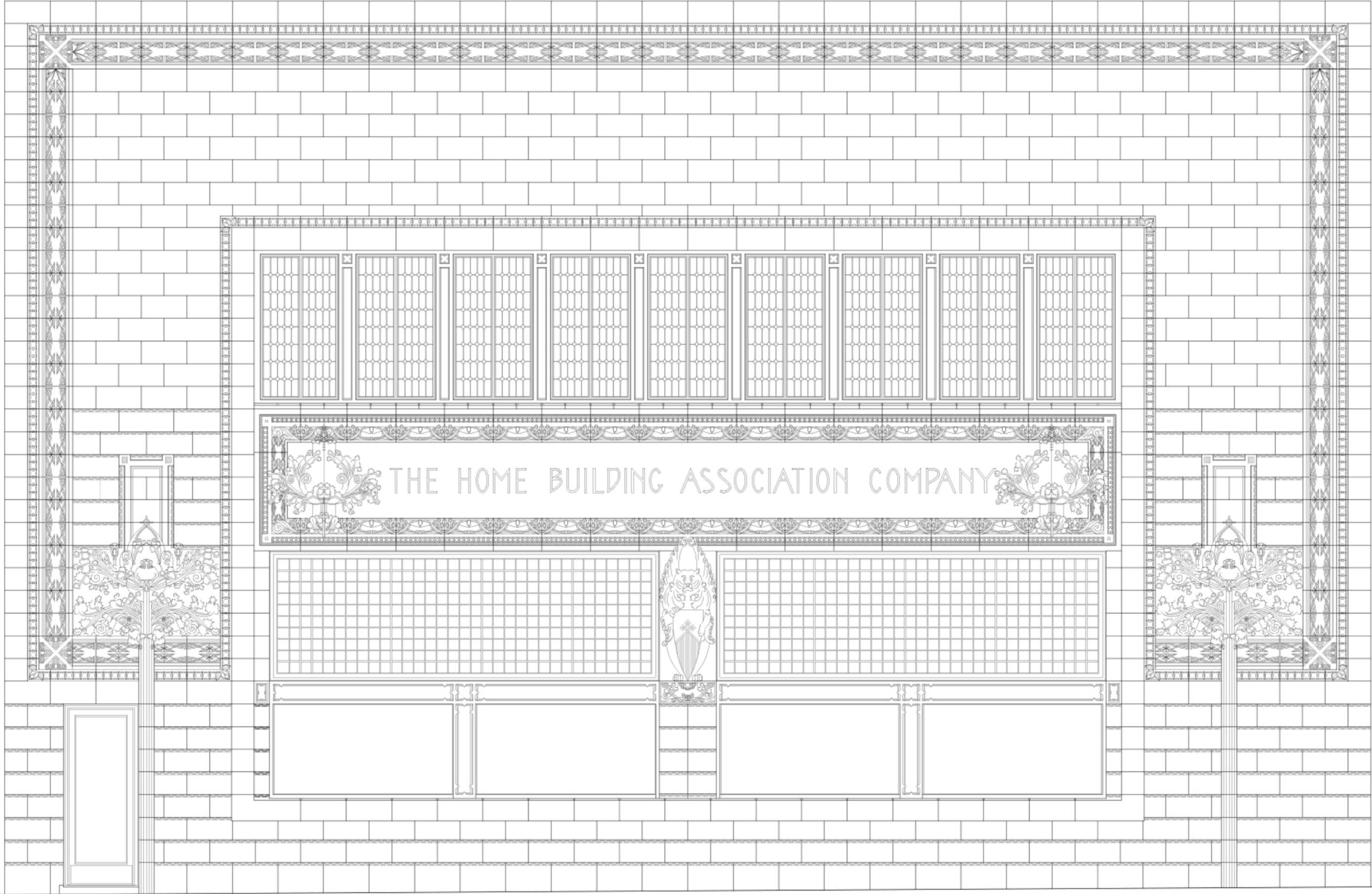


East Elevation, Section A-A'
Scale 1:50



Basement plan, Ground floor plan, First floor plan
Scale 1:100

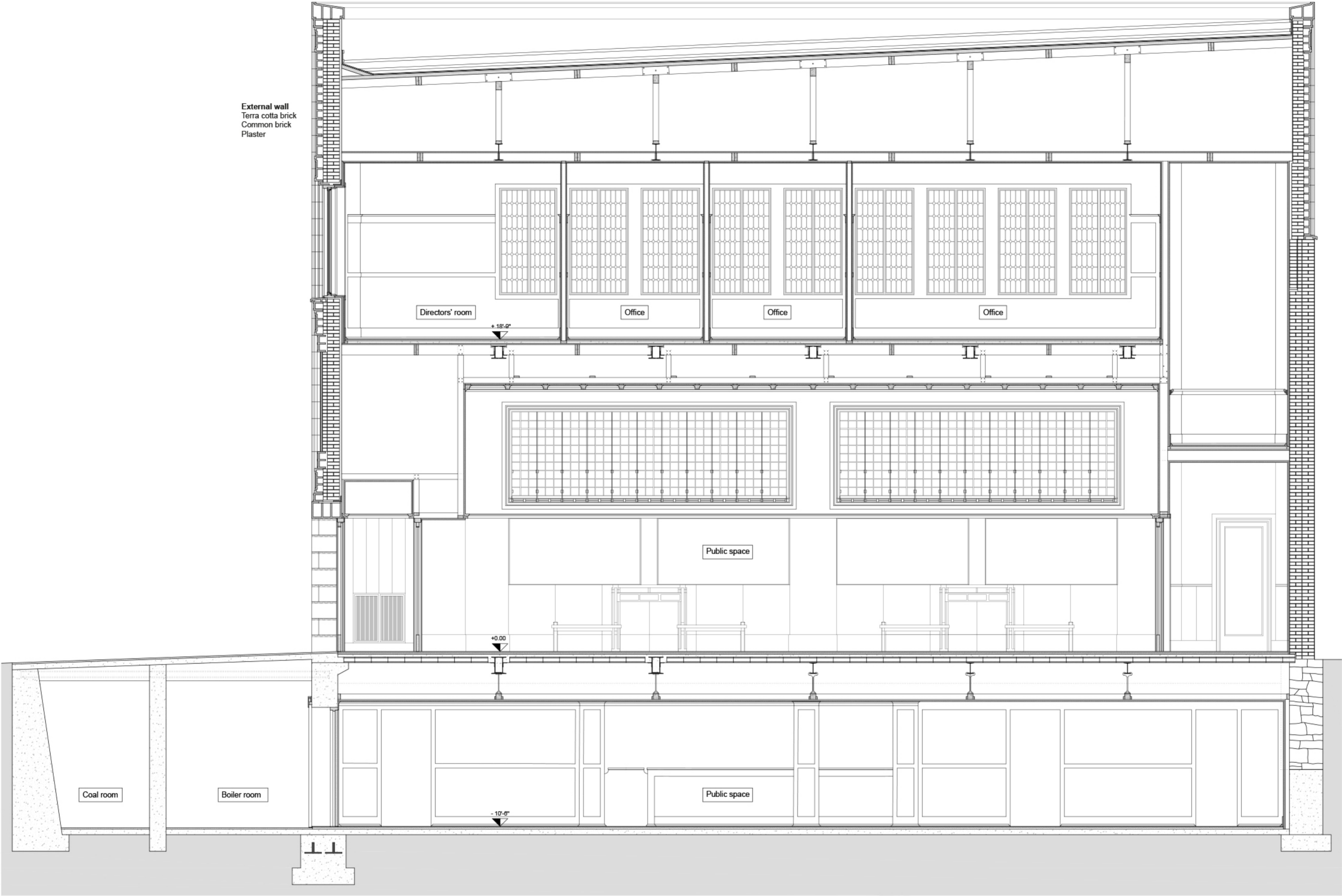
+ 39'



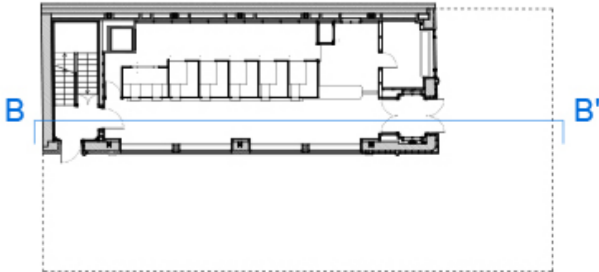
+ 0.00

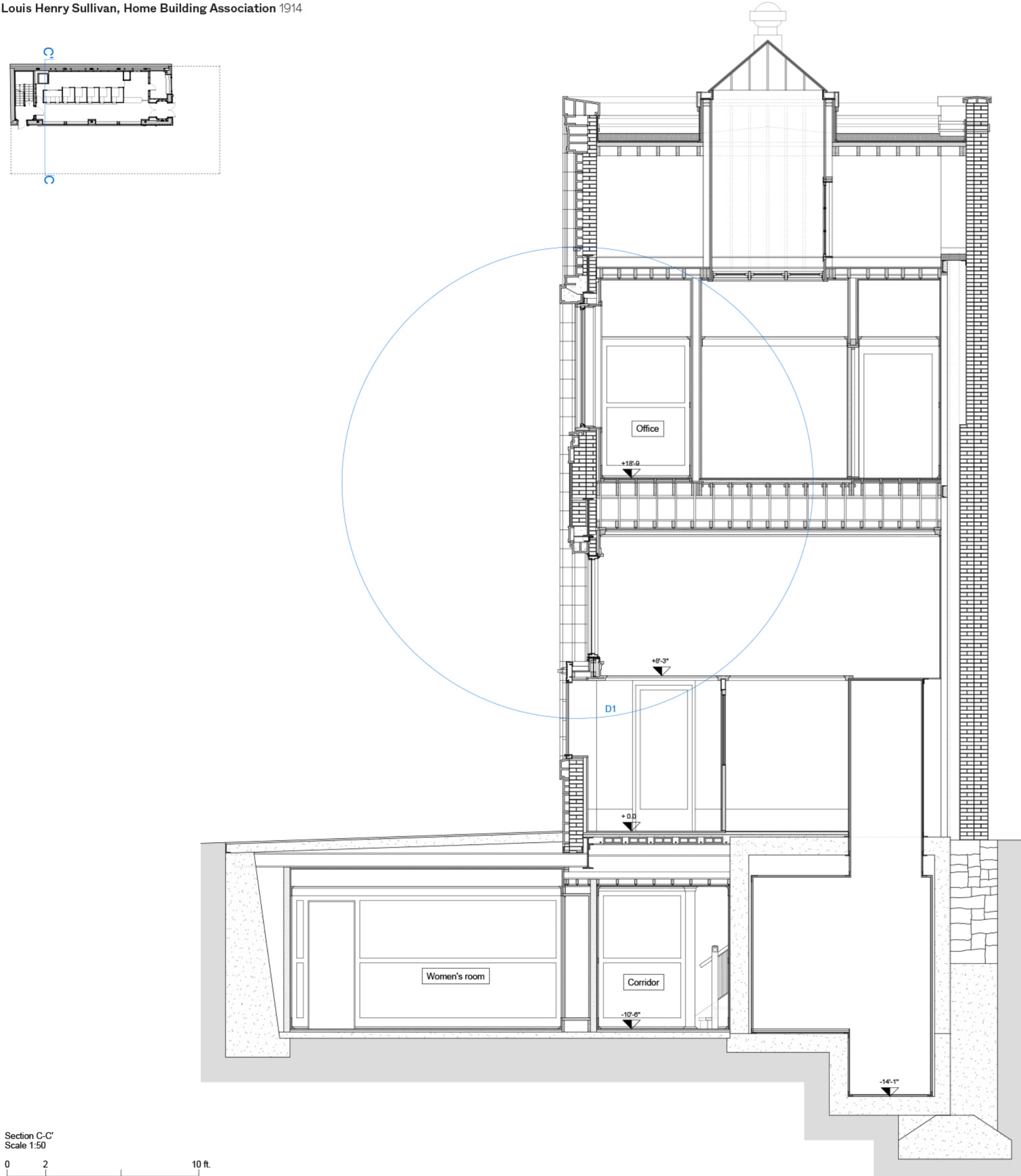
South Elevation
Scale 1:50

0 2 10 ft.



Section B-B'
Scala 1:50
0 2 10 ft.





External wall
Glass mosaic
Cement mortar
Chicken wire stapled to brick wall
Common brick
Plaster

