

# Atlas of Details



## **Nino Rosani. Grattaciolo Lancia 1954-1956**

Author(s): Vincenzo Greco

Copyright: © 2023 The Formwork

URL: <https://www.detailsinsection.org/projects/grattaciolo-lancia>

---

All rights reserved. No part of this publication may be reproduced, distributed, or transmitted in any form or by any means, including photocopying, recording, or other electronic or mechanical methods, without the prior permission of the publisher. For permission requests regarding the partial or total reproduction of this item, write to the editor at the address below.

Please note: printing of this item for personal, noncommercial use is permitted. The graphic materials contained here have been produced for an optimised screen visualisation. For a good quality print, original full bleed sheet format (A2 horizontal) are to be maintained; inkjet plotting on opaque coated paper should be preferred.

Atlas of Details is a research project to demonstrate how insightful a section can be, in order to represent the complexity of the architectural artifact, since it allows the simultaneous perception of materiality and form, of building envelope and interior spaces. Atlas of Details is a project by The Formwork, an association established by professors and PhD candidates with diverse academic backgrounds (history, architectural design, technology, preservation) working at the IUAV University in Venice and at the Milan Politecnico. For more information about the Atlas of Details and The Formwork, please contact [info@theformwork.org](mailto:info@theformwork.org).

### **The Formwork**

Cultural association

Cannaregio 638,

30121 Venezia (VE)

<https://www.theformwork.org>

<https://www.detailsinsection.org>

[info@theformwork.org](mailto:info@theformwork.org)

# Nino Rosani

# Grattacielo Lancia

1954-1956

### **Text**

Vincenzo Greco  
IUAV Venezia

### **Drawings**

Vincenzo Greco  
IUAV Venezia

### **Architect**

Nino Rosani (1909-2000)

### **Name of the building**

*Grattacielo Lancia*

### **Site**

Via Vincenzo Lancia, Milan (IT)

### **Client**

*Lancia*

### **Contractors**

SAICCA, Italcementi

### **Engineer**

Antonio Fornaroli, G. M. Pugno, M. Pratesi

### **Other actors**

Architects Gio Ponti and Alberto Rosselli (design consulting);  
Malugani (metal windows projects).

### **Building permit**

1954: building permit

### **Start of construction works**

1954: Start of construction works

### **Intermediate stages**

-

### **End of construction works**

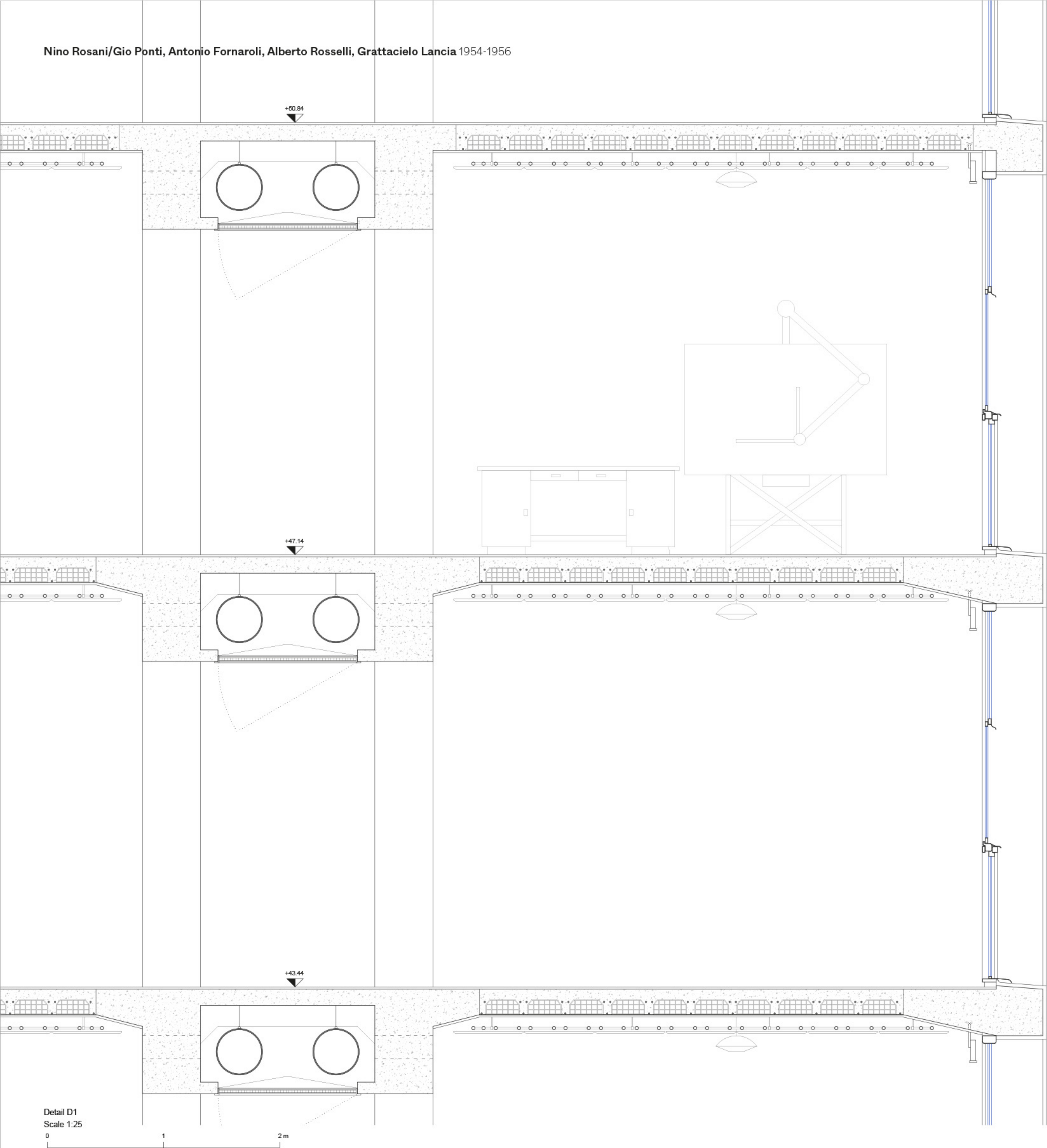
1956: end of construction works

1956 april 14: inauguration of the skyscraper

### **Construction system**

The structural system with frame and load-bearing partitions in reinforced concrete of which the entire building is made rests on the imposing reticular beam, also in reinforced concrete, which overlooks via Vincenzo Lancia. This system was adopted by Rosani to connect the two factions into which the industrial areas of the automotive group were divided. The structural system rests on two large reinforced concrete plinths placed at the two supports of the volume.

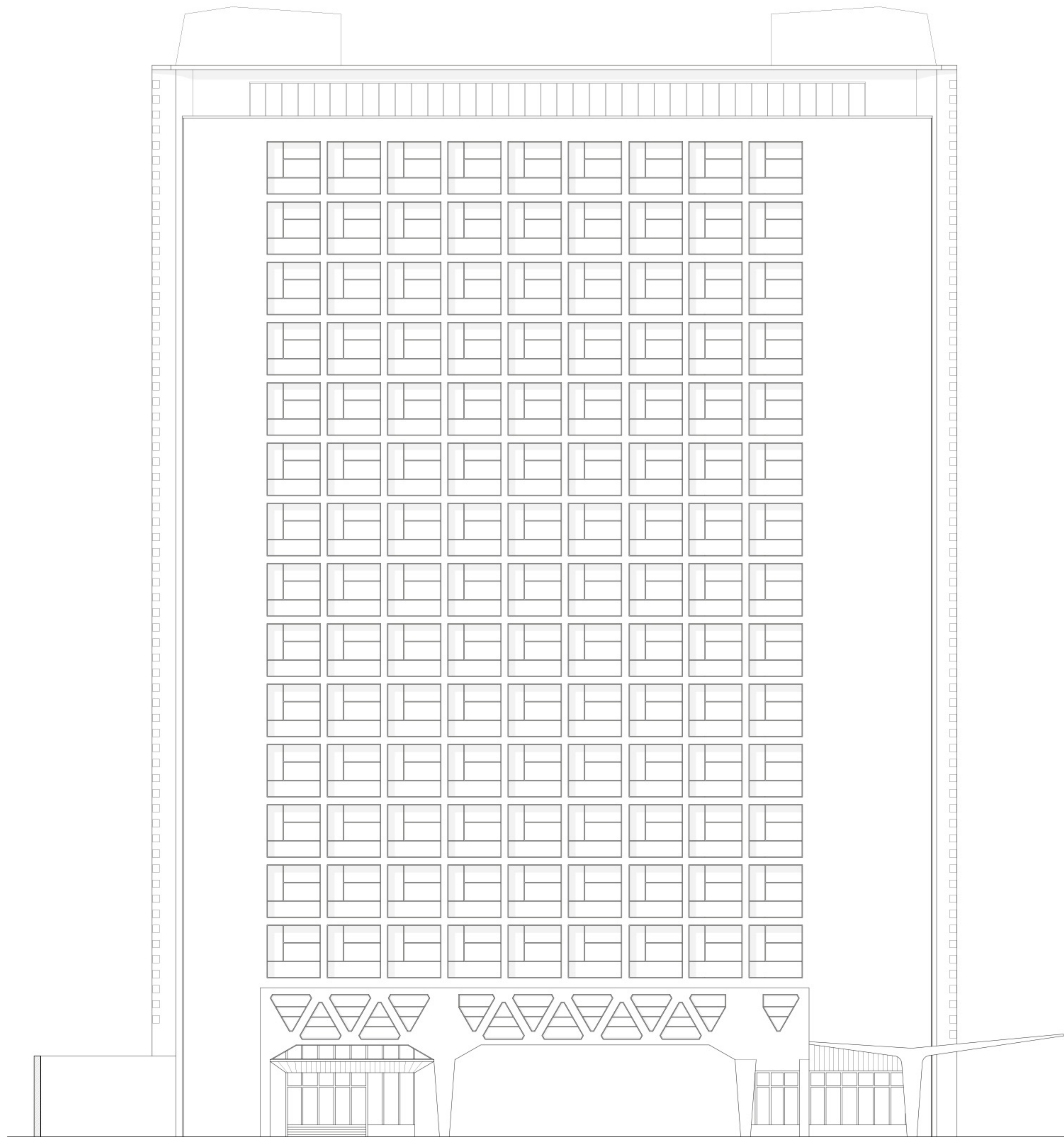
The floors are made of reinforced brick placed in the thickness of the beams that make up the structure in elevation.



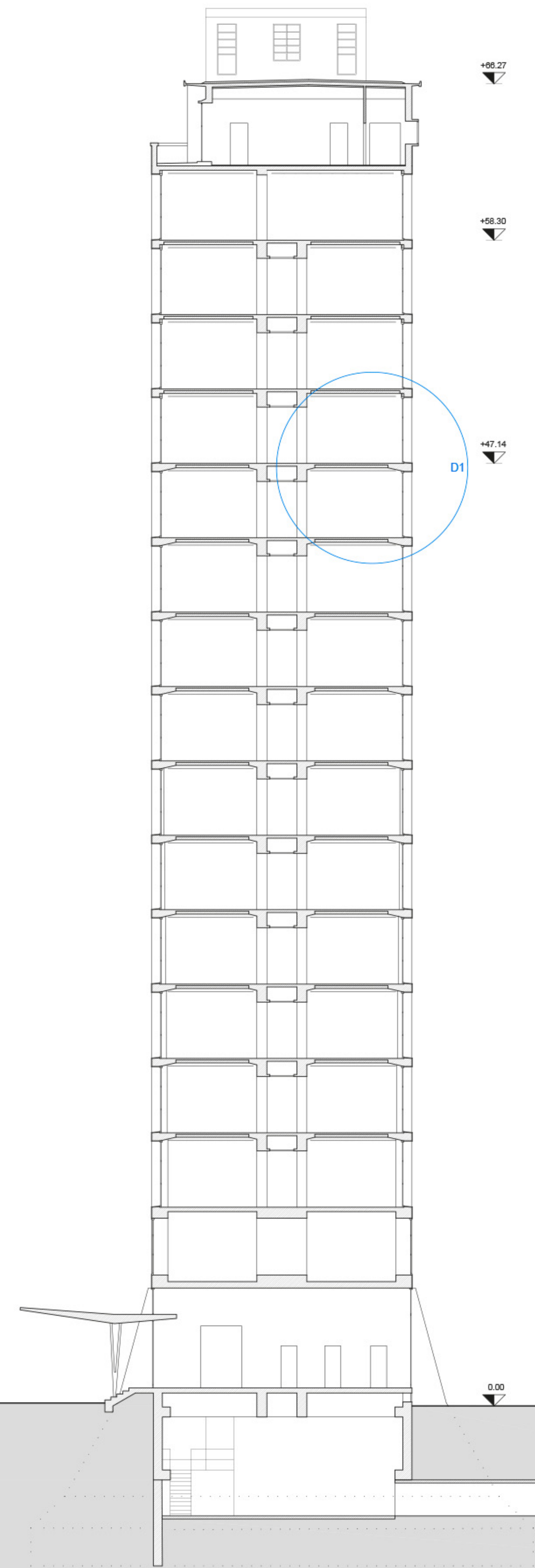
Detail D1  
Scale 1:25  
0 1 2 m







Elevation  
Scale 1:200  
0 1 5m



Cross section AA'

