

Atlas of Details



Luigi Figini, Gino Pollini. Chiesa della Madonna dei Poveri 1952-1955

Author(s): Andrea Bonomi

Copyright: © 2023 The Formwork

URL: <https://www.detailsinsection.org/projects/madonna-dei-poveri>

All rights reserved. No part of this publication may be reproduced, distributed, or transmitted in any form or by any means, including photocopying, recording, or other electronic or mechanical methods, without the prior permission of the publisher. For permission requests regarding the partial or total reproduction of this item, write to the editor at the address below.

Please note: printing of this item for personal, noncommercial use is permitted. The graphic materials contained here have been produced for an optimised screen visualisation. For a good quality print, original full bleed sheet format (A2 horizontal) are to be maintained; inkjet plotting on opaque coated paper should be preferred.

Atlas of Details is a research project to demonstrate how insightful a section can be, in order to represent the complexity of the architectural artifact, since it allows the simultaneous perception of materiality and form, of building envelope and interior spaces. Atlas of Details is a project by The Formwork, an association established by professors and PhD candidates with diverse academic backgrounds (history, architectural design, technology, preservation) working at the IUAV University in Venice and at the Milan Politecnico. For more information about the Atlas of Details and The Formwork, please contact info@theformwork.org.

The Formwork

Cultural association

Cannaregio 638,

30121 Venezia (VE)

<https://www.theformwork.org/staging>

<https://www.detailsinsection.org/staging>

info@theformwork.org

Luigi Figini, Gino Pollini

Chiesa della Madonna dei Poveri

1952-1955

Text

Andrea Bonomi
IUAV Venezia

Drawings

Andrea Bonomi
IUAV Venezia

Architects

Luigi Figini (1903–1984), Gino Pollini (1903–1991)

Name of the building

Chiesa della Madonna dei Poveri

Site

Piazza Madonna dei Poveri 1, Milano (Italia)

Client

Curia Diocesana di Milano

Engineers

Arturo Danusso (1880-1968), Piero Locatelli, Francesco Weisz

Other actors

Catella Fratelli di Moncalieri (marble altar),
Padre Costantino Ruggero (copper tabernacle, great cross)

Start of construction works

1952 (blessing of the 'first stone')
1954 (the construction site is opened)

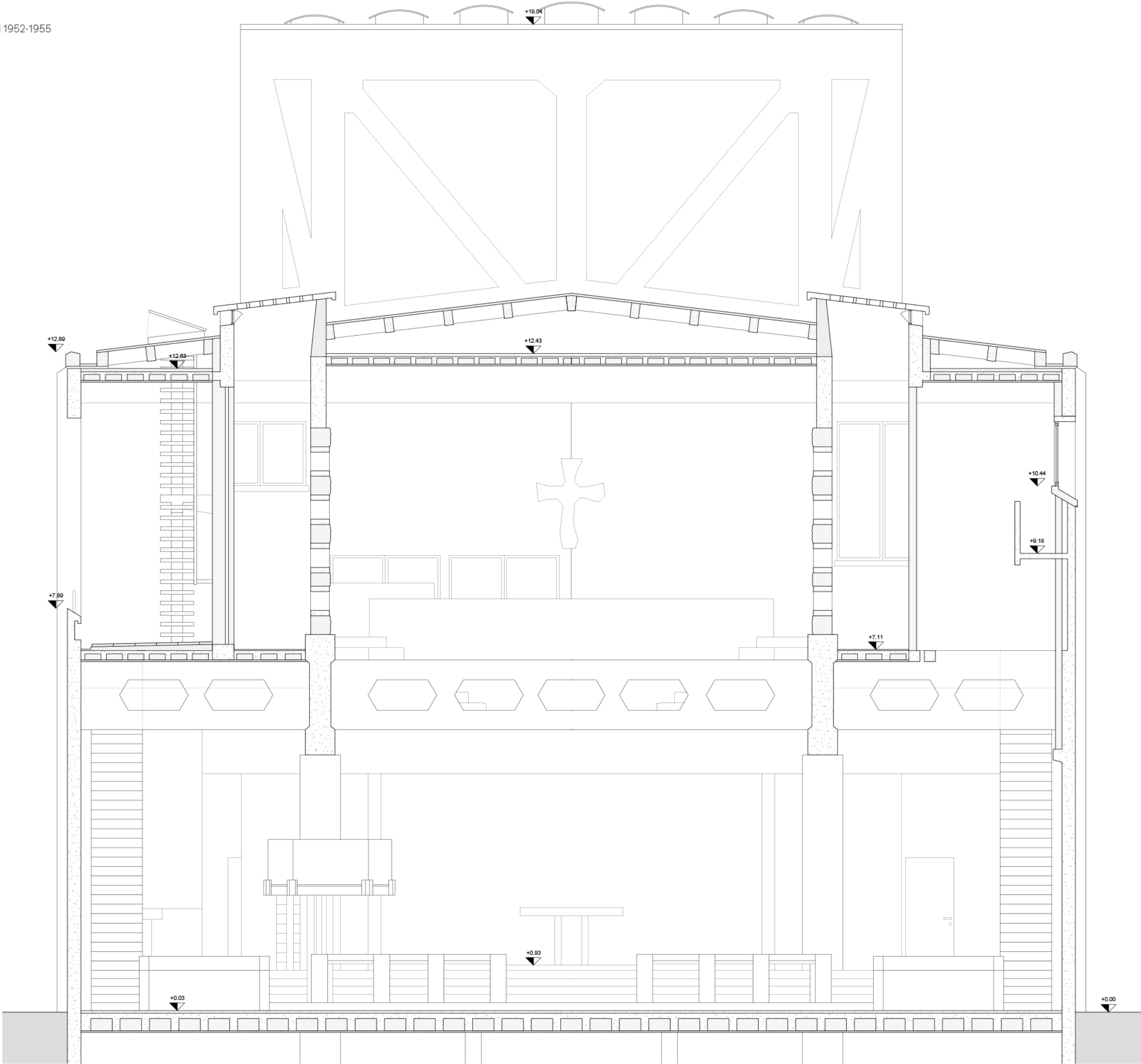
End of construction works

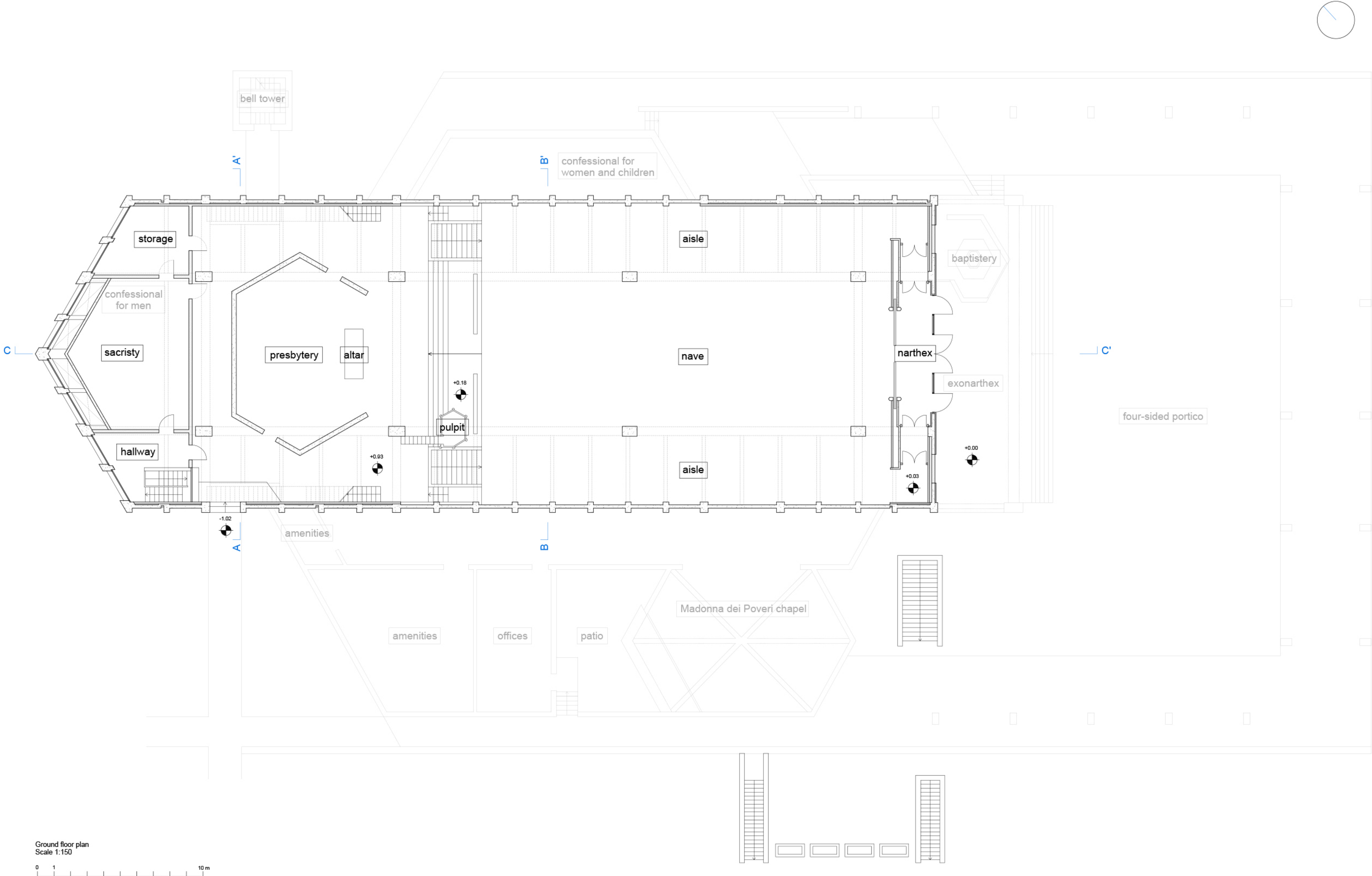
1955 (the church is inaugurated)

Construction system

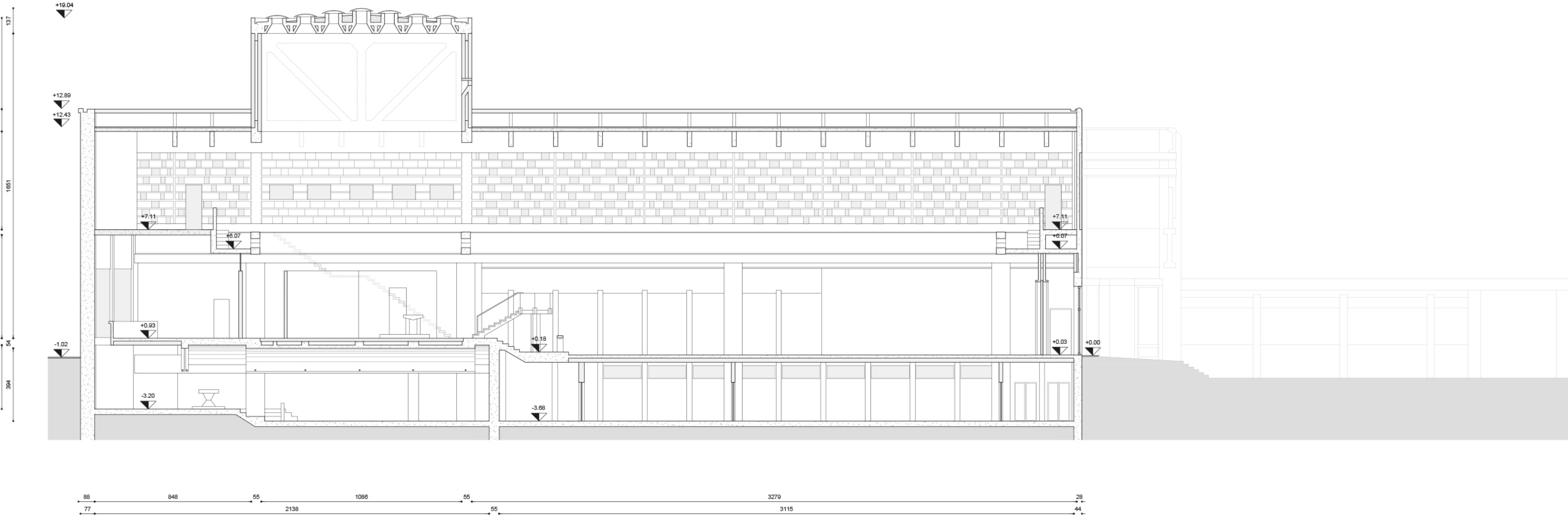
Reinforced concrete post-and-beam system

BB' cross section
Scale 1:50





Ground floor plan
Scale 1:150



CC' longitudinal section

Scale 1:150



