

Atlas of Details



Melchiorre Bega. Torre Galfa 1956-1960

Author(s): Marco Cau, Vincenzo Greco

Copyright: © 2023 The Formwork

URL: <https://www.detailsinsection.org/projects/torre-galfa>

All rights reserved. No part of this publication may be reproduced, distributed, or transmitted in any form or by any means, including photocopying, recording, or other electronic or mechanical methods, without the prior permission of the publisher. For permission requests regarding the partial or total reproduction of this item, write to the editor at the address below.

Please note: printing of this item for personal, noncommercial use is permitted. The graphic materials contained here have been produced for an optimised screen visualisation. For a good quality print, original full bleed sheet format (A2 horizontal) are to be maintained; inkjet plotting on opaque coated paper should be preferred.

Atlas of Details is a research project to demonstrate how insightful a section can be, in order to represent the complexity of the architectural artifact, since it allows the simultaneous perception of materiality and form, of building envelope and interior spaces. Atlas of Details is a project by The Formwork, an association established by professors and PhD candidates with diverse academic backgrounds (history, architectural design, technology, preservation) working at the IUAV University in Venice and at the Milan Politecnico. For more information about the Atlas of Details and The Formwork, please contact info@theformwork.org.

The Formwork

Cultural association

Cannaregio 638,

30121 Venezia (VE)

<https://www.theformwork.org>

<https://www.detailsinsection.org>

info@theformwork.org

Melchiorre Bega

Torre Galfa

1956-1959

Text

Vincenzo Greco
IUAV Venezia

Drawings

Vincenzo Greco
Marco Cau
IUAV Venezia

Architect

Melchiorre Bega (1898-1976)

Name of the building

Torre Galfa

Site

Via Gustavo Fara, via Luigi Galvani, Milan (IT)

Client

Galfa Immobiliare, SAROM, BP

Contractors

Sogene

Engineer

Arturo Danusso (1880-1968), Pier Antonio Papini, Antonio Rognoni, Luigi Antonietti (1924-2010)

Other actors

ISMES (realization of structural models);
Engineers Gianfelice Bortolini e Gaetano Altieri (curators of plant equipment);
Engineers Pietro Giulio Bosisio (static test);
Engineers Giuseppe Casalis (construction manager);
Fratelli Greppi (design and implementation of facades);
Knoll international (office furniture).

Building permit

1955: first project variant;
1956 march: first variation project;
1956 july: issuance of building permit.

Start of construction works

1956 october: start of work.

Intermediate stages

1958 august: second project variant.

End of construction works

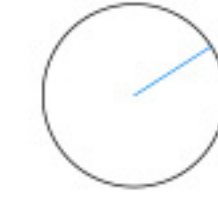
1959 january: official end of works;
1960 april 27: inauguration of the skyscraper.

Construction system

The Galfa Tower features a completely innovative construction system compared to the structural systems of the period. Its entire organism rises from a slab foundation within which oriented reinforced concrete masonry partitions are grafted, directed on the normal to the long side, with the function of absorbing all the loads bearing on the cantilevered floors, made of laterocement, that make up the entire building. An additional element that cooperates with the rest of the structural system is the elevator block.

The envelope of the entire volume is made of curtainwall, with black and white anodized steel profiles. The black-colored mullions help to further amplify the slenderness of the tower, generating an optical effect from those viewing it from below. The internal partitions, where provided, are made of transparent crystal or wooden movable walls to provide more privacy.

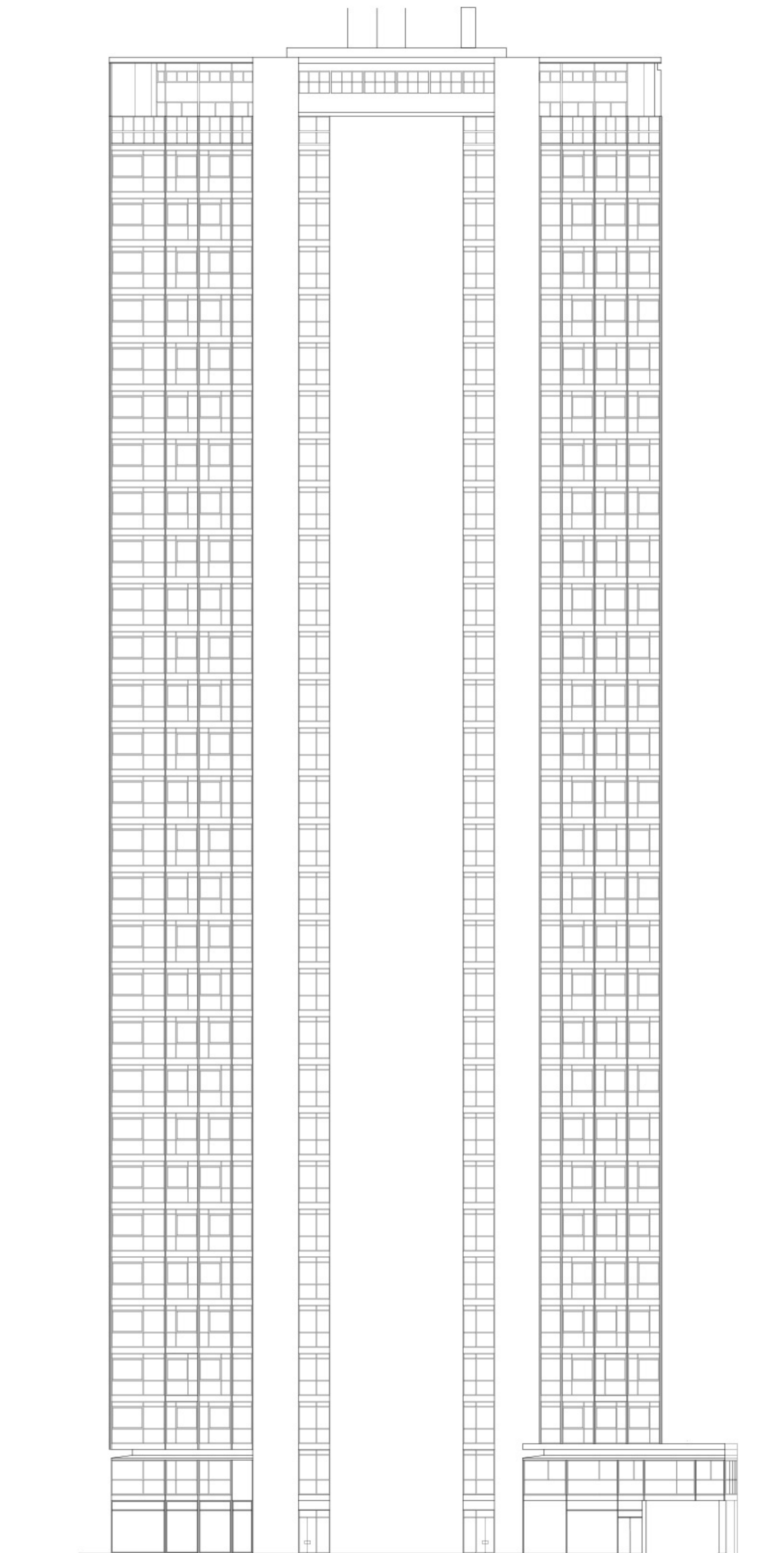
Via Alfredo Campanini



Ground floor plan
Scale 1:200

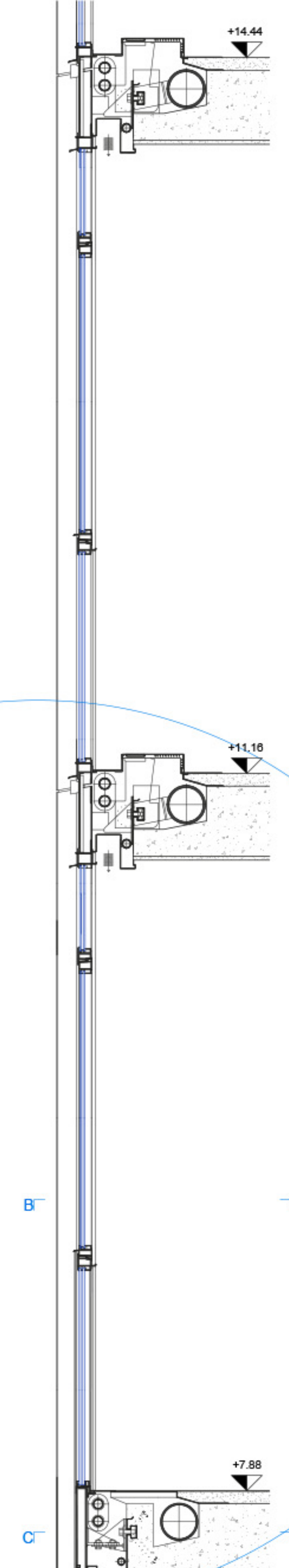
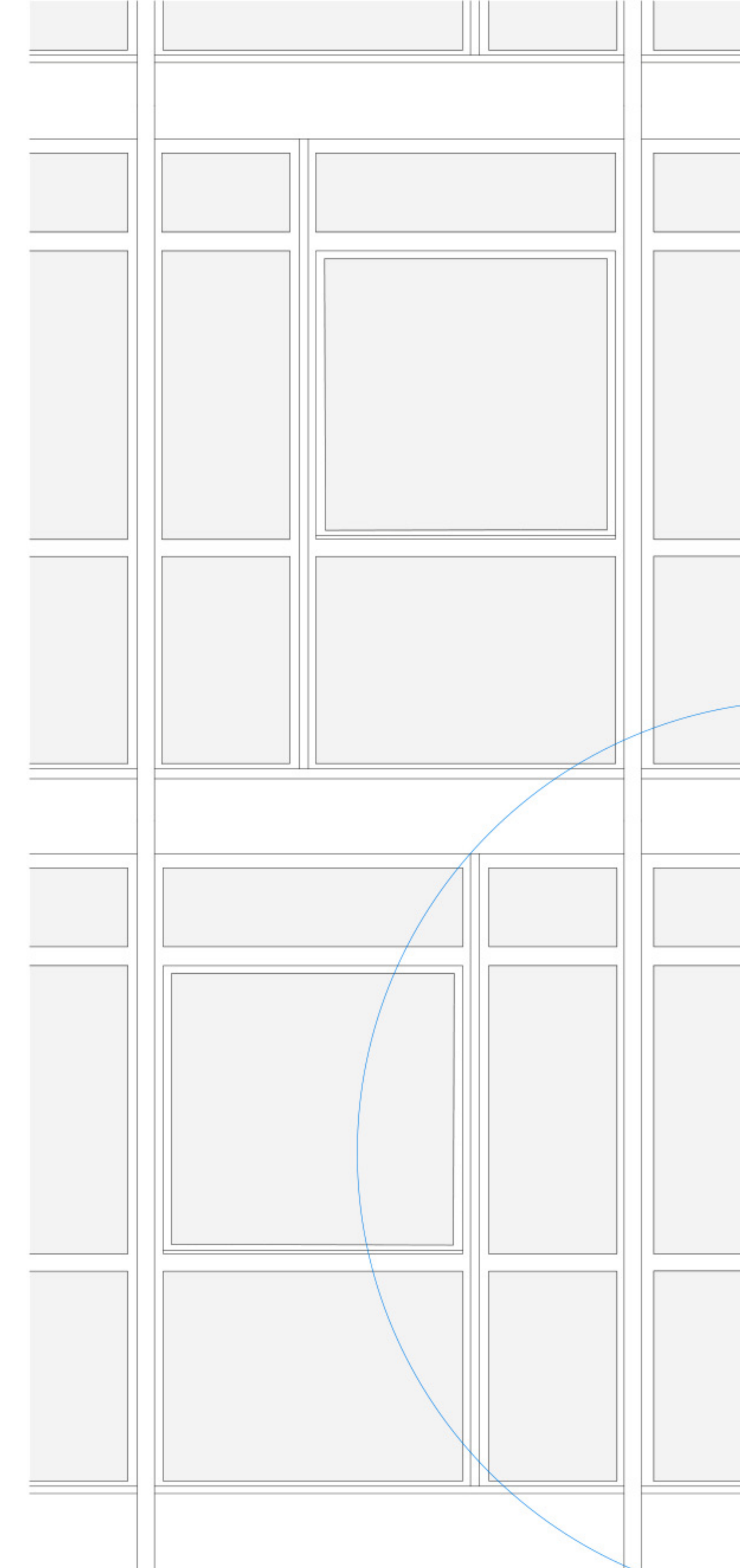
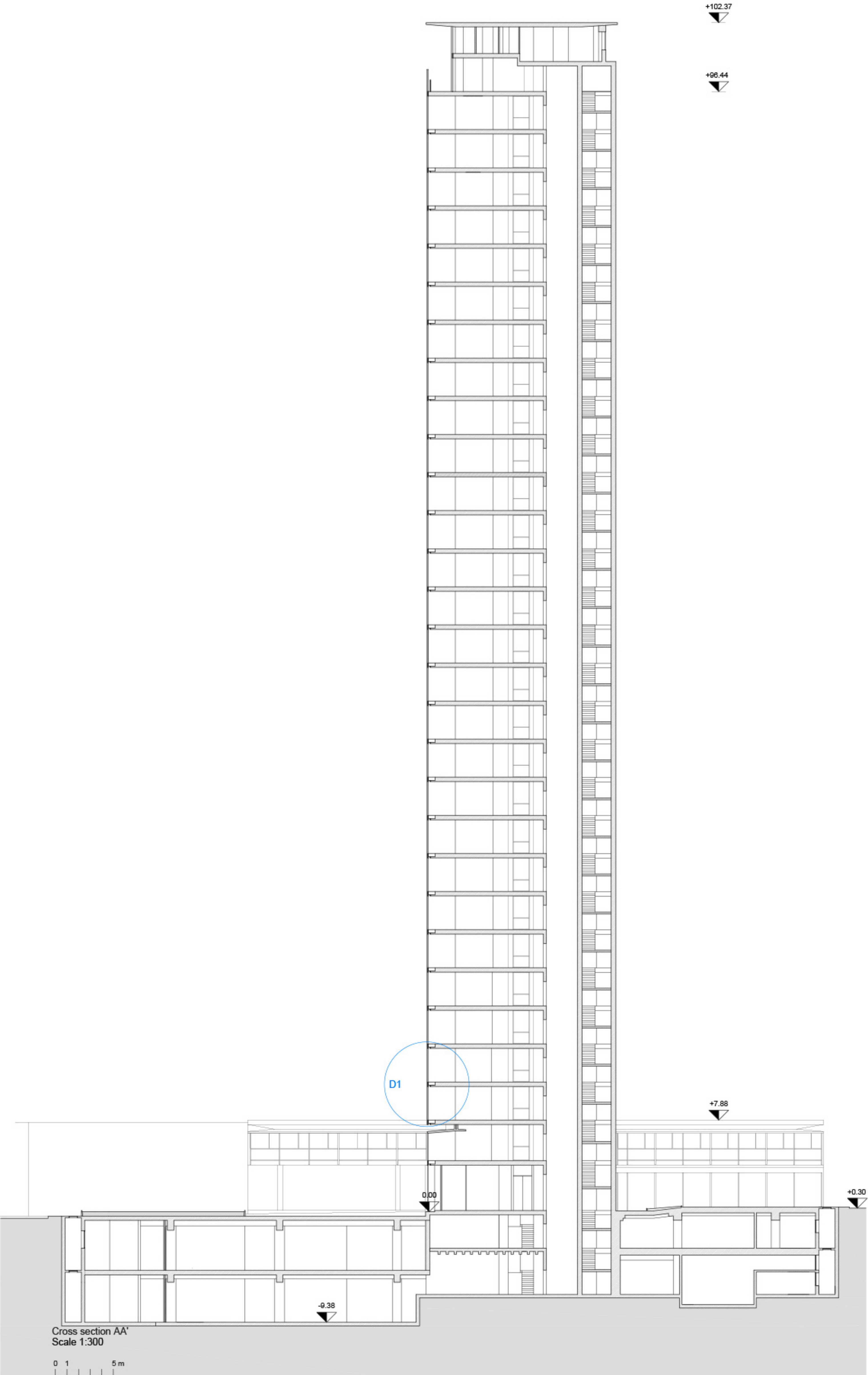
0 1 5m

Via Luigi Galvani

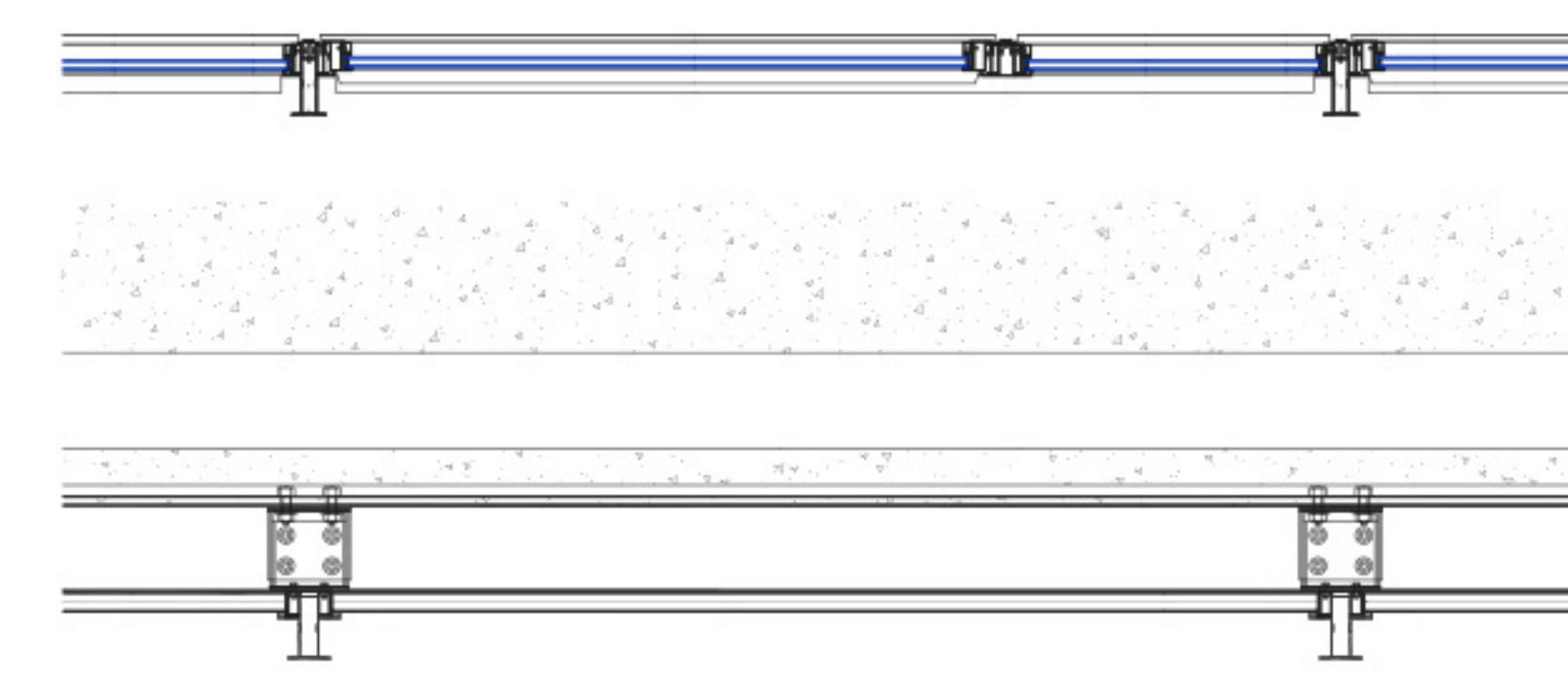


Elevation on via Campanini
Scale 1:300

0 1 5m

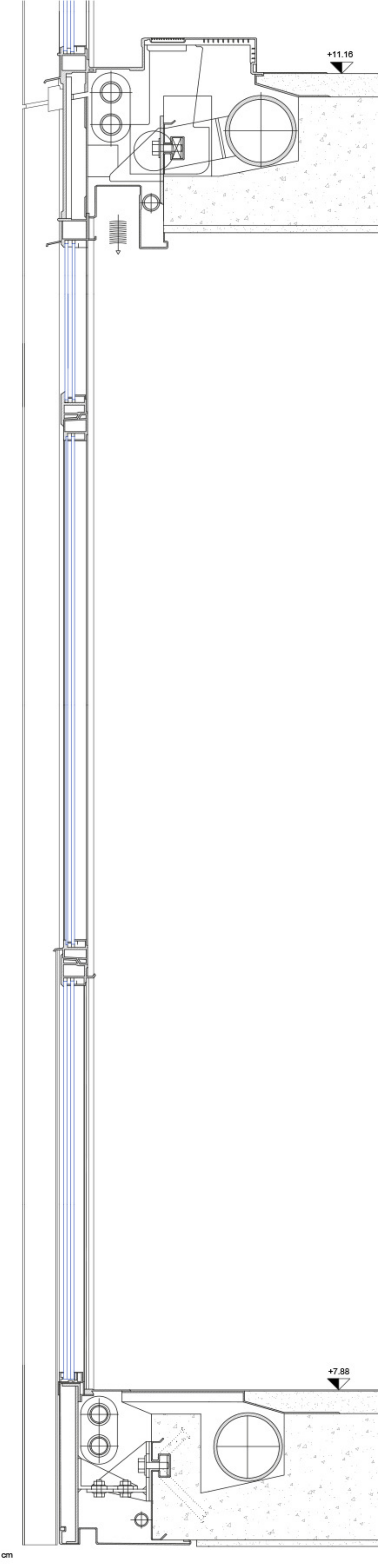


Horizontal section BB'



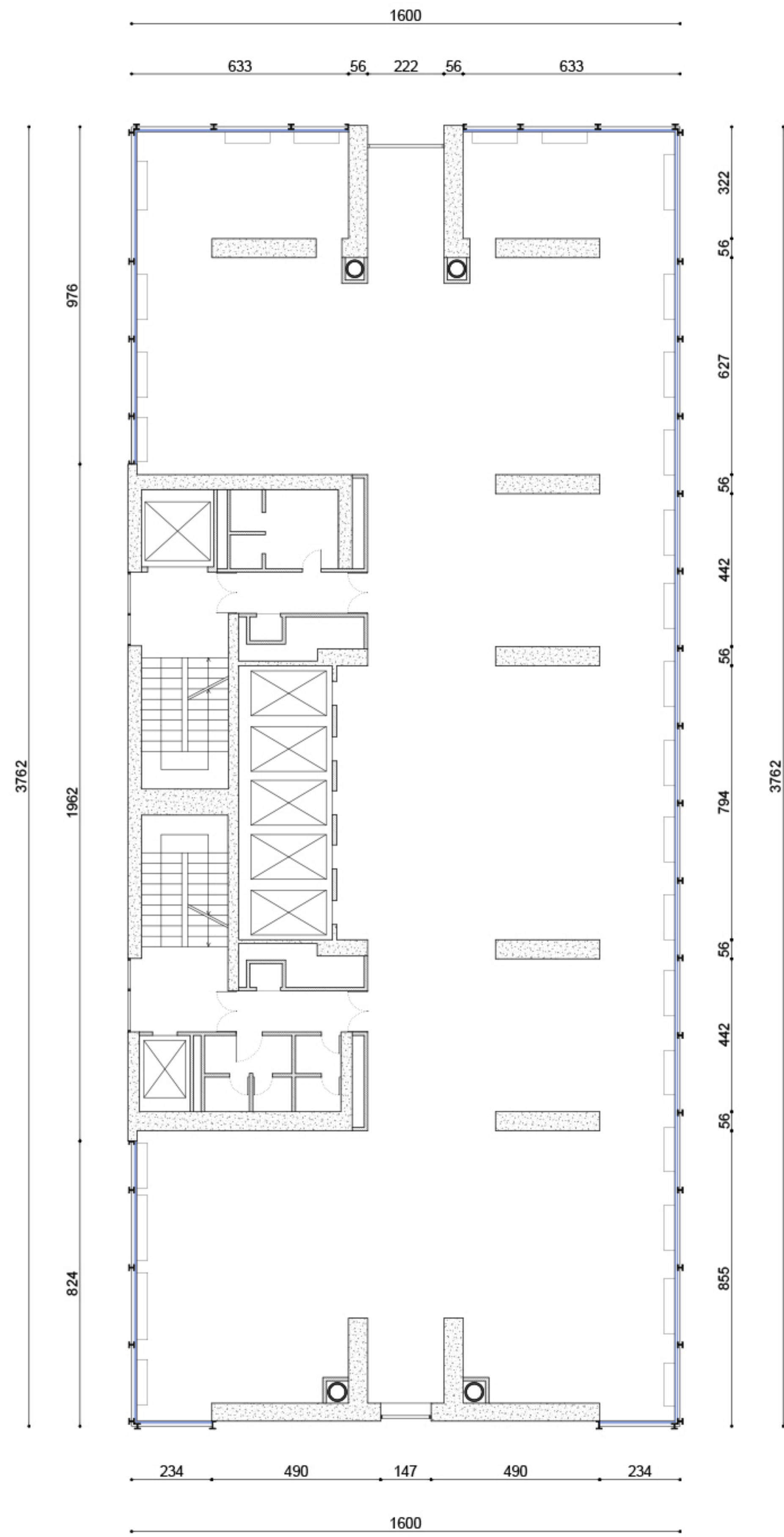
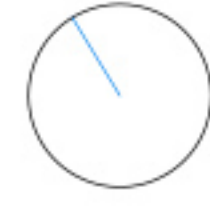
D1 detail section
Scale 1:25

0 1 2 m



D2 curtainwall detail
Scale 1:10

0 1 50 cm



Type floor plan
Scale 1:150



Elevations on via Fara and via Galvani
Scale 1:300

