

# Atlas of Details



## Giuseppe Samonà. Nucleo sperimentale di Borgo Ulivia 1956-1961

Author(s): Isabella Verrone

Copyright: © 2023 The Formwork

URL: <https://www.detailsinsection.org/archives/projects/nucleo-sperimentale-di-bor-go-ulivia>

---

All rights reserved. No part of this publication may be reproduced, distributed, or transmitted in any form or by any means, including photocopying, recording, or other electronic or mechanical methods, without the prior permission of the publisher. For permission requests regarding the partial or total reproduction of this item, write to the editor at the address below.

Please note: printing of this item for personal, noncommercial use is permitted. The graphic materials contained here have been produced for an optimised screen visualisation. For a good quality print, original full bleed sheet format (A2 horizontal) are to be maintained; inkjet plotting on opaque coated paper should be preferred.

Atlas of Details is a research project to demonstrate how insightful a section can be, in order to represent the complexity of the architectural artifact, since it allows the simultaneous perception of materiality and form, of building envelope and interior spaces. Atlas of Details is a project by The Formwork, an association established by professors and PhD candidates with diverse academic backgrounds (history, architectural design, technology, preservation) working at the IUAV University in Venice and at the Milan Politecnico. For more information about the Atlas of Details and The Formwork, please contact [info@theformwork.org](mailto:info@theformwork.org).

### The Formwork

Cultural association

Cannaregio 638,

30121 Venezia (VE)

<https://www.theformwork.org/staging>

<https://www.detailsinsection.org/staging>

[info@theformwork.org](mailto:info@theformwork.org)

# Giuseppe Samonà

## Nucleo sperimentale di Borgo Ulivia

1956-1961

**Text**

Isabella Verrone  
IUAV Venezia

**Drawings**

Isabella Verrone  
IUAV Venezia

**Architect**

Giuseppe Samonà

**Name of the building**

*Nucleo Sperimentale di Borgo Ulivia*

**Site**

Palermo, Italy

**Client**

*Comitato Nazionale per la Produttività*

**Contractors**

Ezio Tosi s.p.a.

**Other actors**

A. Bonafede, R. Calandra, E. Caracciolo

**Start of construction works**

1956

**End of construction works**

1961

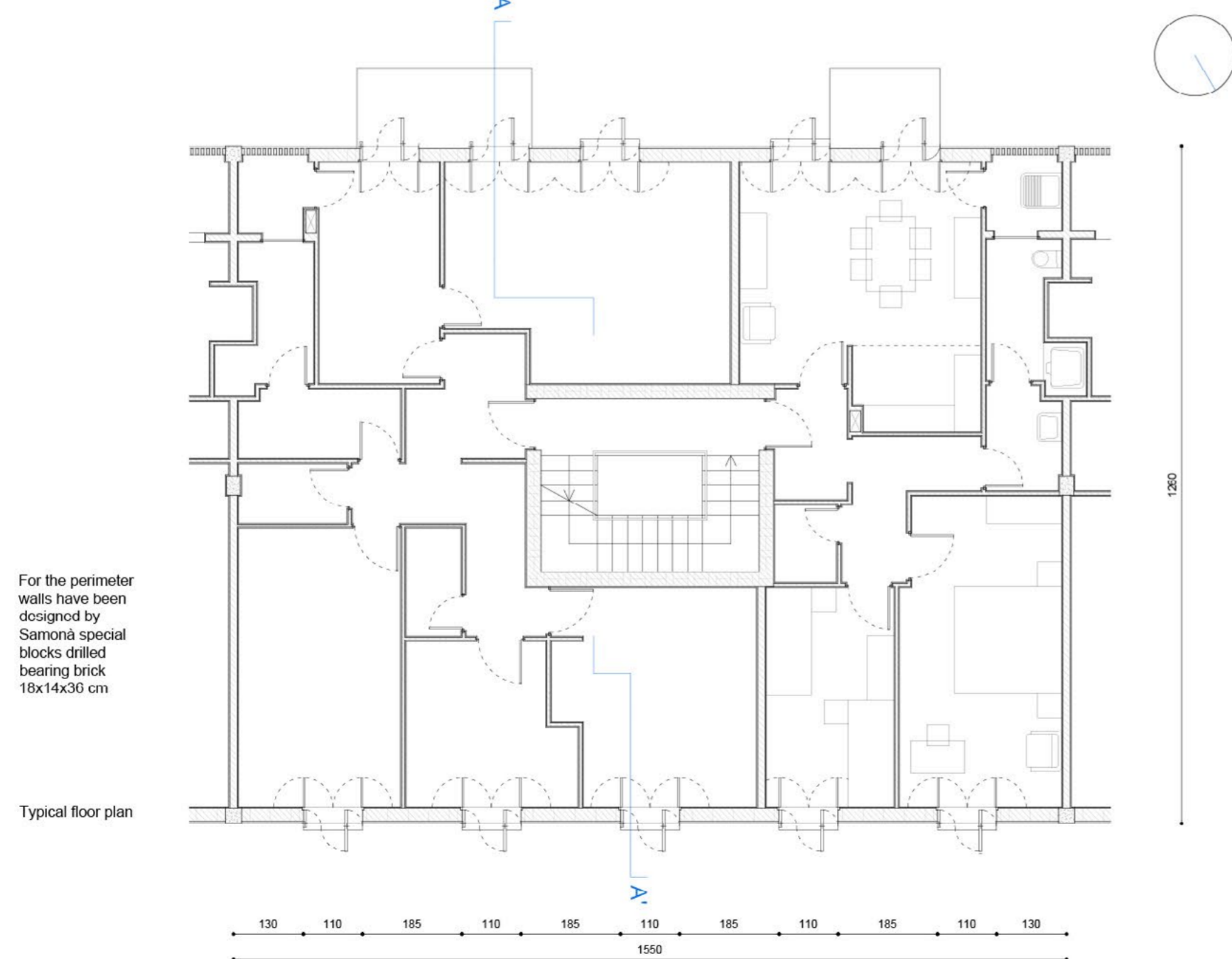
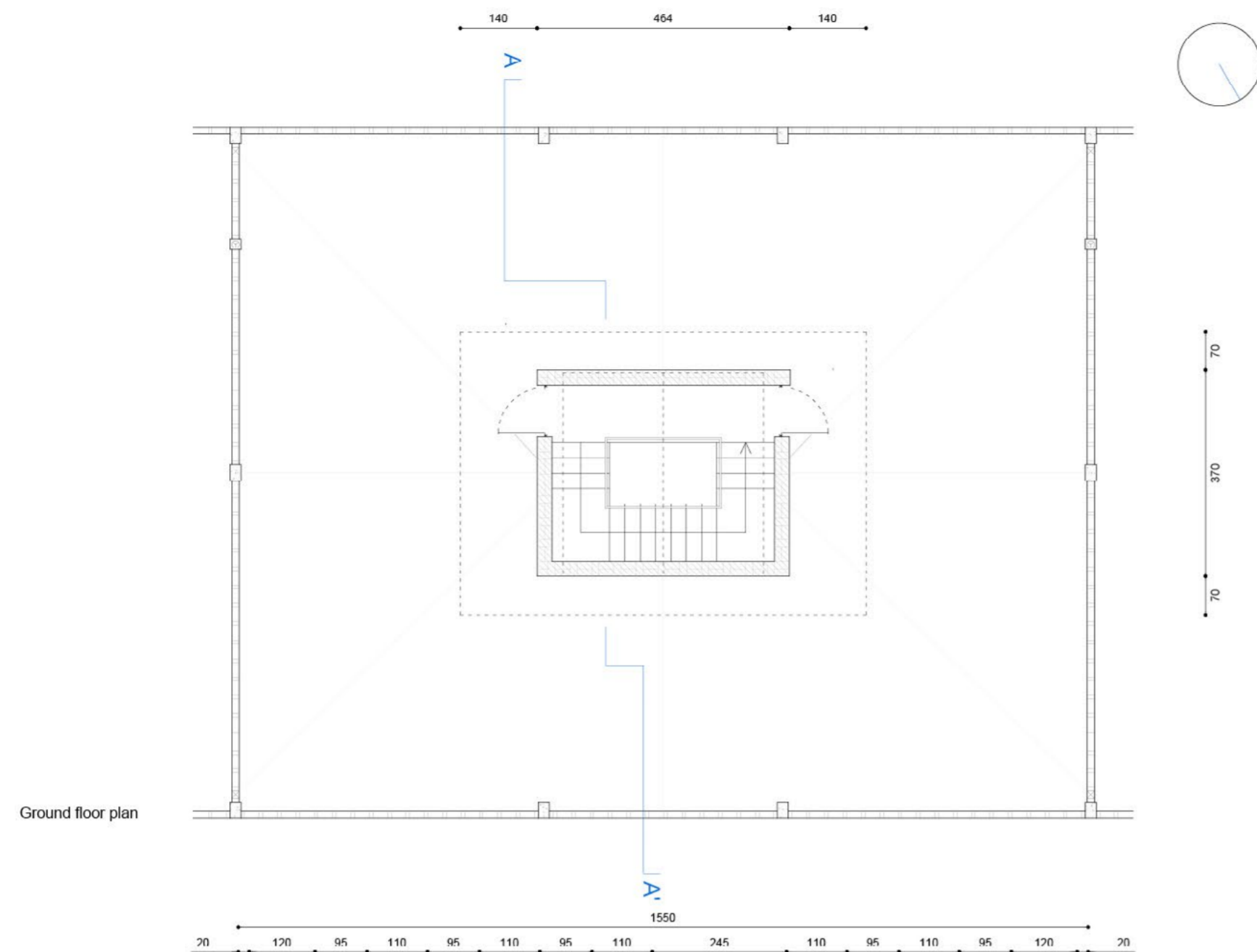
**Construction system**

Reinforced concrete frames, perimeter walls in perforated blocks in self-supporting brick, slabs in concrete brick



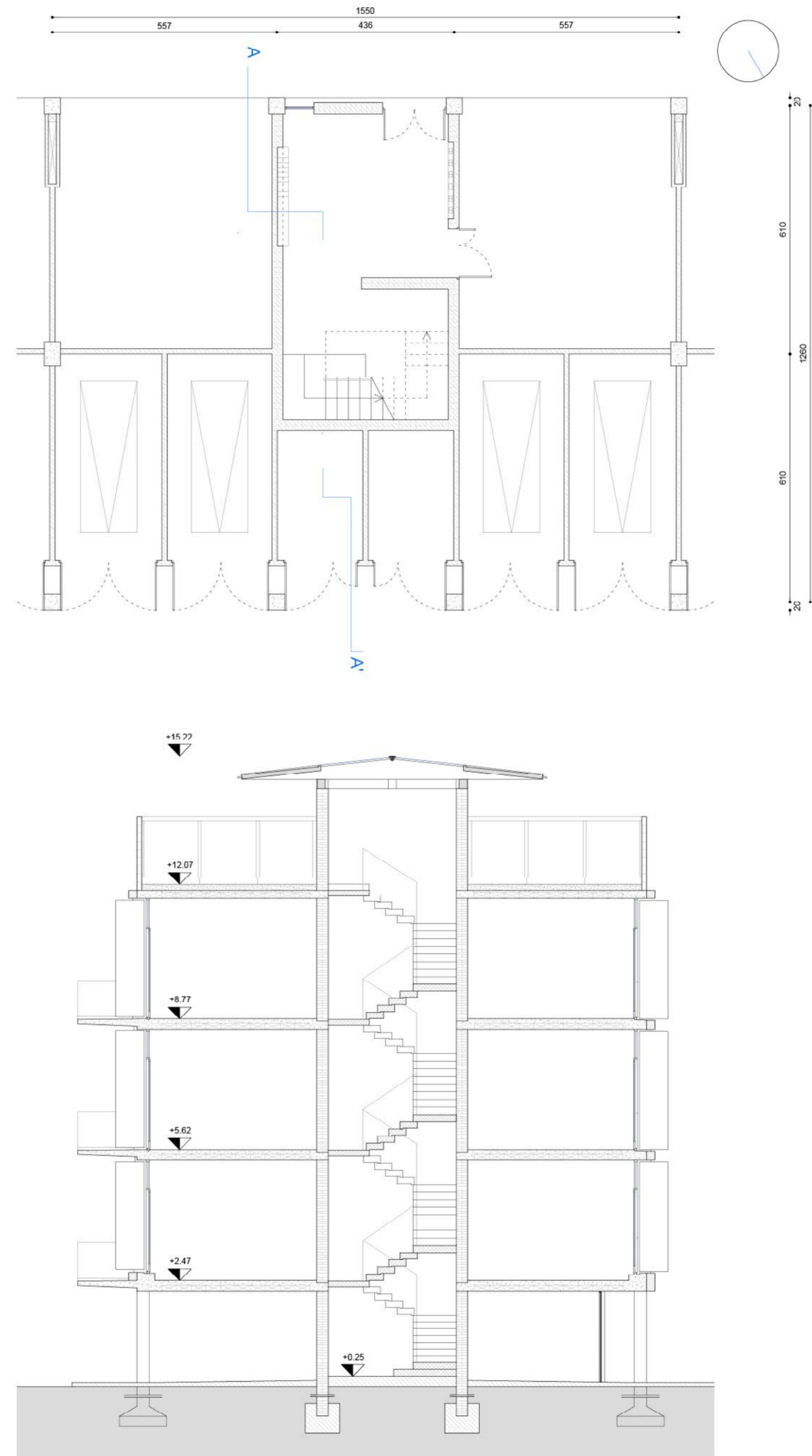
Masterplan  
Scale 1:500

0 5 50



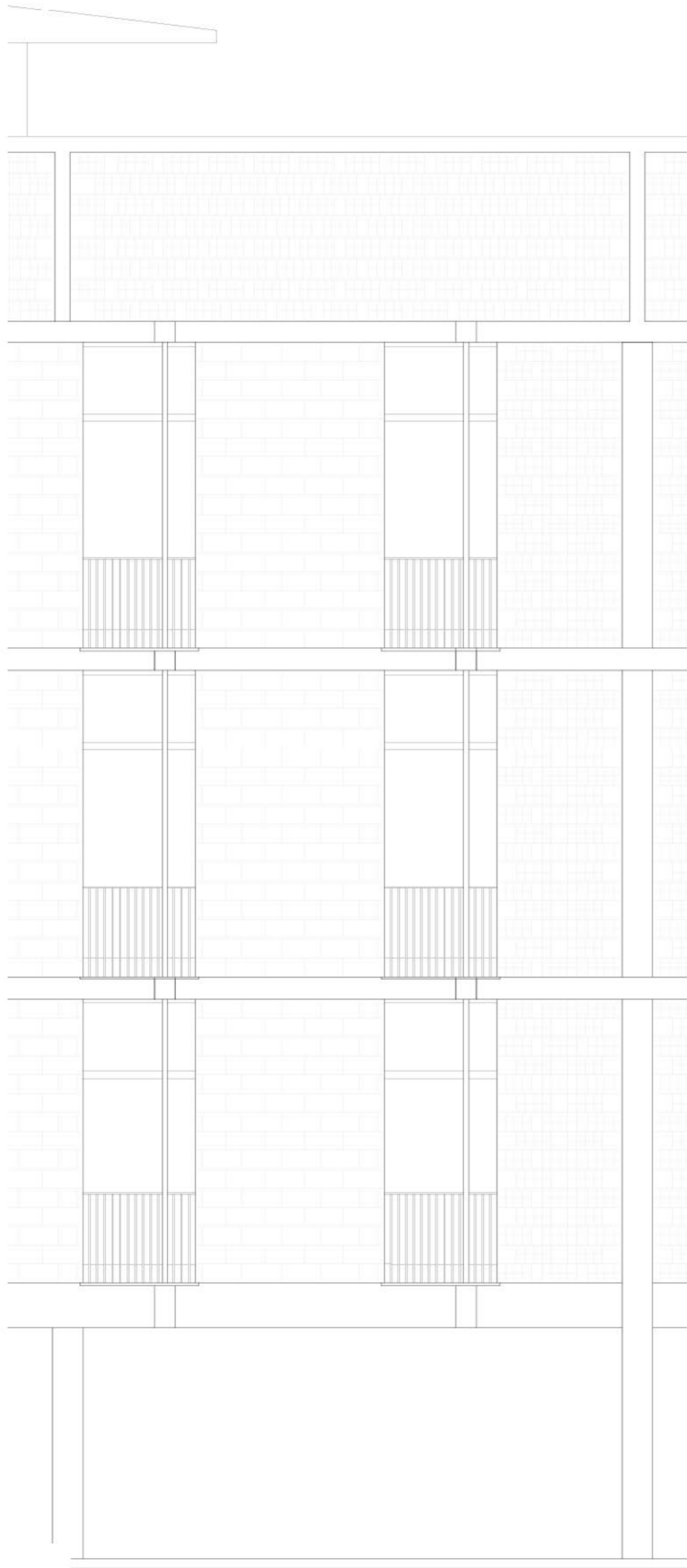
For the perimeter walls have been designed by Samoná special blocks drilled bearing brick 18x14x30 cm

Section AA'



Plans and sections  
Scale 1:100





Elevation

Scale 1:50



Section AA'

