

# Atlas of Details



## **Carlo Mollino. Stazione della slittovia al Lago Nero 1946-1947**

Author(s): Emanuele Tibaldo

Copyright: © 2023 The Formwork

URL: <https://www.detailsinsection.org/projects/slittovia-al-lago-nero>

---

All rights reserved. No part of this publication may be reproduced, distributed, or transmitted in any form or by any means, including photocopying, recording, or other electronic or mechanical methods, without the prior permission of the publisher. For permission requests regarding the partial or total reproduction of this item, write to the editor at the address below.

Please note: printing of this item for personal, noncommercial use is permitted. The graphic materials contained here have been produced for an optimised screen visualisation. For a good quality print, original full bleed sheet format (A2 horizontal) are to be maintained; inkjet plotting on opaque coated paper should be preferred.

Atlas of Details is a research project to demonstrate how insightful a section can be, in order to represent the complexity of the architectural artifact, since it allows the simultaneous perception of materiality and form, of building envelope and interior spaces. Atlas of Details is a project by The Formwork, an association established by professors and PhD candidates with diverse academic backgrounds (history, architectural design, technology, preservation) working at the IUAV University in Venice and at the Milan Politecnico. For more information about the Atlas of Details and The Formwork, please contact [info@theformwork.org](mailto:info@theformwork.org).

### **The Formwork**

Cultural association

Cannaregio 638,

30121 Venezia (VE)

<https://www.theformwork.org>

<https://www.detailsinsection.org>

[info@theformwork.org](mailto:info@theformwork.org)

# **Carlo Mollino**

## **Stazione della slittovia al Lago Nero**

1946-1947

### Text

Emanuele Tibaldo  
IUAV Venezia

### Drawings

Emanuele Tibaldo  
IUAV Venezia

### Architect

Carlo Mollino (1905-1973)

### Name of the building

*Stazione della slittovia al Lago Nero*

### Site

Strada dell'Assietta, Sauze d'Oulx, Turin (IT);

### Client

*C.L.O.T.E.S. - Industrie Turistico Alberghiere, Piero Dusio*

### Contractors

Sideberton

### Engineer

Ferdinando Galdini e Pagani

### Other actors

Carlo Albero Bordogna (1913-1998) (designer and collaborator);  
Barbier (geometer);  
Segheria di Moncalieri (construction of woodwork).

### Building permit

1945: release of the building permit

### Start of construction works

1946 july : start of construction works

### Projects variations

After delivering an initial "municipal project" in june 1946, Mollino revised the roof and terrace, continuing his research. On the valley side, the roof became more traditional, acquiring the form of the typical double pitch, later the upward sloping pitch on the north side was also eliminated, as can be seen in the later drawings, in which the idea of the 'glass-window' is also taken up.

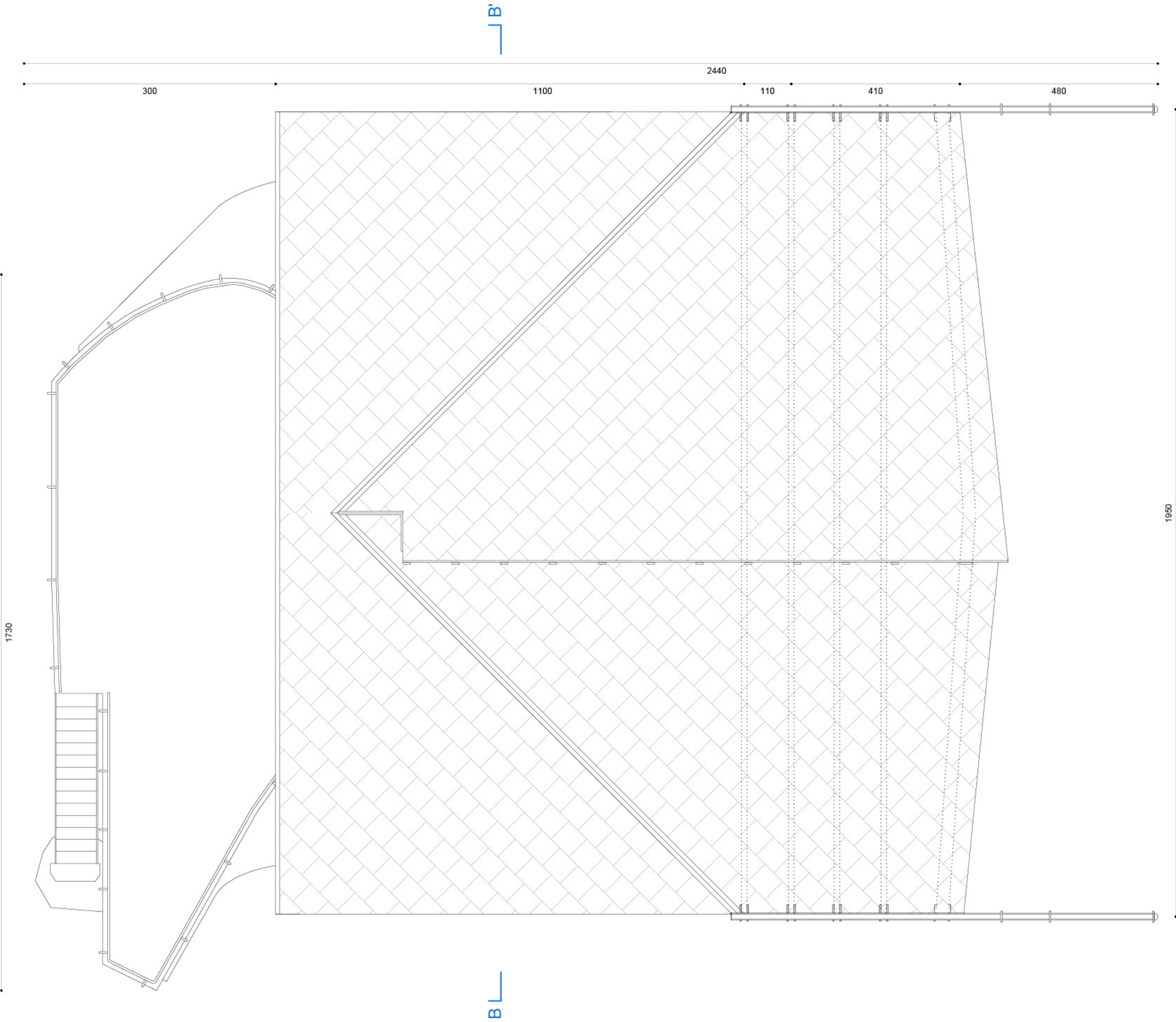
Three weeks after this 'municipal project', Mollino finished drafting an 'executive' solution, the drawings are dated 9 july 1946.

### End of construction works

1947 in the middle: official end of works

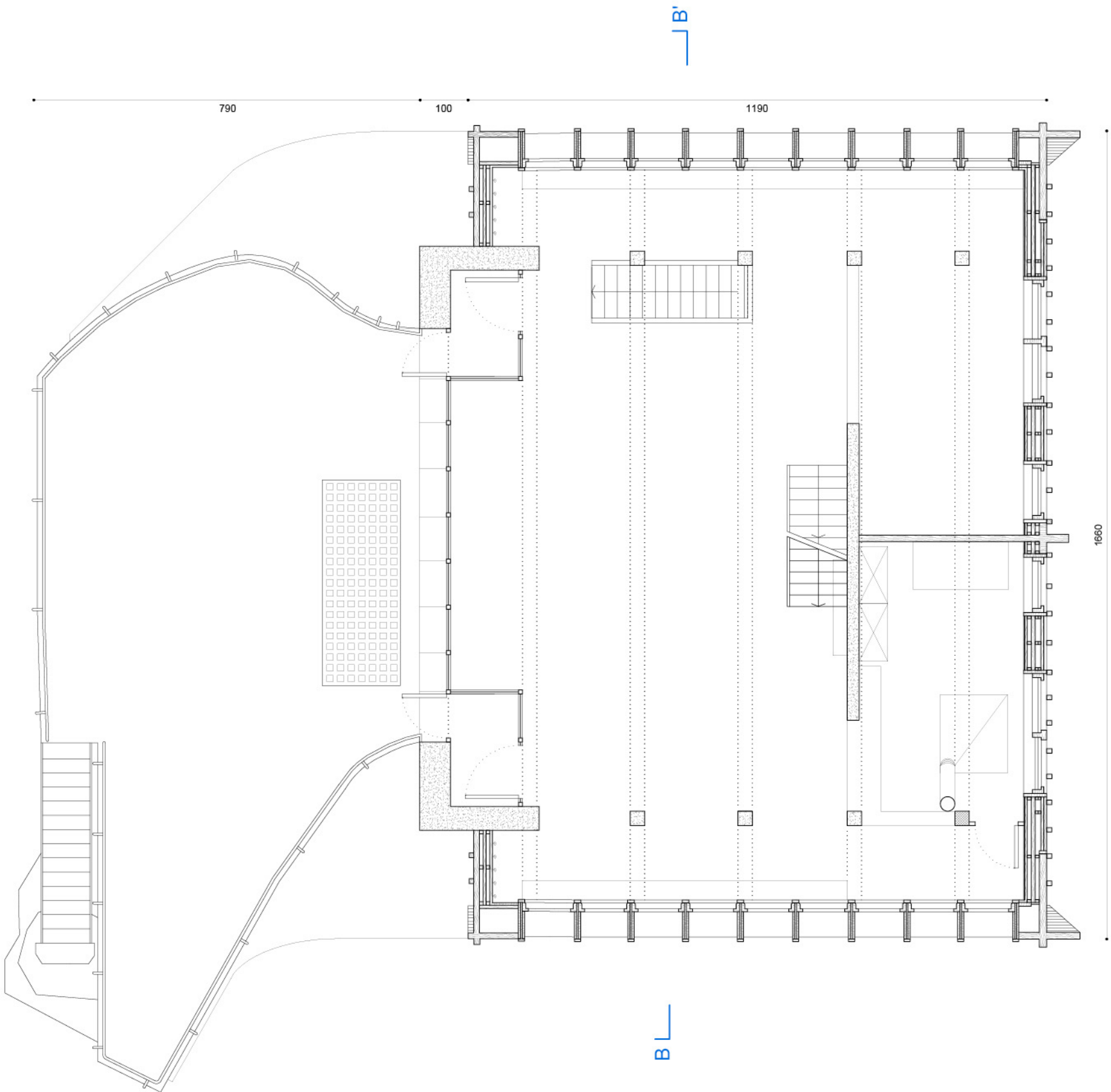
### Construction system

The structure consists of reinforced concrete pillars and load-bearing partitions. The floors of the ground floor and the basement are made of reinforced concrete, while the floors of the restaurant and bar floor and the attic are made of wood structure. The exterior parts on the ground floor are entirely plastered, while the upper floors are clad in wood.

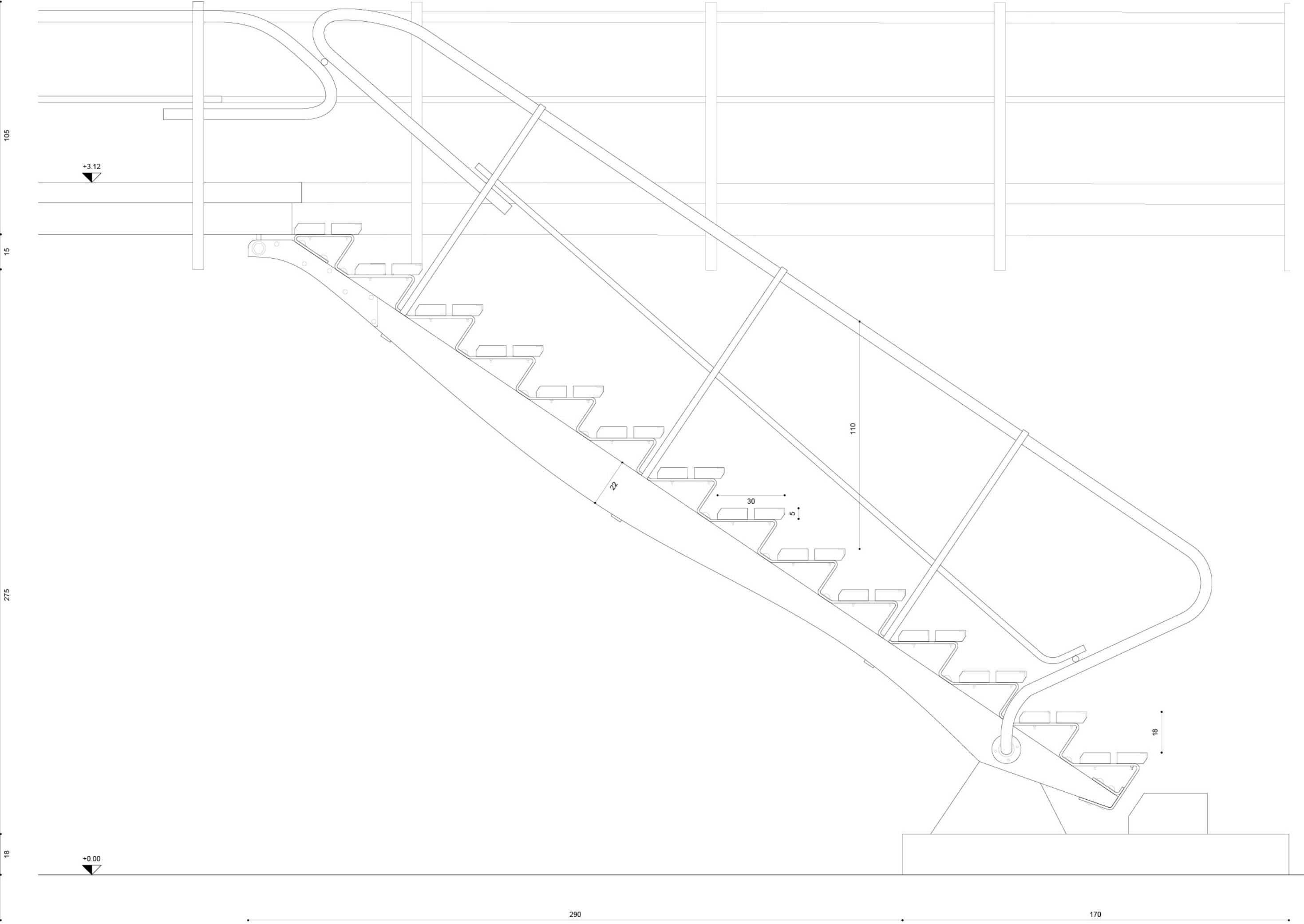


Roof plan  
Scale 1:100

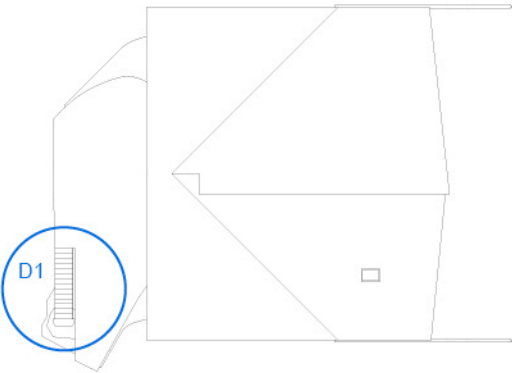
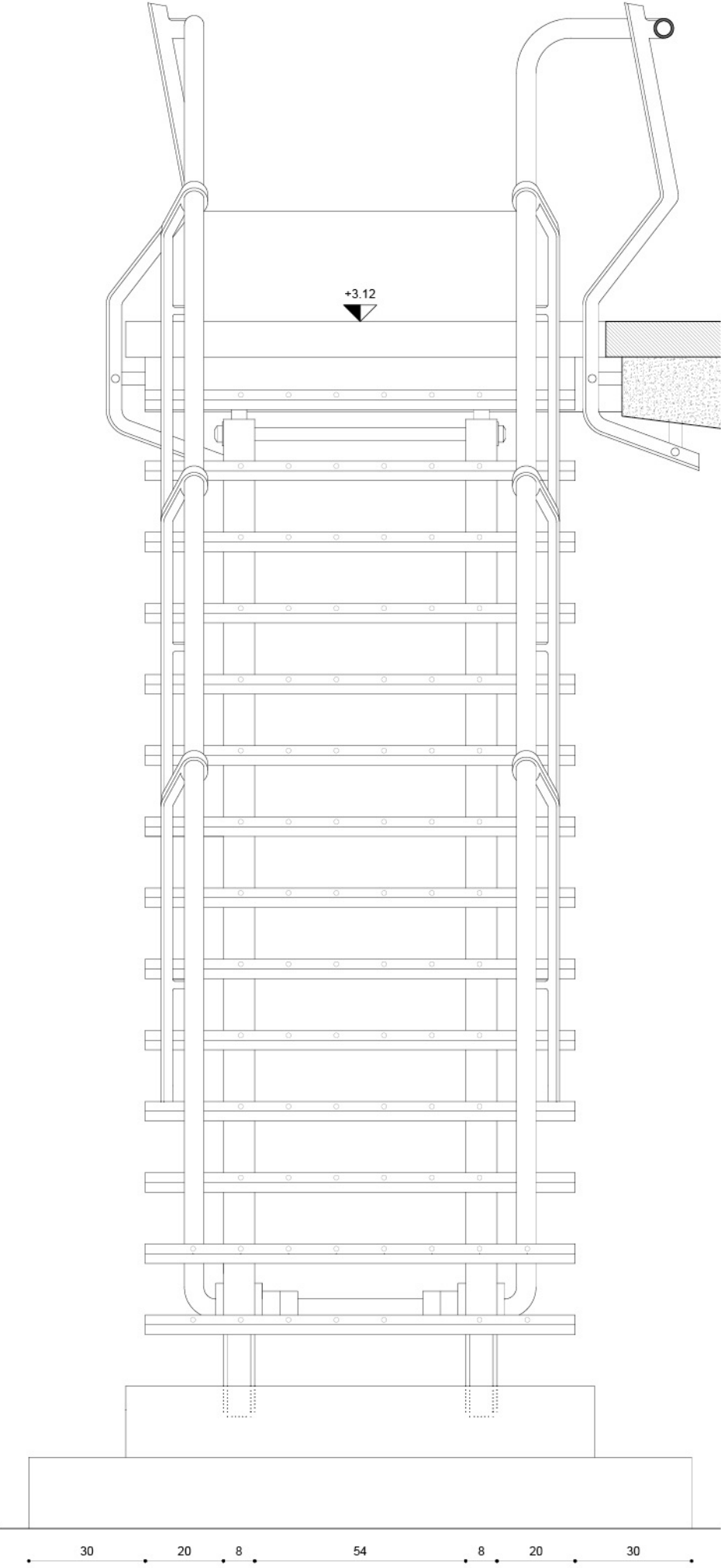
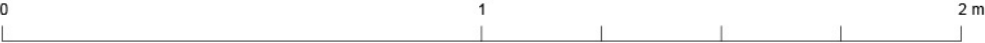
0 1 5 m



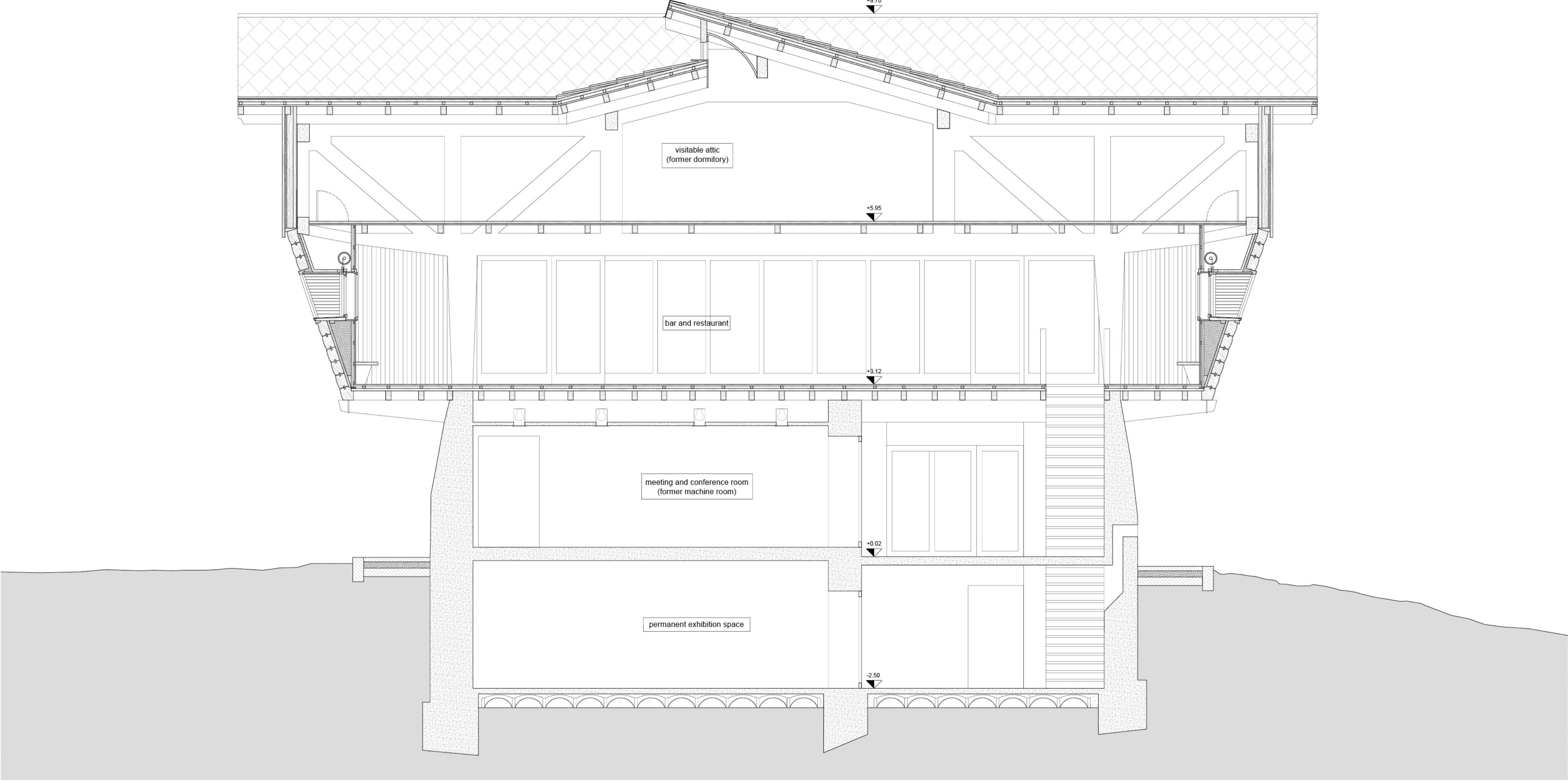
First floor plan  
Scale 1:100



Side elevation and front access stairway  
Scale 1:15



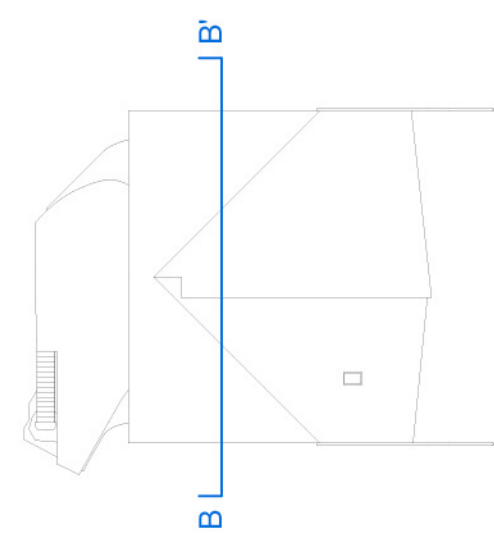




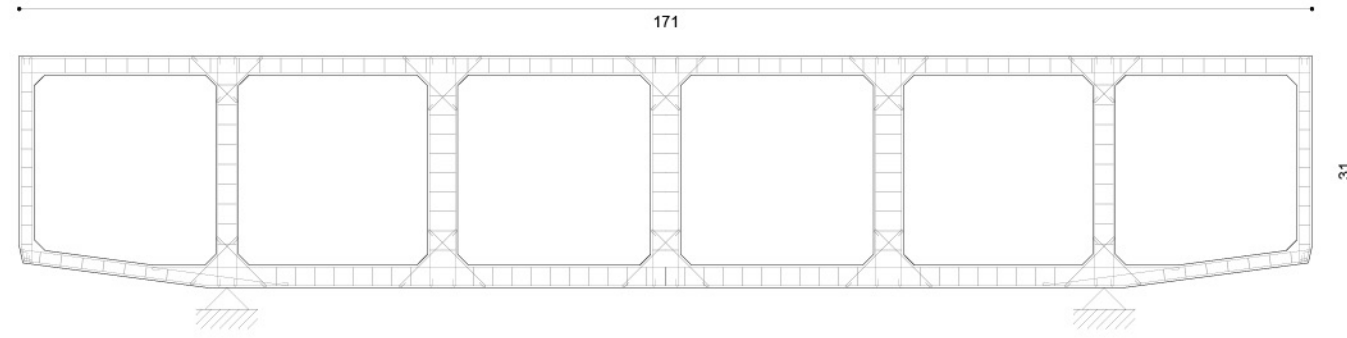
640 330 110

Longitudinal section BB'  
Scale 1:50

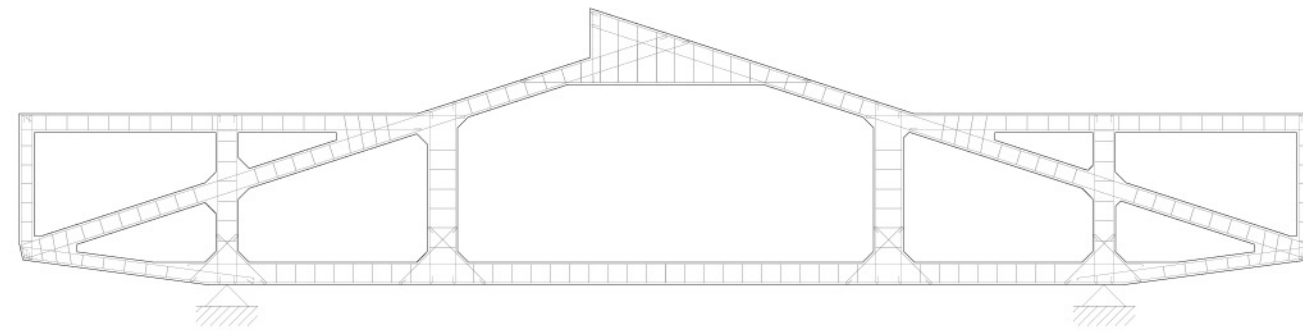
0 1 5 m



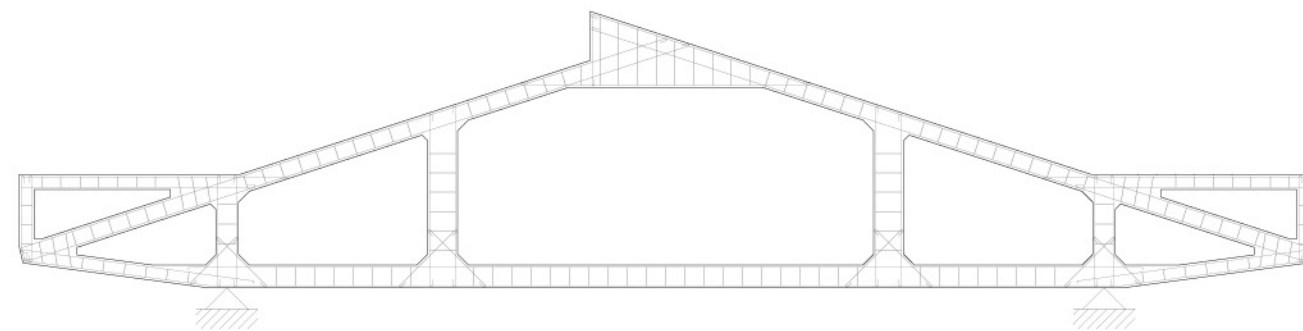
A



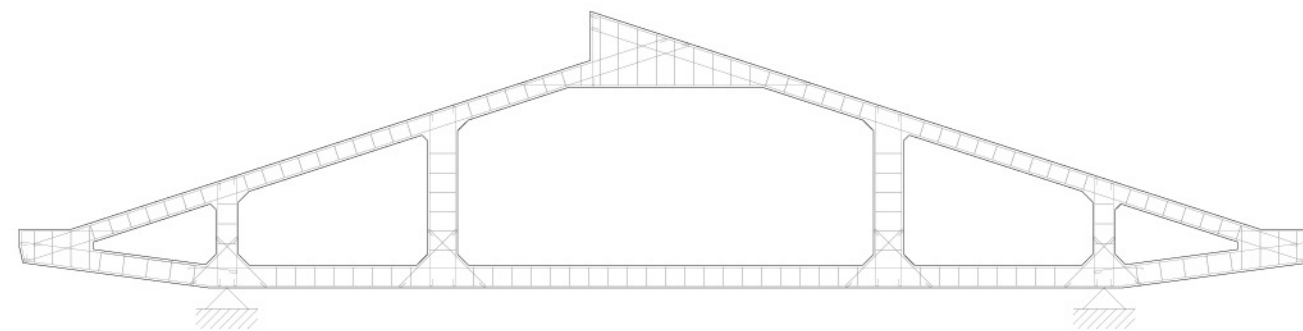
B



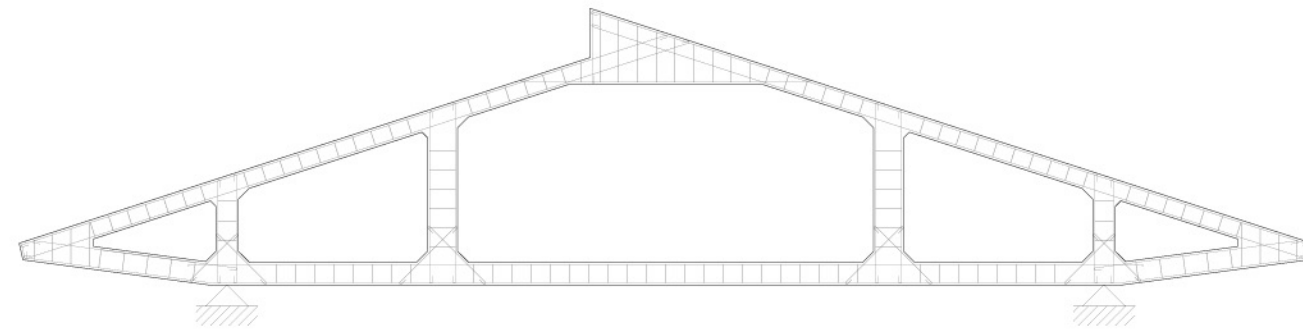
C



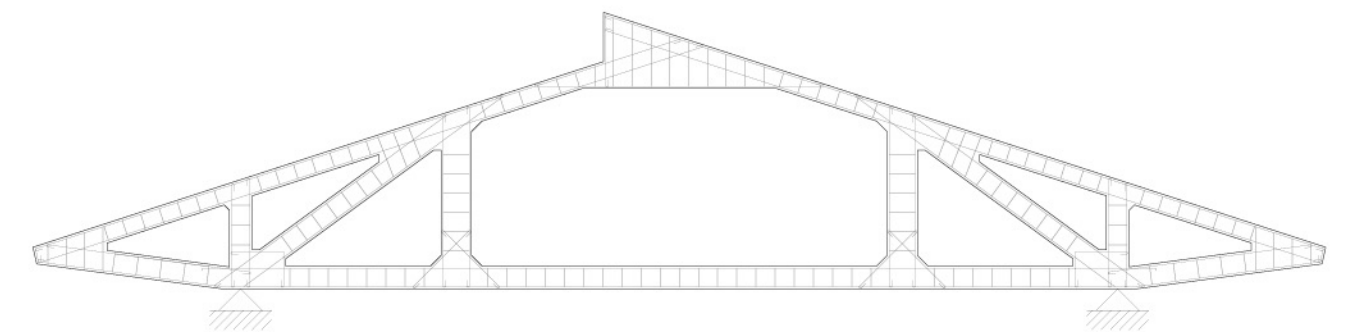
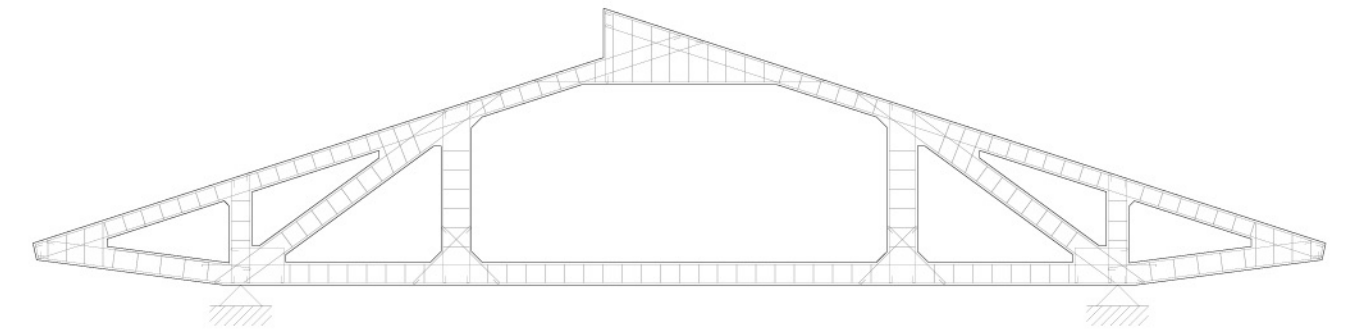
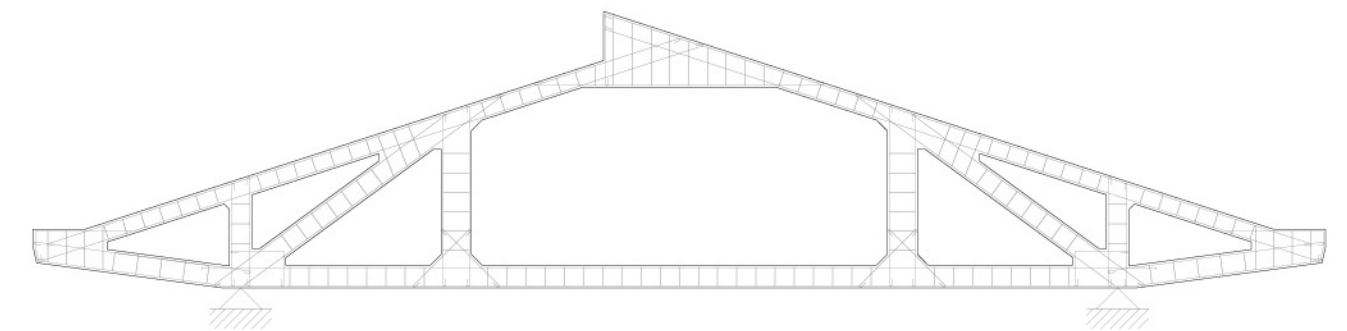
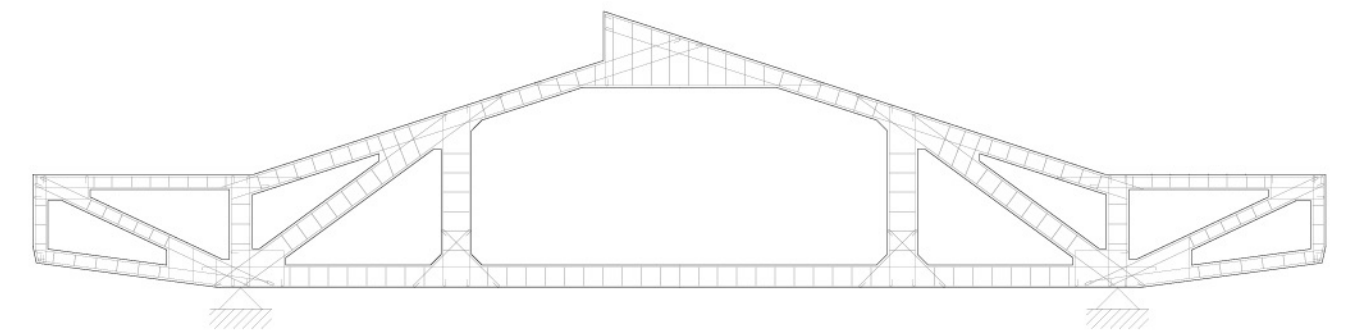
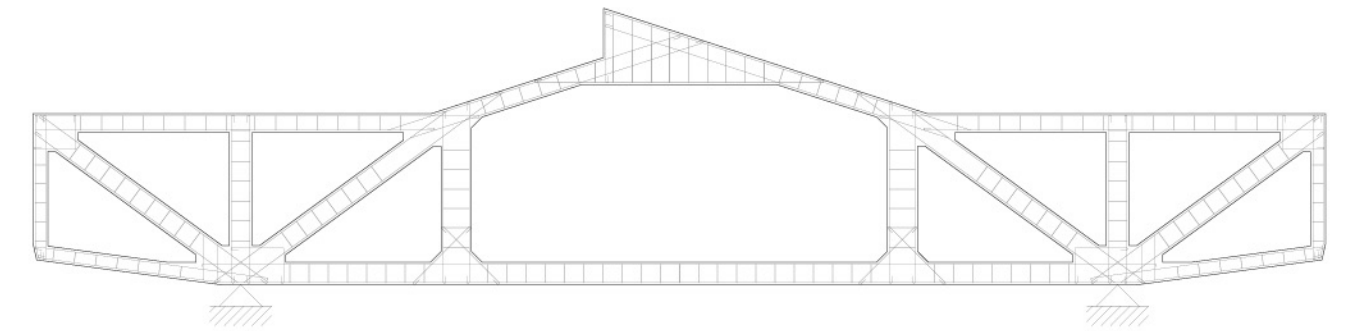
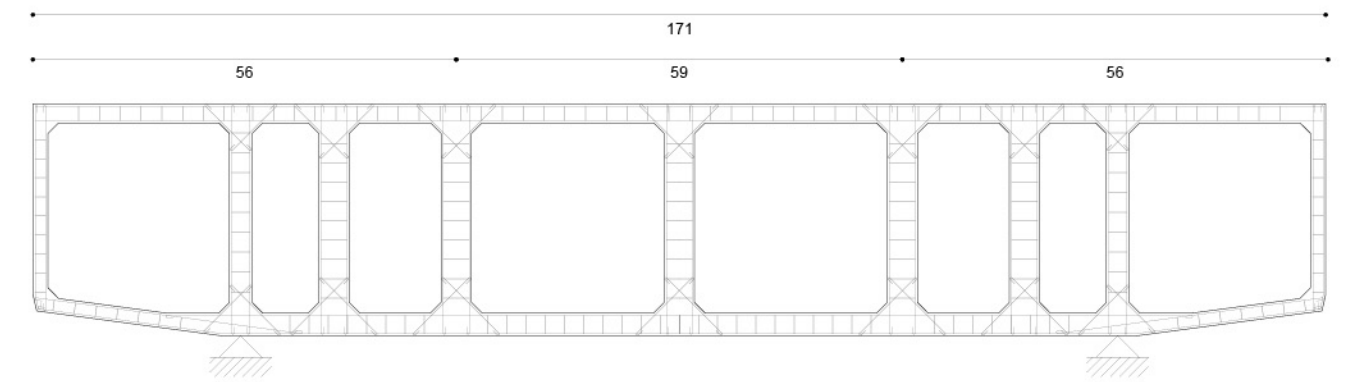
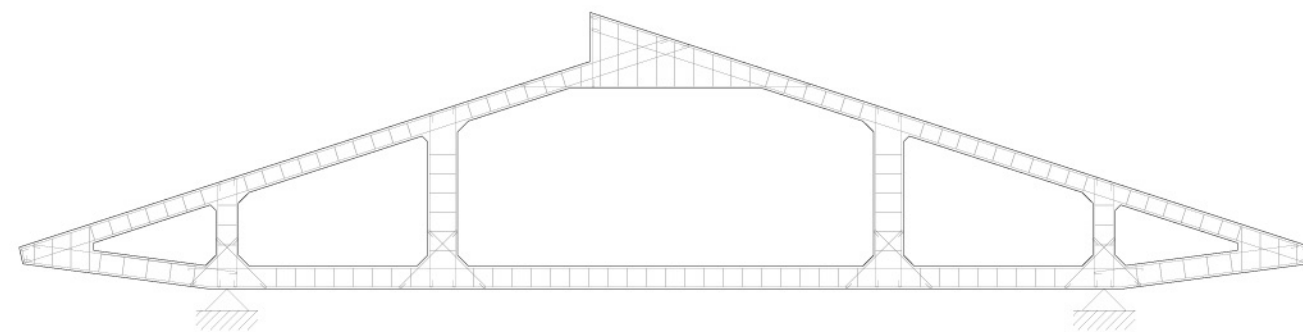
D



E



F



Geometry trusses  
(left) Preliminary design, august 1946  
(right) Executive design, november 1946  
Scale 1:100

