

Atlas of Details



Toyo Ito & Associates. Aluminium House 2000

Author(s): Gianluca Driussi

Copyright: © 2023 The Formwork

URL: <https://www.detailsinsection.org/archives/projects/aluminium-house>

All rights reserved. No part of this publication may be reproduced, distributed, or transmitted in any form or by any means, including photocopying, recording, or other electronic or mechanical methods, without the prior permission of the publisher. For permission requests regarding the partial or total reproduction of this item, write to the editor at the address below.

Please note: printing of this item for personal, noncommercial use is permitted. The graphic materials contained here have been produced for an optimised screen visualisation. For a good quality print, original full bleed sheet format (A2 horizontal) are to be maintained; inkjet plotting on opaque coated paper should be preferred.

Atlas of Details is a research project to demonstrate how insightful a section can be, in order to represent the complexity of the architectural artifact, since it allows the simultaneous perception of materiality and form, of building envelope and interior spaces. Atlas of Details is a project by The Formwork, an association established by professors and PhD candidates with diverse academic backgrounds (history, architectural design, technology, preservation) working at the IUAV University in Venice and at the Milan Politecnico. For more information about the Atlas of Details and The Formwork, please contact info@theformwork.org.

The Formwork

Cultural association

Cannaregio 638,

30121 Venezia (VE)

<https://www.theformwork.org/staging>

<https://www.detailsinsection.org/staging>

info@theformwork.org

Toyo Ito & Associates

Aluminium House

2000

Text

Gianluca Driussi
IUAV Venezia

Drawings

Gianluca Driussi
IUAV Venezia

Architect

Toyo Ito & Associates

Name of the building

Aluminium house

Site

Sakurajosui, Tokyo

Client

A married couple

Contractors

Nippon Light Metal Group

Engineer

Masato Araya (Oak Structural Design office)

Other actors

Kawaguchi Mechanical Engineering (mechanical engineer)

Building permit

1997

Start of construction works

1999

Project variations

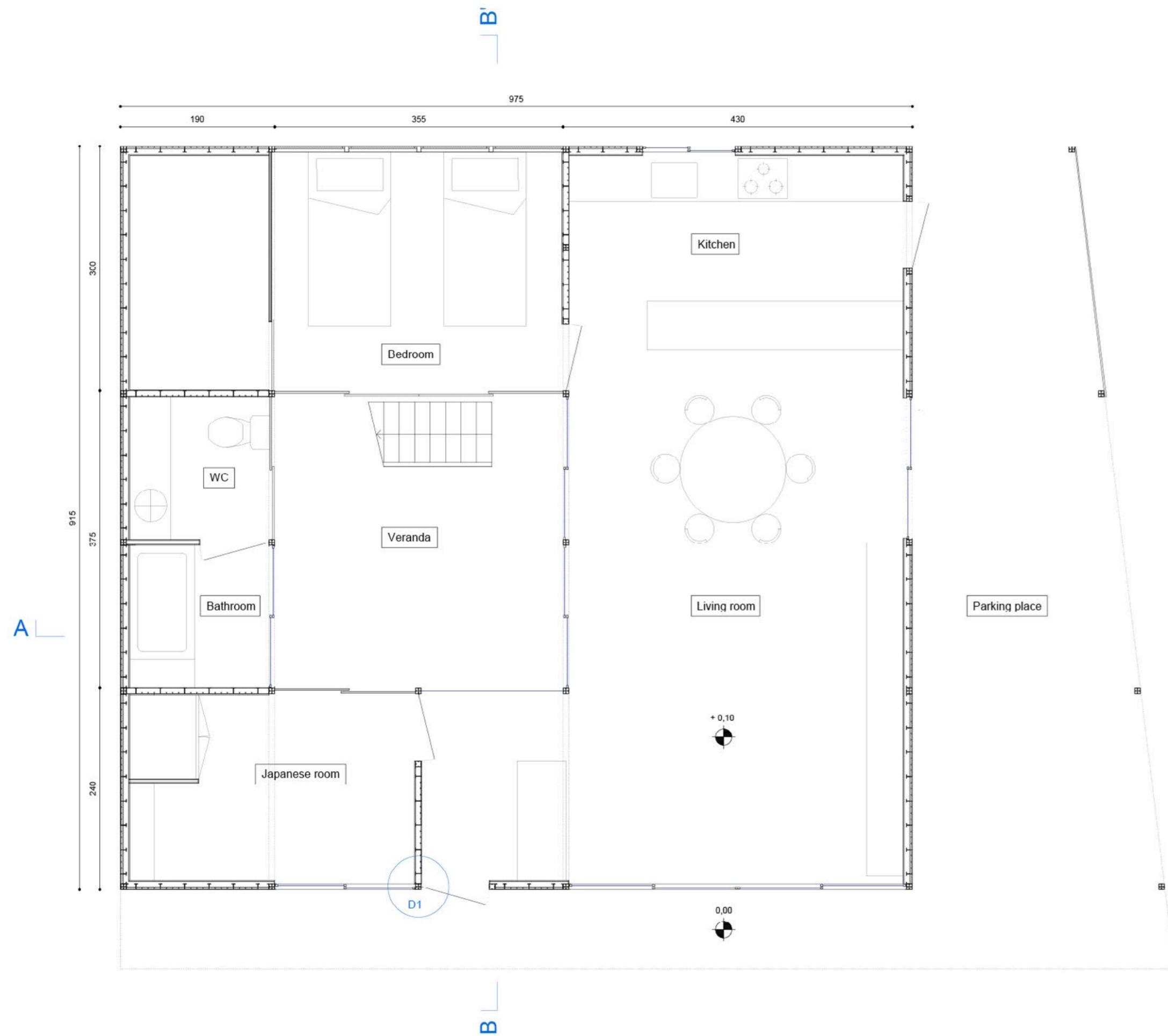
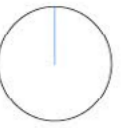
2000

End of construction works

1932

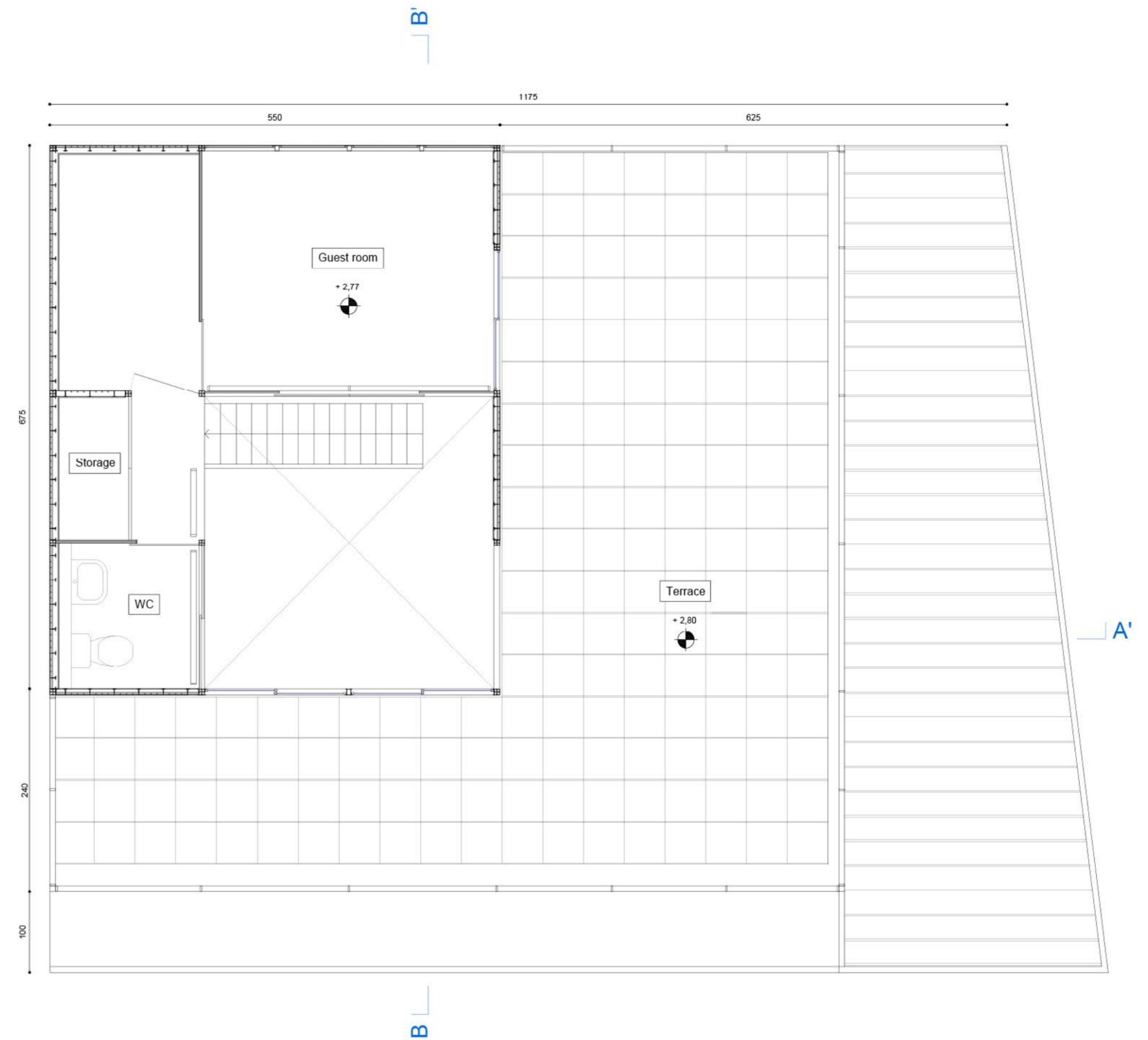
Construction system

Modular system with aluminum structural elements

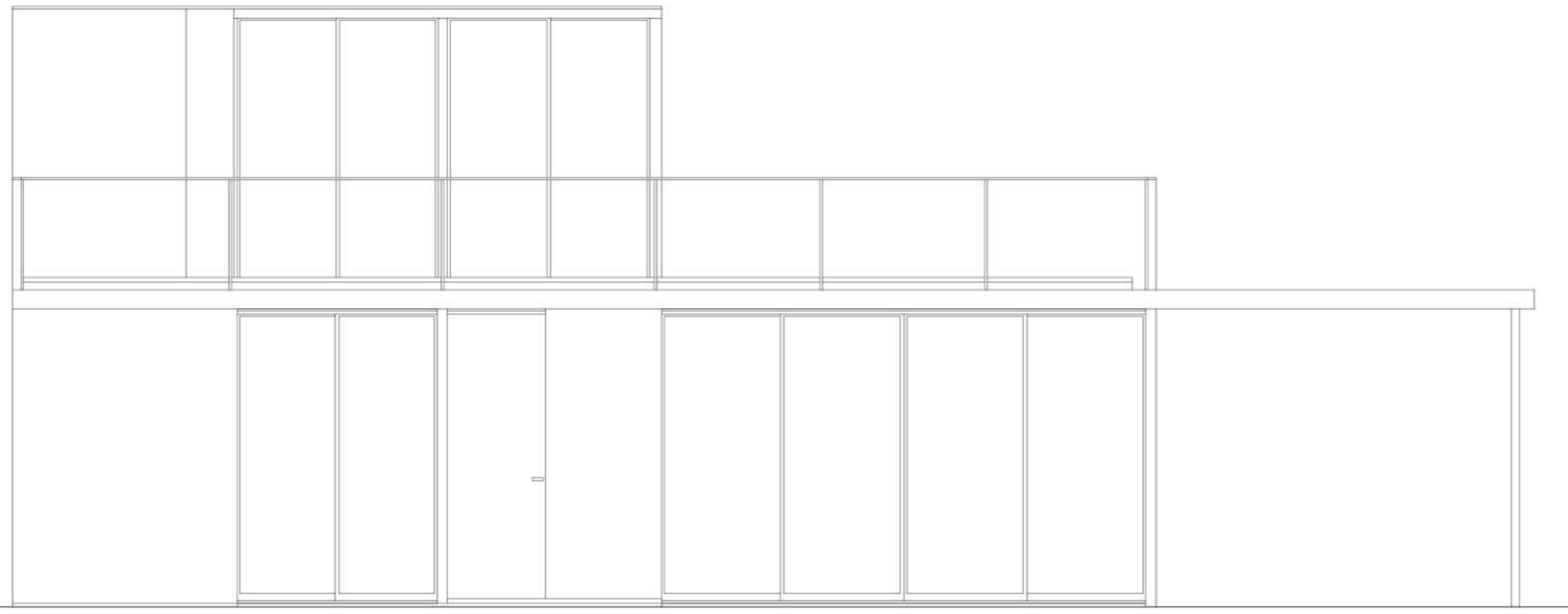


Ground floor plan

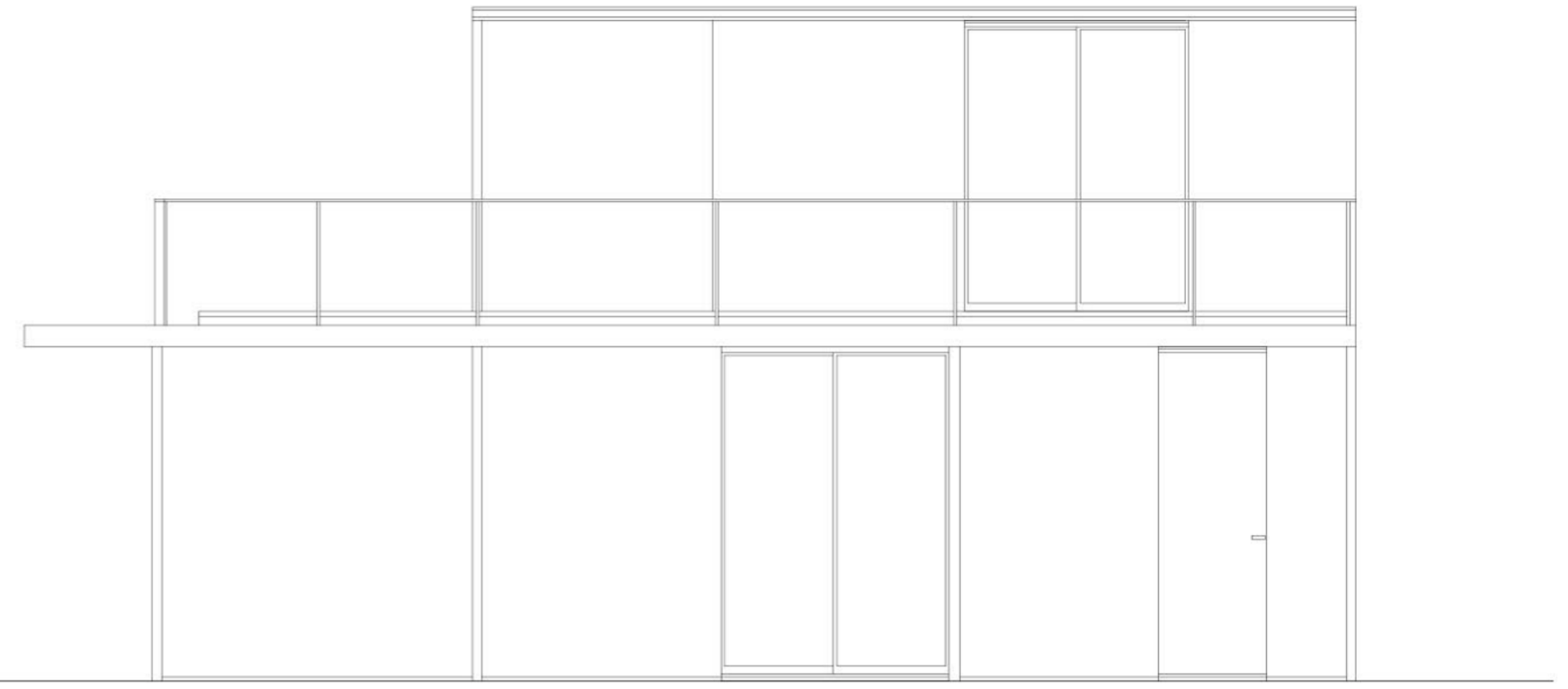
Scale 1:50



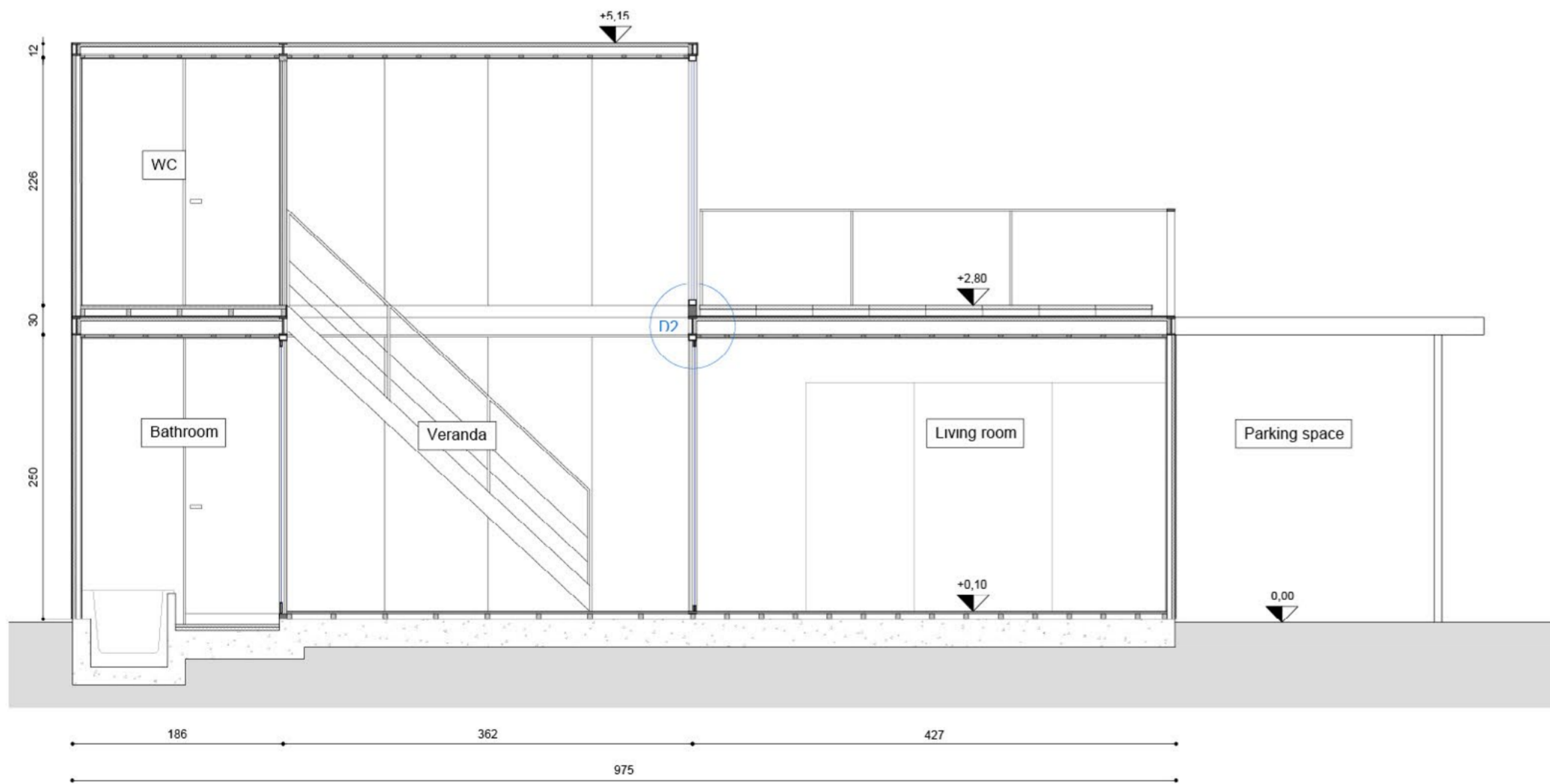
First floor plan



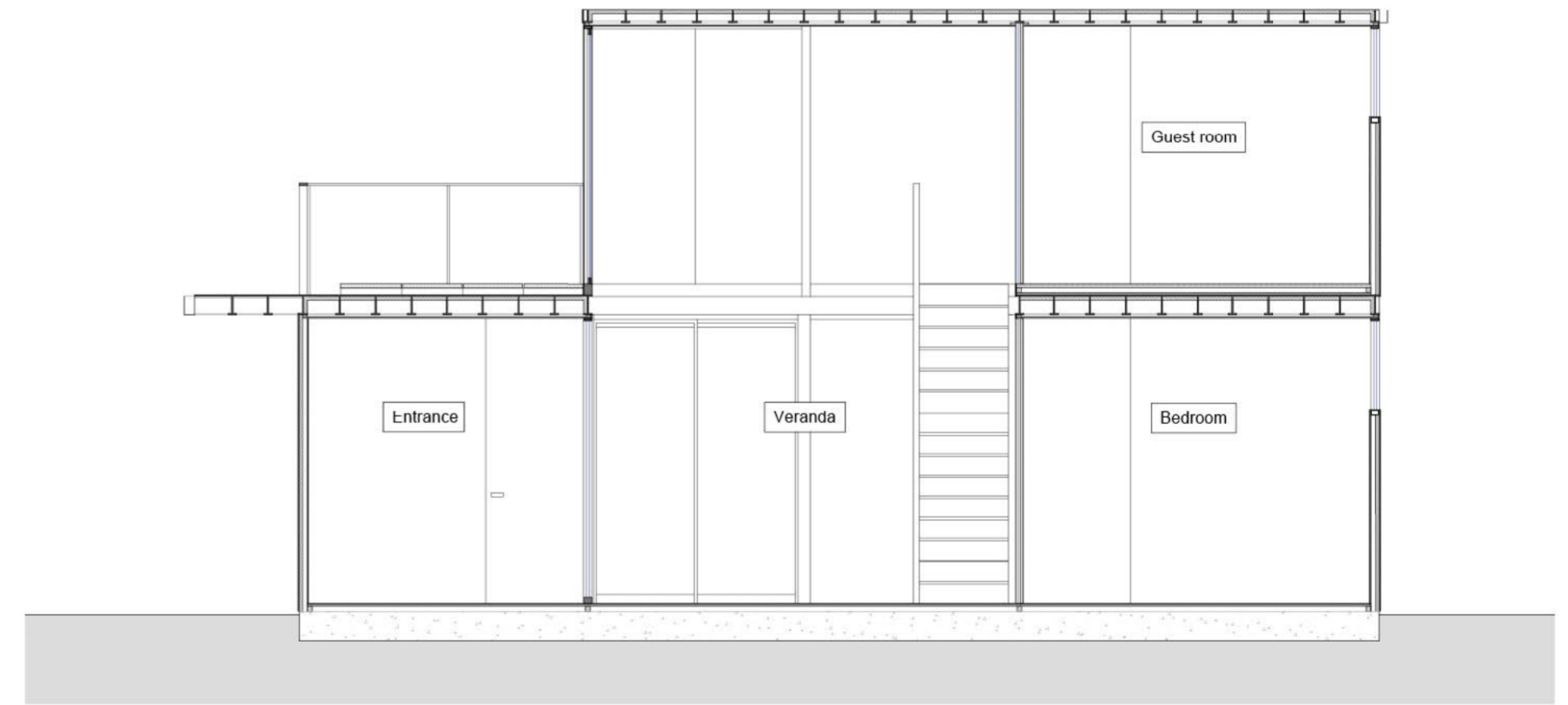
South elevation



East elevation



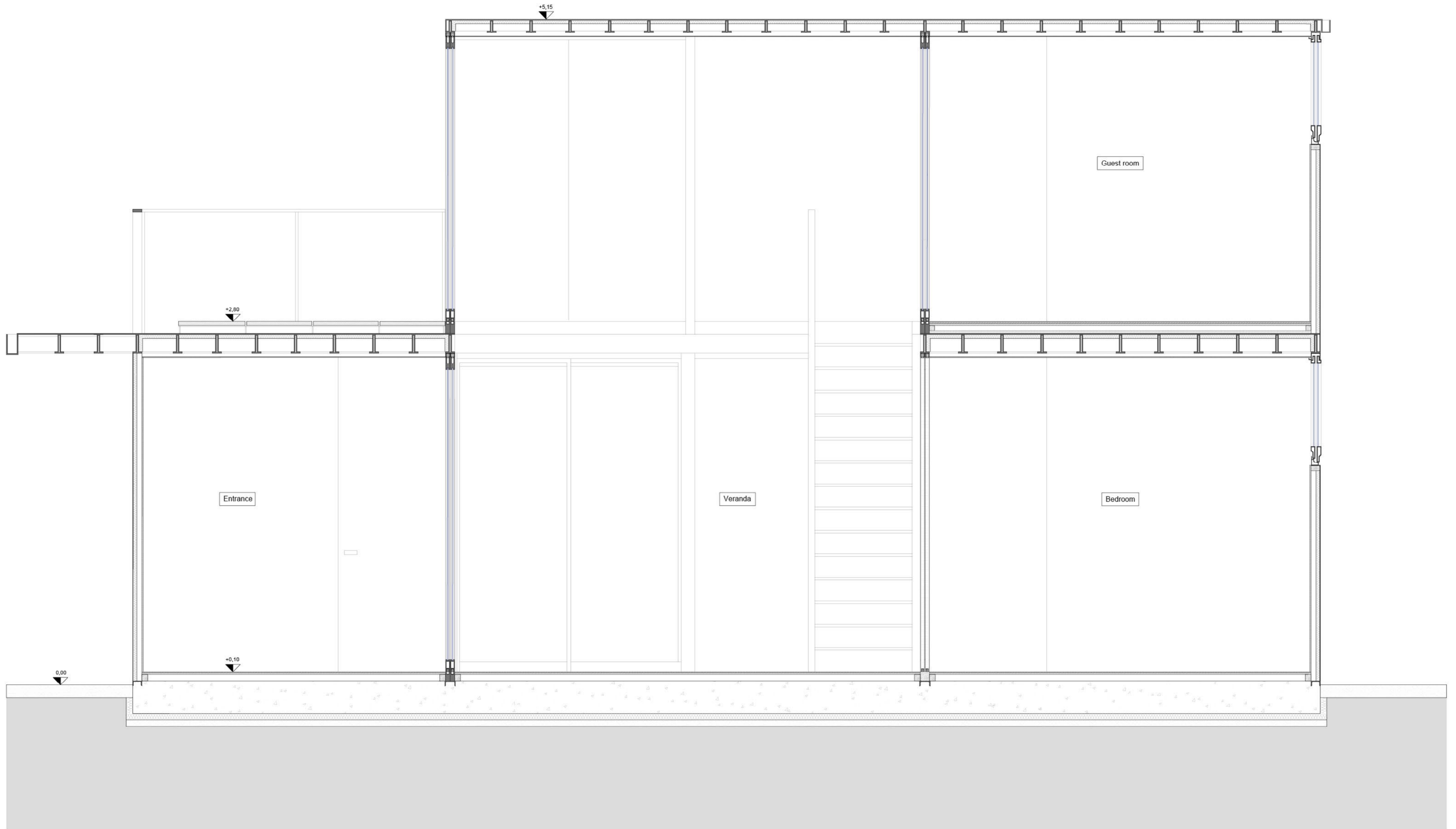
Section A-A'



Section B-B'

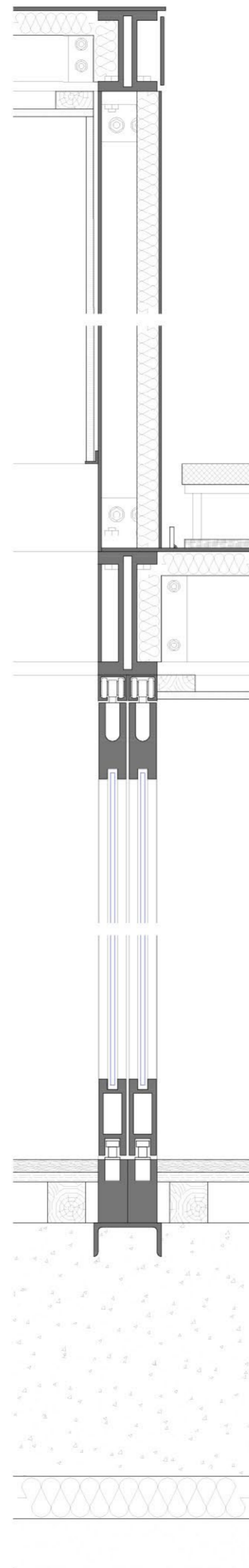
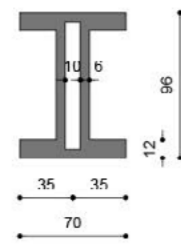
Scale 1:50





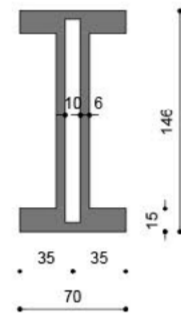
Section B-B'
Scale 1:20
0 0.2 0.4 2 m

Coverage
 Aluminium plate
 rubber membrane
 insulating material
 wooden slats
 plasterboard panel



Detail 2

Terrace slab
 Prefabricated concrete panels
 rubber filler
 aluminium plate
 insulating material
 wooden slats
 plasterboard panel

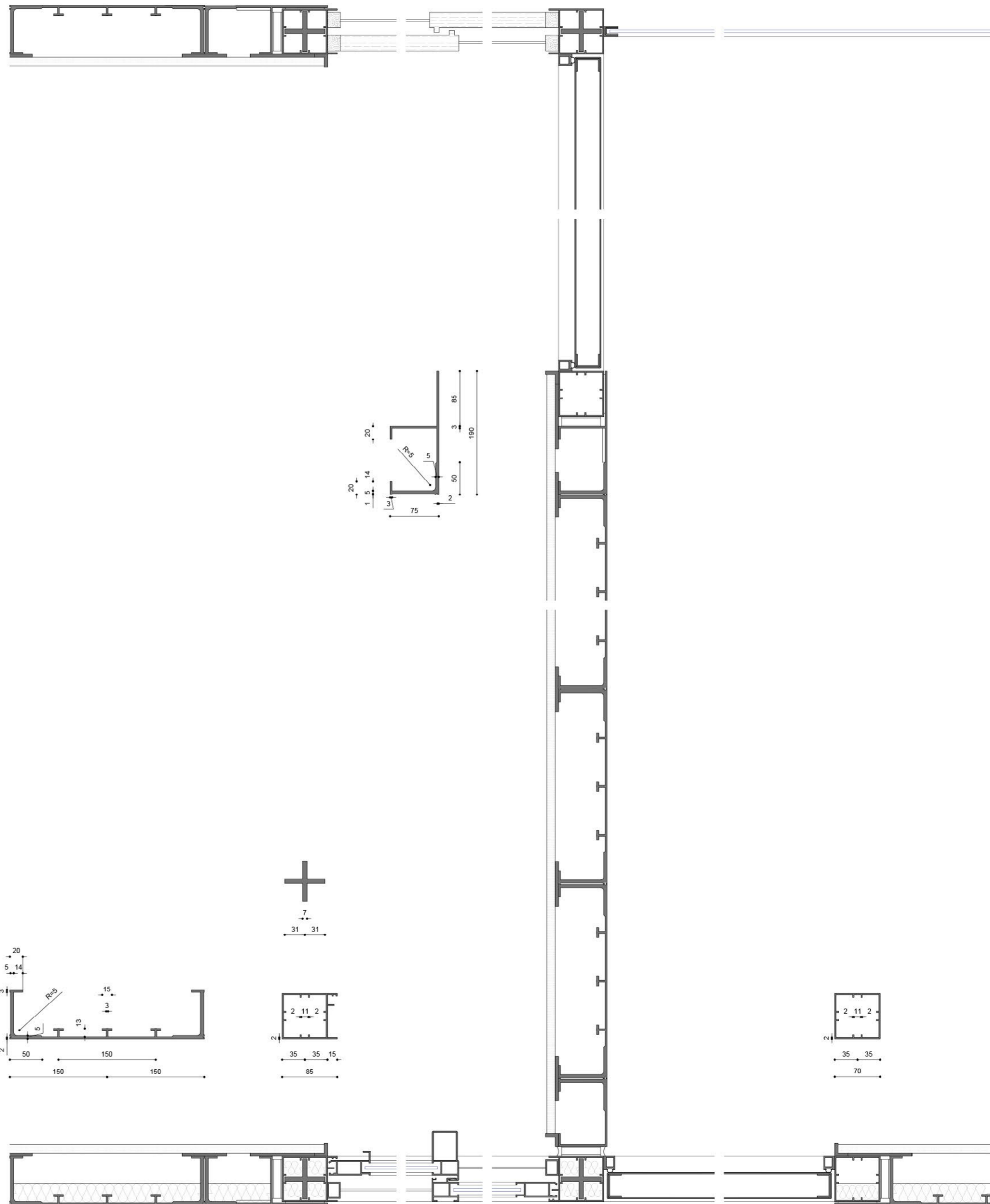


Ground floor foundation and slab
 Paving
 plywood
 wooden slats
 reinforced concrete floor
 insulating material
 vapor barrier
 lean concrete

Scale 1:5



Internal wall
 Aluminium panel
 bitumen membrane
 plasterboard panel



Detail 1

Internal wall
 Plasterboard panel
 rubber sheet
 insulating material
 rubber membrane
 aluminium panel