

# Atlas of Details



## **Toyo Ito & Associates. Aluminium Cottage 2004**

Author(s): Gianluca Driussi

Copyright: © 2023 The Formwork

URL: <https://www.detailsinsection.org/archives/projects/aluminium-cottage>

---

All rights reserved. No part of this publication may be reproduced, distributed, or transmitted in any form or by any means, including photocopying, recording, or other electronic or mechanical methods, without the prior permission of the publisher. For permission requests regarding the partial or total reproduction of this item, write to the editor at the address below.

Please note: printing of this item for personal, noncommercial use is permitted. The graphic materials contained here have been produced for an optimised screen visualisation. For a good quality print, original full bleed sheet format (A2 horizontal) are to be maintained; inkjet plotting on opaque coated paper should be preferred.

Atlas of Details is a research project to demonstrate how insightful a section can be, in order to represent the complexity of the architectural artifact, since it allows the simultaneous perception of materiality and form, of building envelope and interior spaces. Atlas of Details is a project by The Formwork, an association established by professors and PhD candidates with diverse academic backgrounds (history, architectural design, technology, preservation) working at the IUAV University in Venice and at the Milan Politecnico. For more information about the Atlas of Details and The Formwork, please contact [info@theformwork.org](mailto:info@theformwork.org).

### **The Formwork**

Cultural association

Cannaregio 638,

30121 Venezia (VE)

<https://www.theformwork.org/staging>

<https://www.detailsinsection.org/staging>

[info@theformwork.org](mailto:info@theformwork.org)

# **Toyo Ito & Associates**

## **Aluminium Cottage**

2004

**Text**

Gianluca Driussi  
IUAV Venezia

**Drawings**

Gianluca Driussi  
IUAV Venezia

**Architect**

Toyo Ito & Associates

**Name of the building**

*Aluminium cottage*

**Site**

Minamikoma, Yamanashi

**Contractors**

Nippon Light Metal Group

**Engineer**

Masato Araya (Oak Structural Design office)

**Other actors**

ES Associates (equipment design)

**Building permit**

June 2002

**Start of construction works**

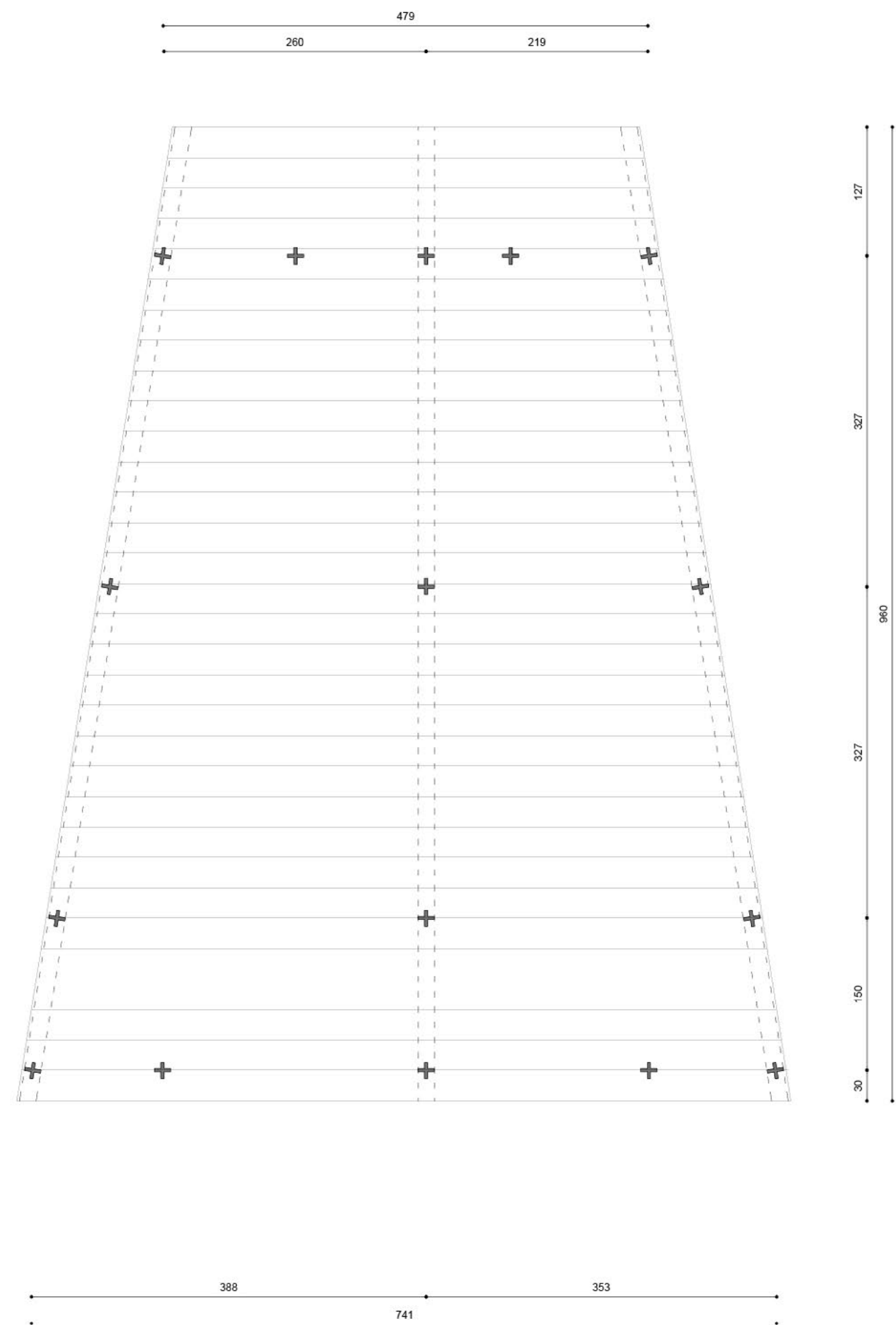
April 2004

**End of construction works**

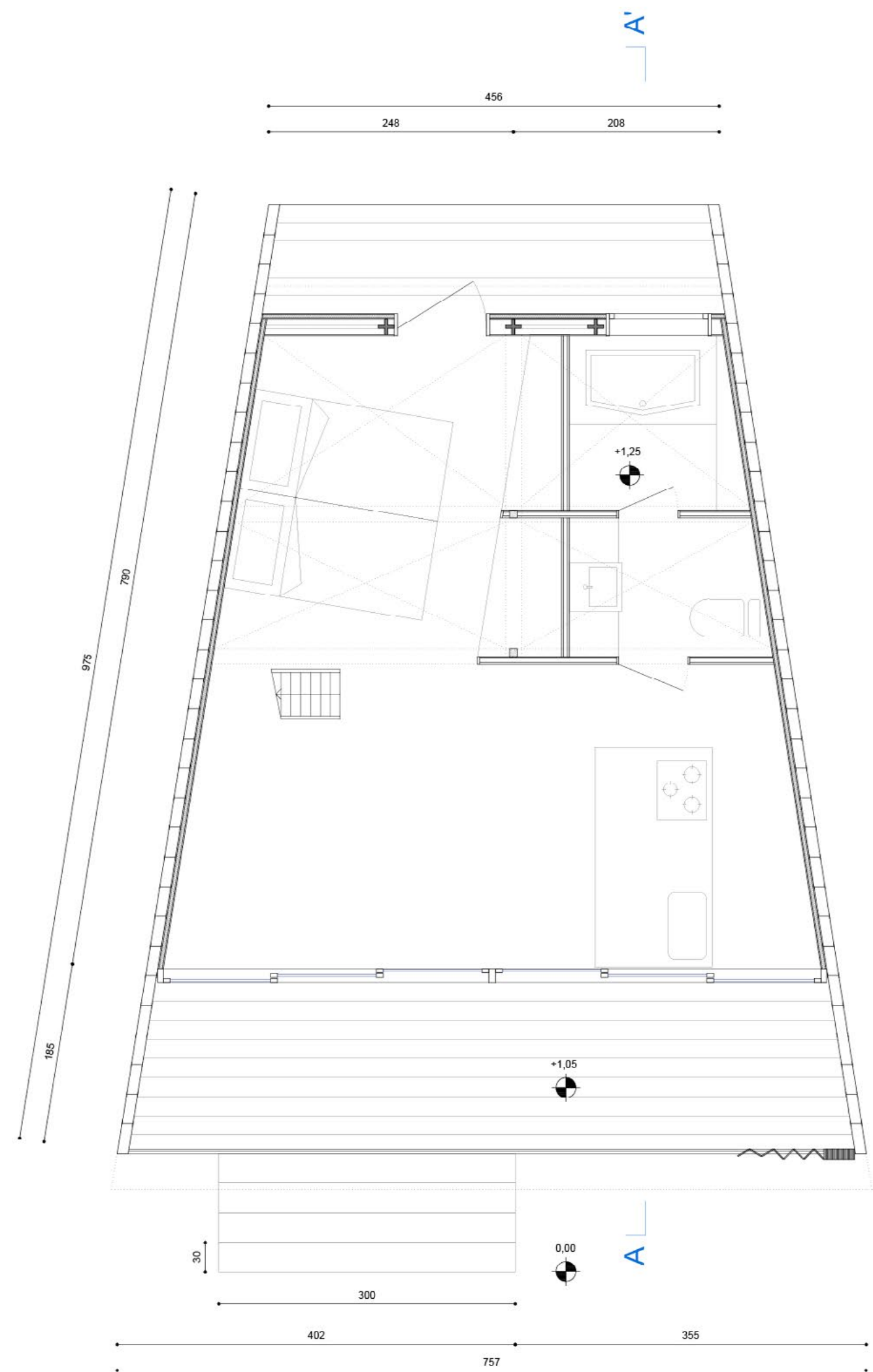
September 2004

**Construction system**

Modular system with aluminum structural elements



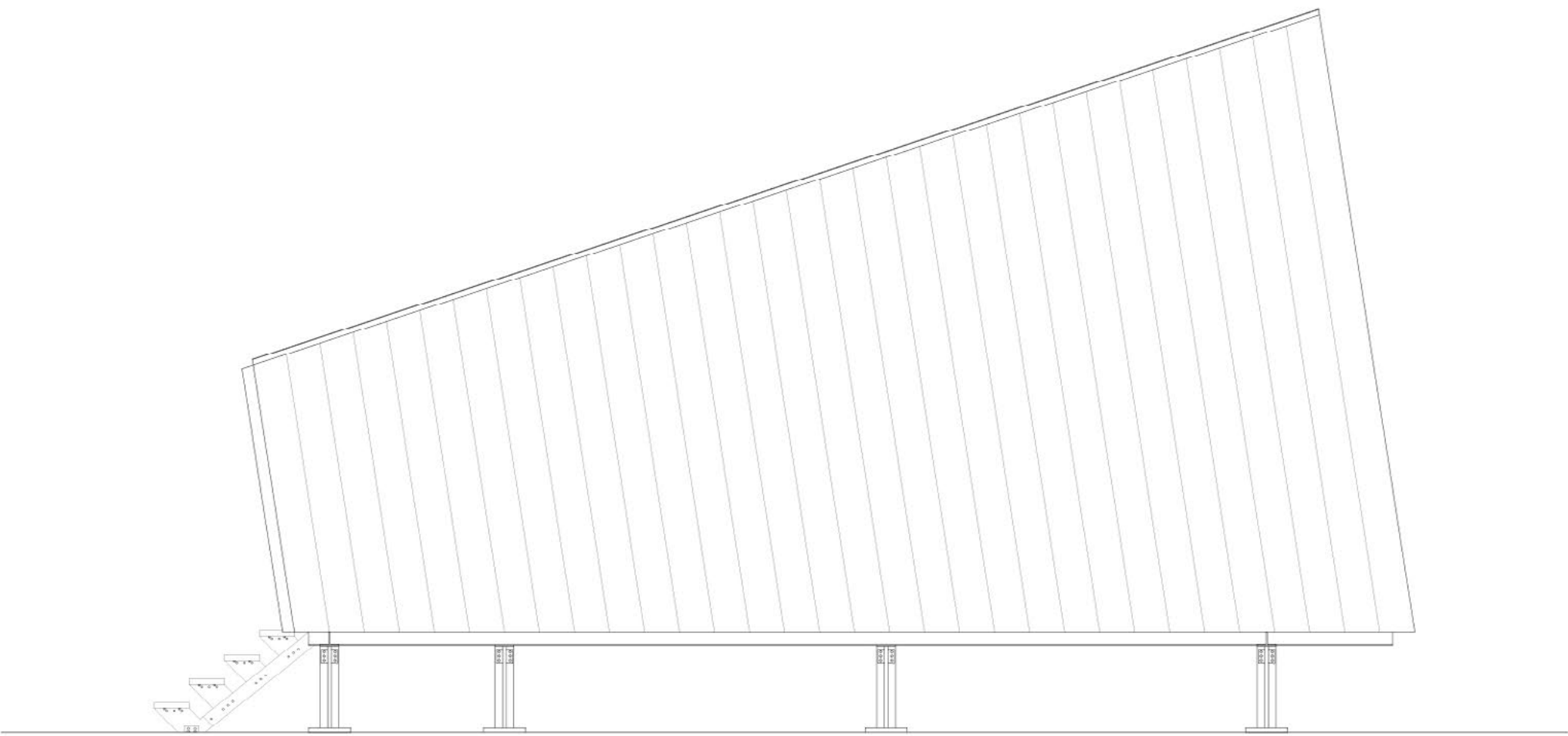
Plant structural system elevation  
Scale 1:50



Ground floor plan



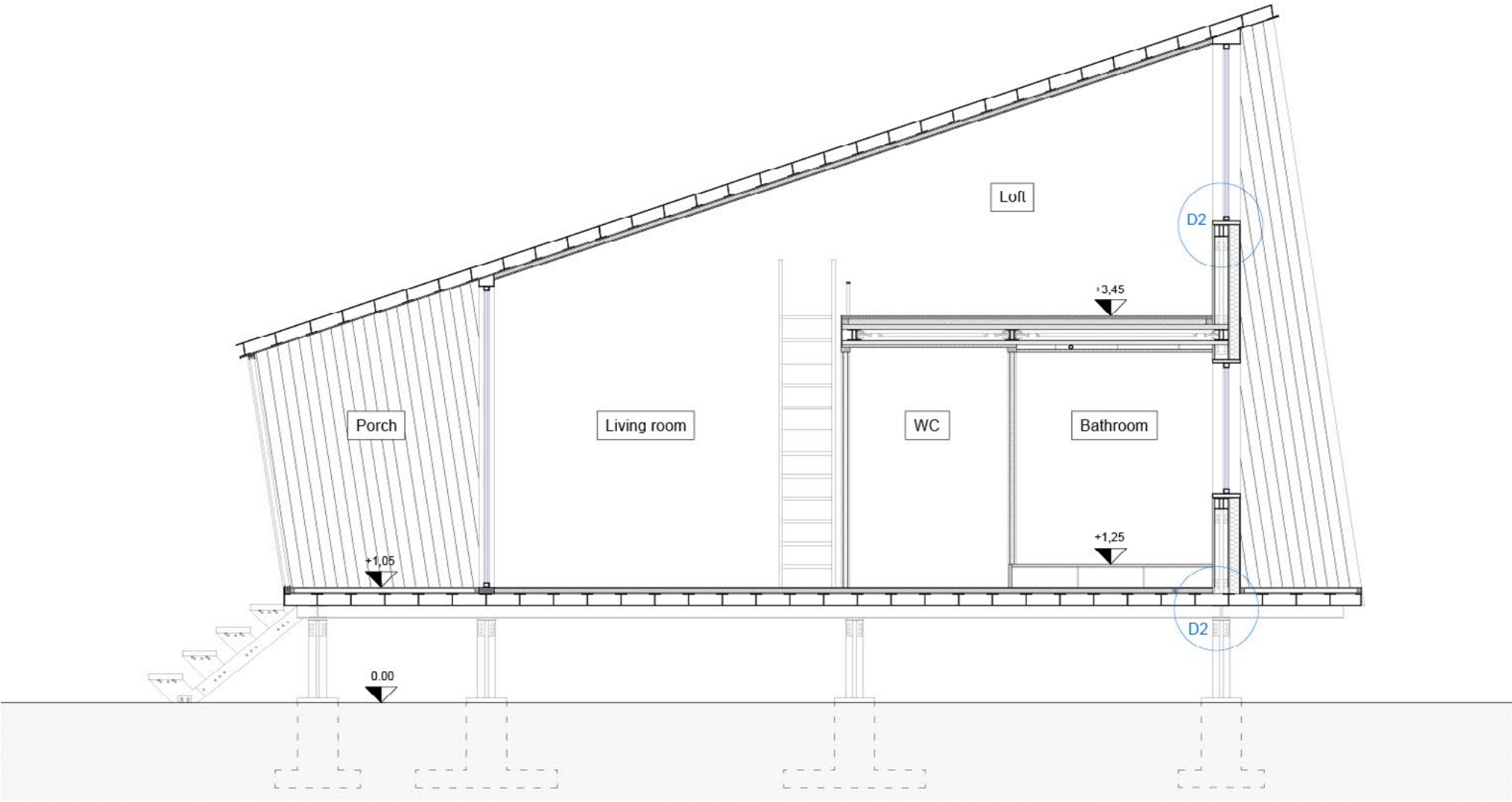
South elevation



East elevation

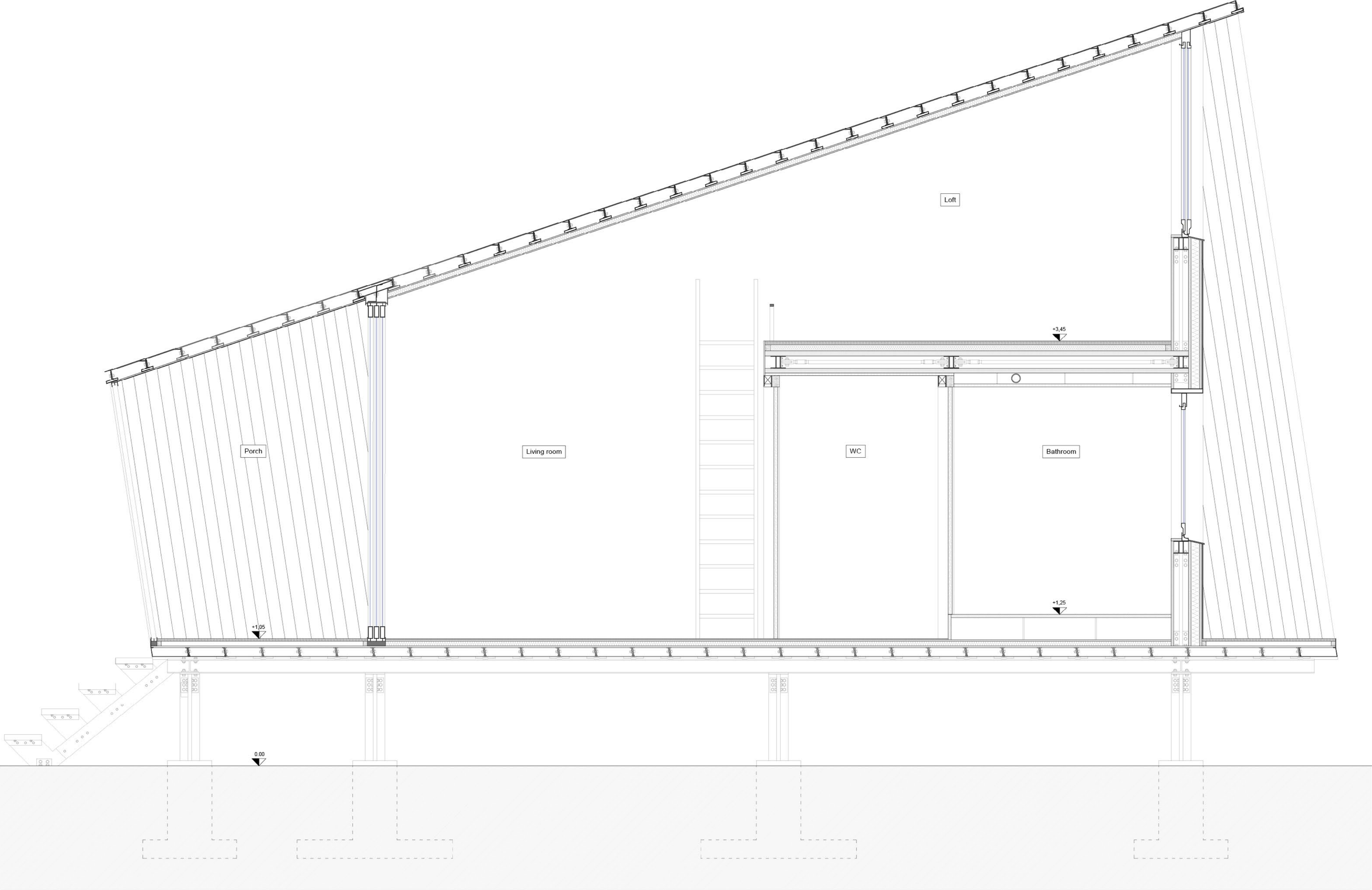


North elevation



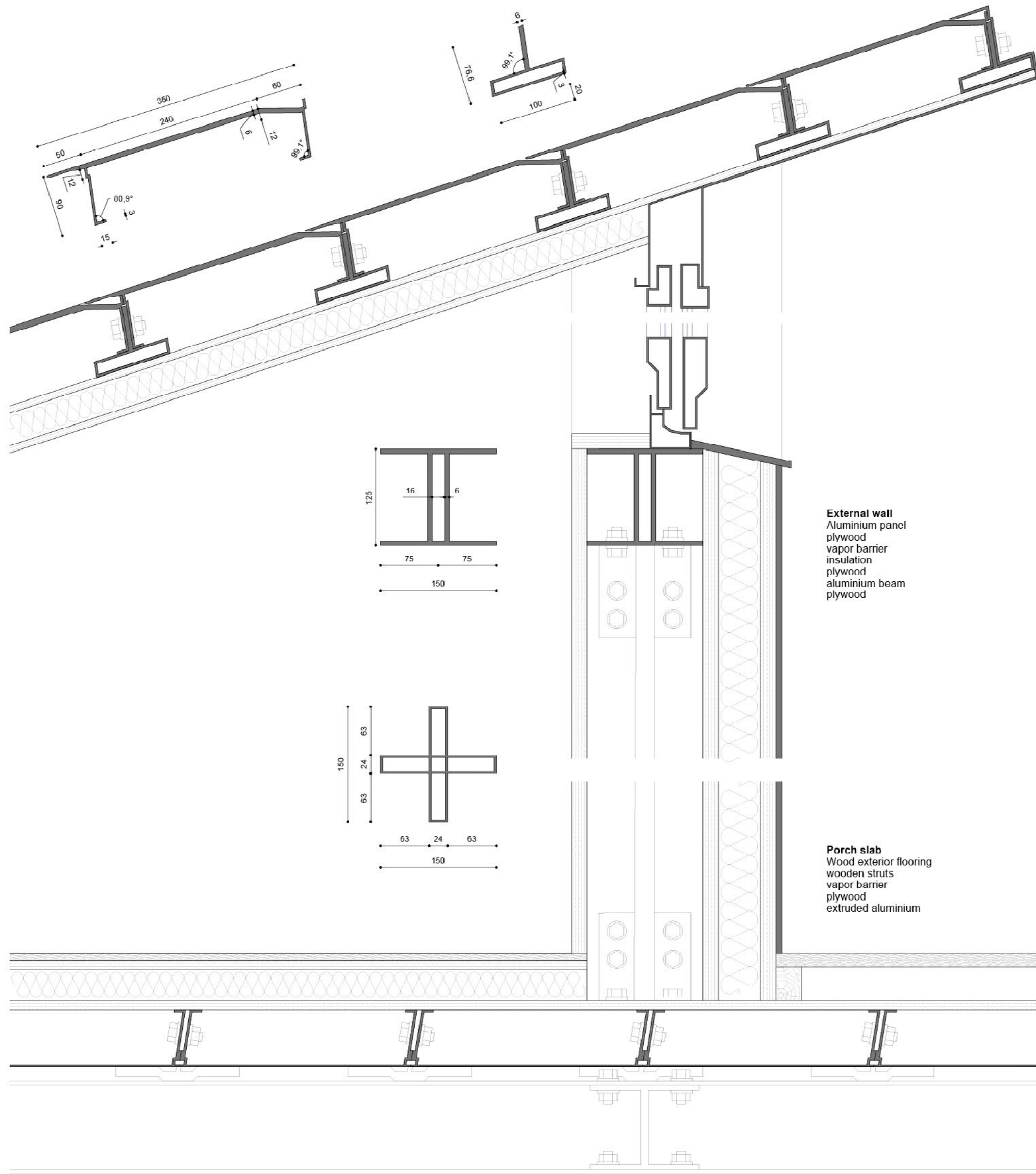
Section A-A'



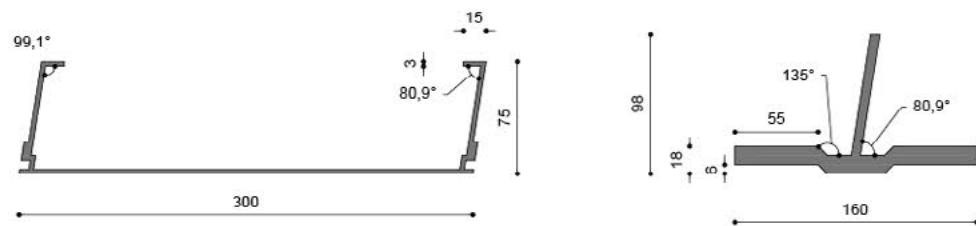


Section A-A'  
Scale 1:20

0 0,2 0,4 2 m



Detail 2



Scale 1:5



**External wall**  
Aluminium panel  
plywood  
vapor barrier  
insulation  
plywood  
aluminium beam  
plywood

**Porch slab**  
Wood exterior flooring  
wooden struts  
vapor barrier  
plywood  
extruded aluminium

**Coverage**  
Extruded aluminium  
plywood  
vapor barrier  
insulating material  
plywood

**Internal slab**  
Parquet  
plywood  
insulating material  
vapor barrier  
plywood  
extruded aluminium

Detail 1