

Atlas of Details



Franco Albini, Albergo-rifugio per ragazzi Pirovano 1948-1952

Author(s): Giorgia Sala

Copyright: © 2023 The Formwork

URL: <https://www.detailsinsection.org/projects/rifugio-pirovano>

All rights reserved. No part of this publication may be reproduced, distributed, or transmitted in any form or by any means, including photocopying, recording, or other electronic or mechanical methods, without the prior permission of the publisher. For permission requests regarding the partial or total reproduction of this item, write to the editor at the address below.

Please note: printing of this item for personal, noncommercial use is permitted. The graphic materials contained here have been produced for an optimised screen visualisation. For a good quality print, original full bleed sheet format (A2 horizontal) are to be maintained; inkjet plotting on opaque coated paper should be preferred.

Atlas of Details is a research project to demonstrate how insightful a section can be, in order to represent the complexity of the architectural artifact, since it allows the simultaneous perception of materiality and form, of building envelope and interior spaces. Atlas of Details is a project by The Formwork, an association established by professors and PhD candidates with diverse academic backgrounds (history, architectural design, technology, preservation) working at the IUAV University in Venice and at the Milan Politecnico. For more information about the Atlas of Details and The Formwork, please contact info@theformwork.org.

The Formwork

Cultural association

Cannaregio 638,

30121 Venezia (VE)

<https://www.theformwork.org>

<https://www.detailsinsection.org>

info@theformwork.org

Franco Albini

Albergo-rifugio per

ragazzi Pirovano

1948-1952

Text

Giorgia Sala
IUAV Venezia

Drawings

Giorgia Sala
IUAV Venezia

Architect

Franco Albini (1905-1977)

Name of the building

Albergo-rifugio per ragazzi Pirovano

Site

Via Funivie, Breuil-Cervinia, Valtournenche, Aosta (IT)

Client

Giuseppe Pirovano (1908-1993)

Contractors

-

Other actors

Luigi (Gino) Colombini (1915-2011)

Project

1948-1950

Building permit

1949

Start of construction works

1950

Project variations

1946: project of a house with ski school;

1948 march: development of two projects (solution A and solution B);

1948 april: development of the so-called project "Casetta a Cervinia" (solution C);

1948 december: project variant introducing elements present in the final version (location, truncated cone pillars on the valley side and part of the structure built using the "rascard" technique);

1949 march: definition of further details of the project close to the final solution (among which the composition of the plant by addition of staggered elements);

1949 may: "Albergo a Cervinia" project with "mushroom" elements above the truncated cone pillars;

1950 february-march, 1950 may: final project;

1951 august-september: project of the wooden flagpole with metal tie rods for the flag and the advertising inscription; project of service volume under the large terrace;

1952 june-1953 october: project for the enlargement of the refuge hotel;

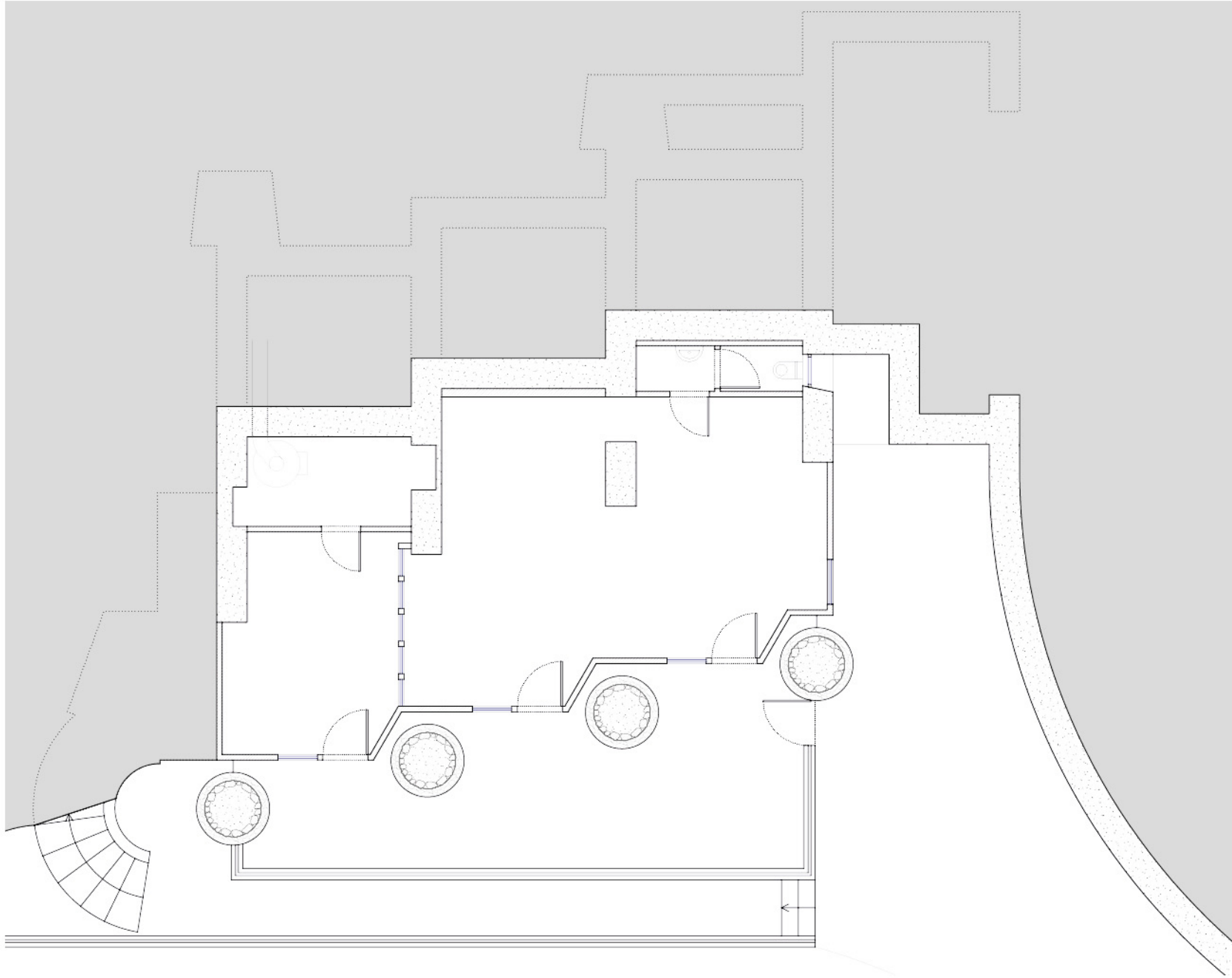
1955 july-1960 july: further enlargement project (not realized), in collaboration with Franca Helg

End of construction works

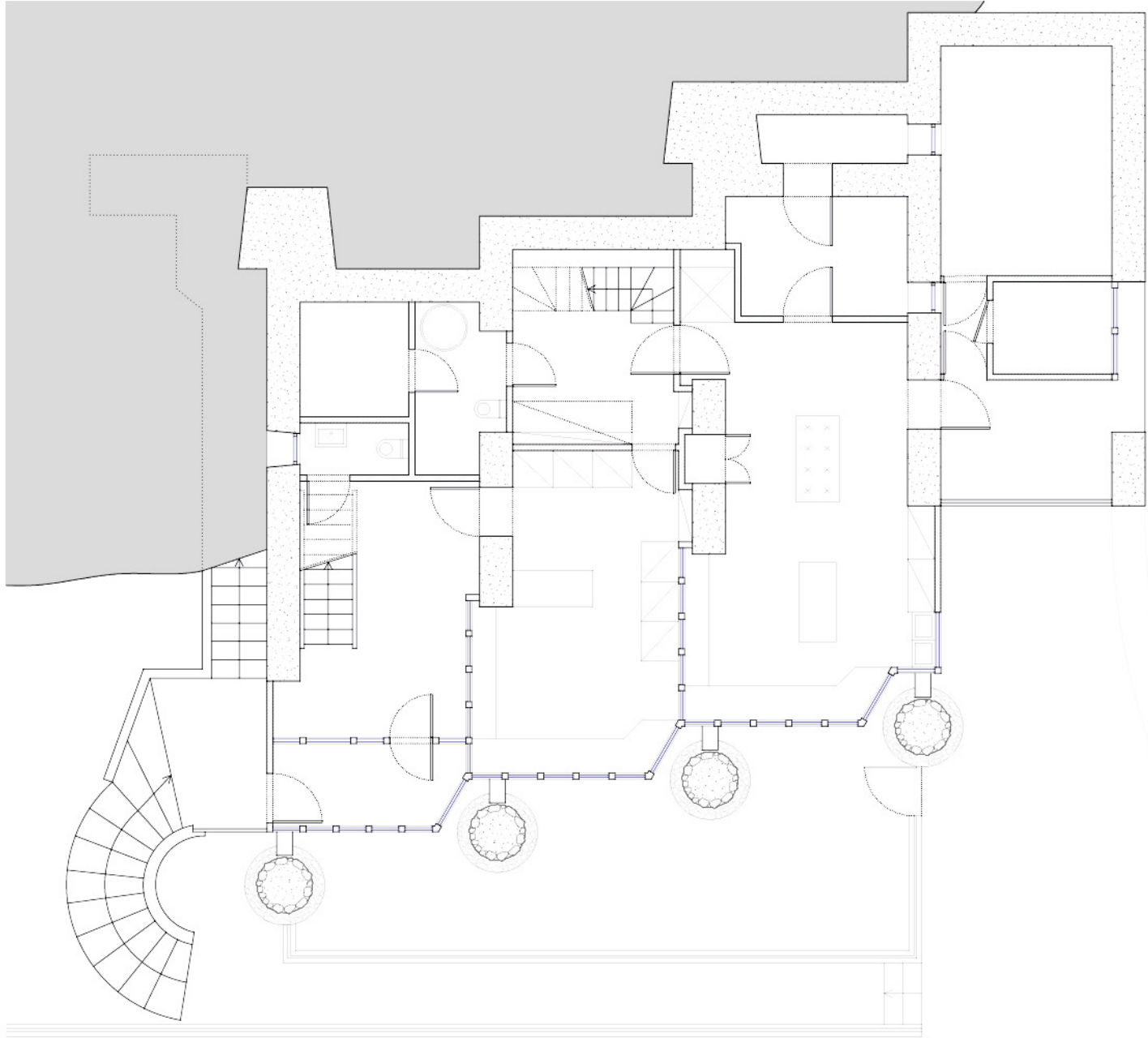
1952

Construction system

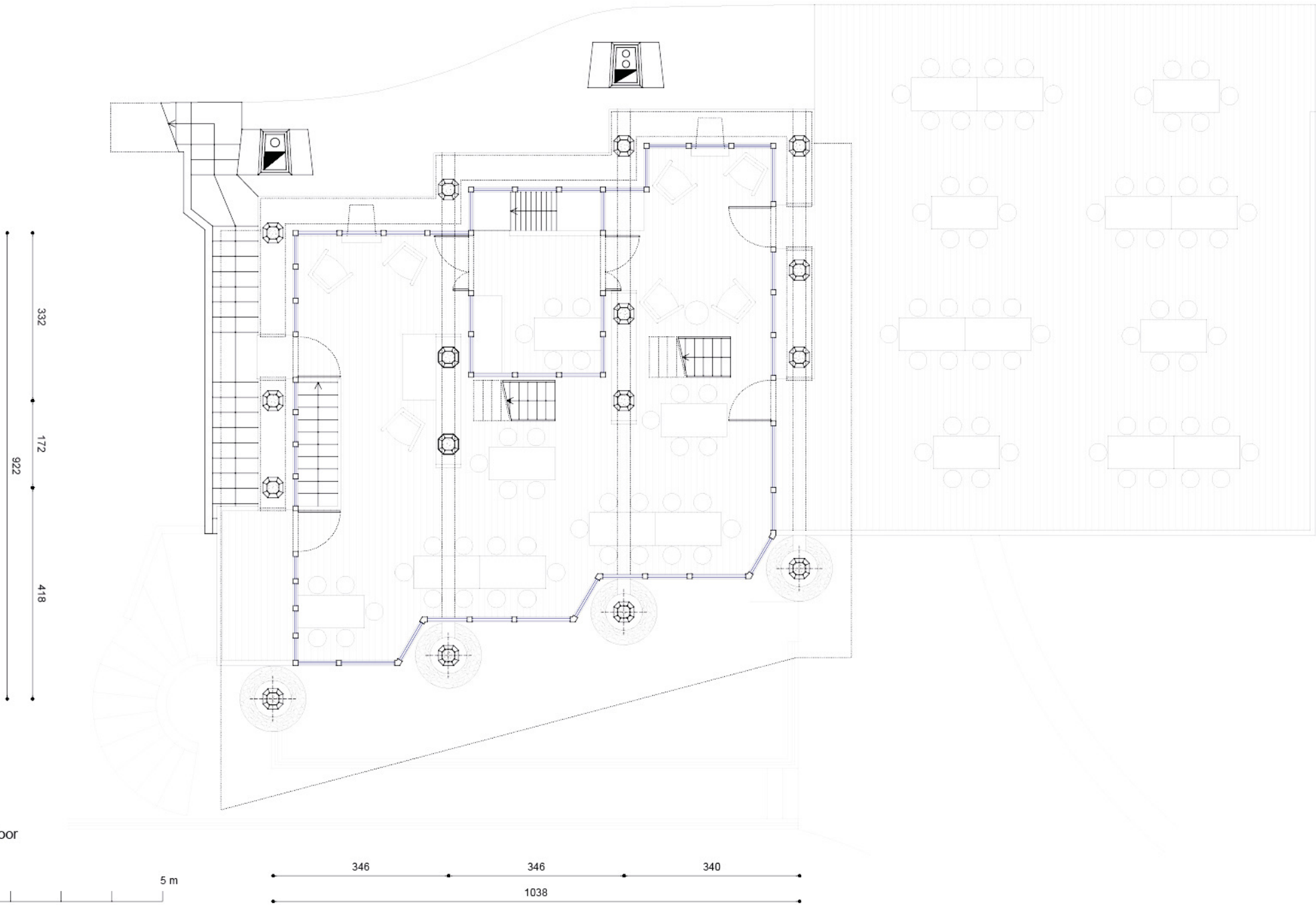
Stone and concrete masonry, respectively for the part above ground and for the part partially buried; stone pillars on the front towards the valley. The third floor and the attic are built with the traditional system of the "rascard" in larch boards.



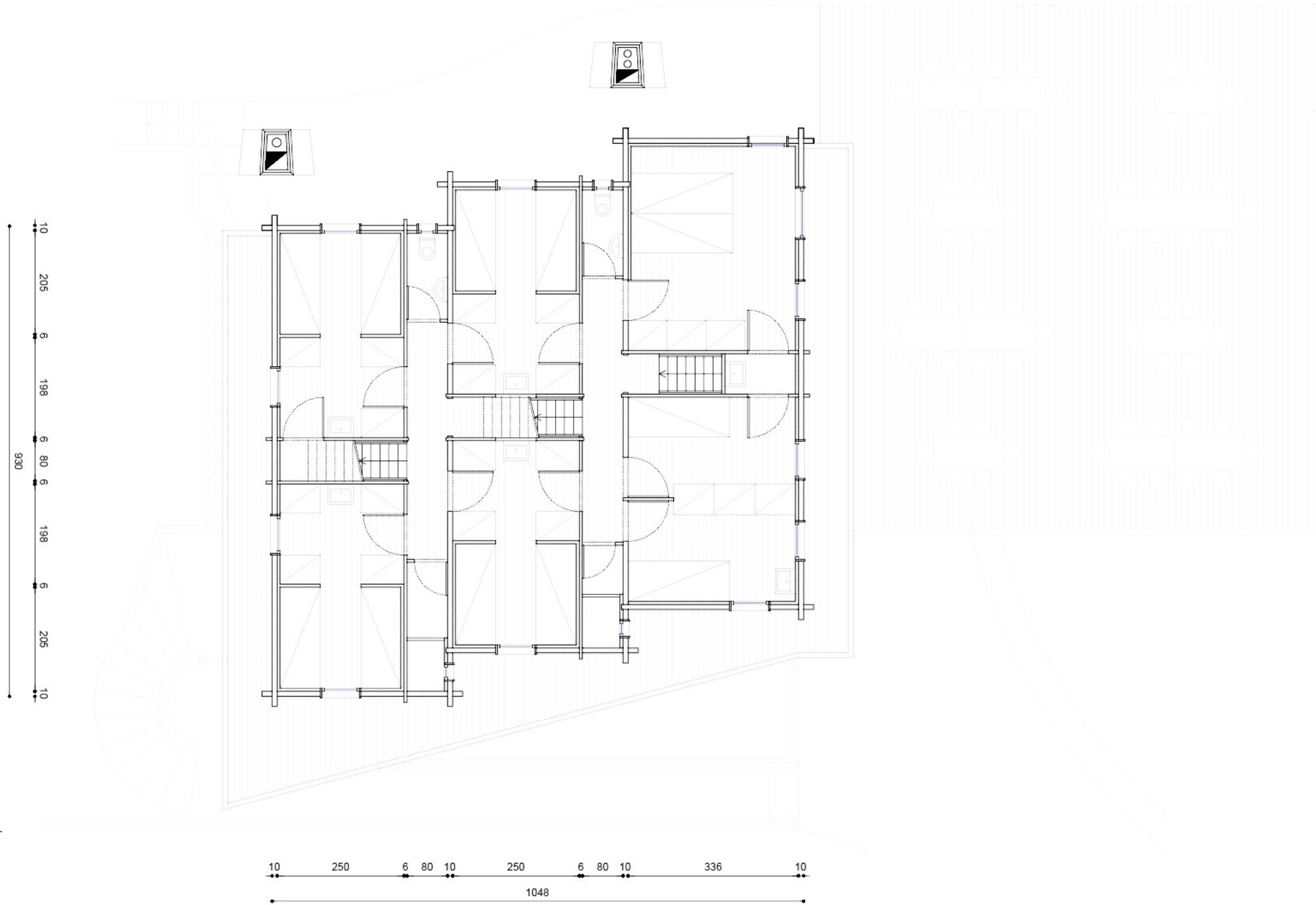
Plan, ground floor
Scale 1:100



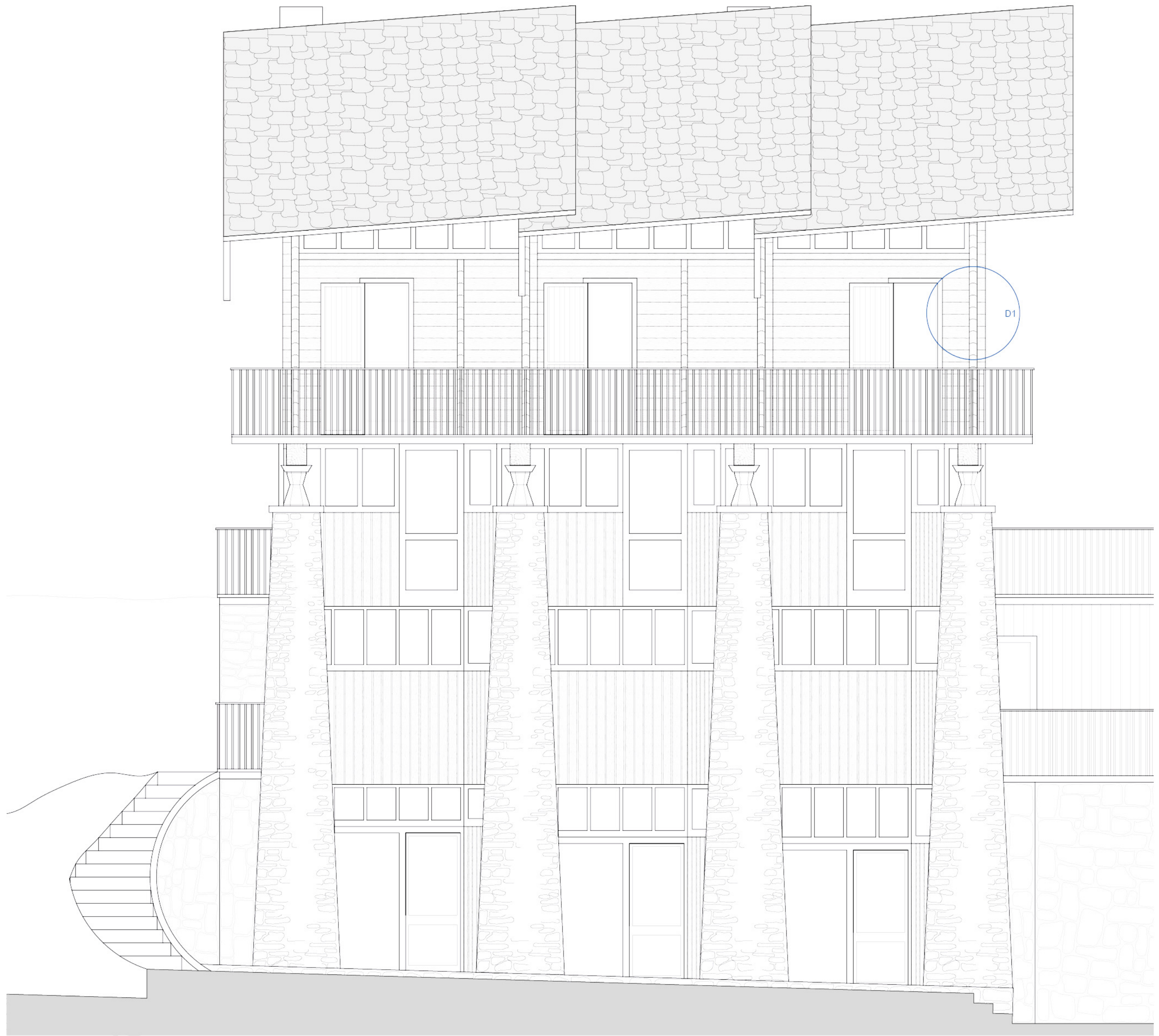
Plan, first floor
Scale 1:100



Plan, second floor
Scale 1:100

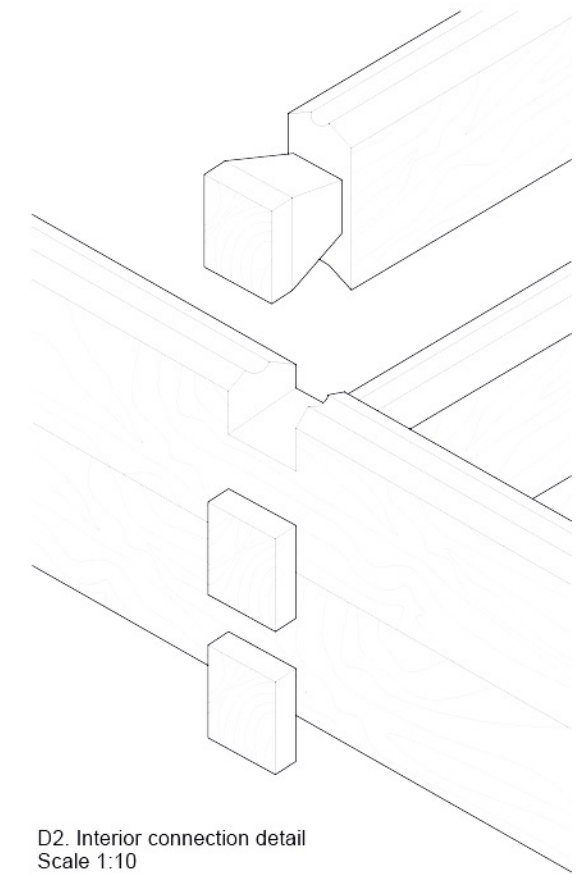
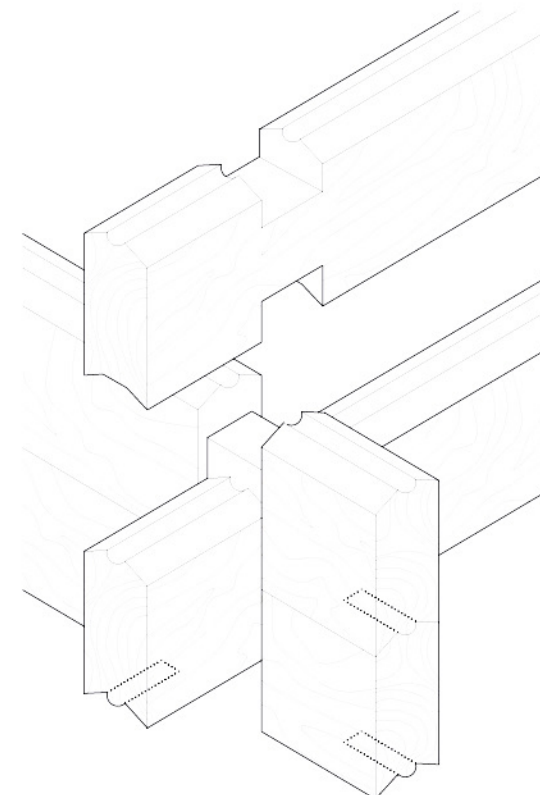
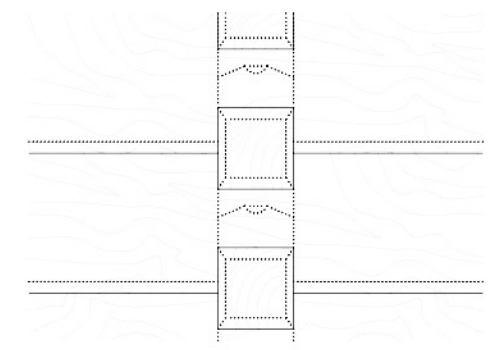
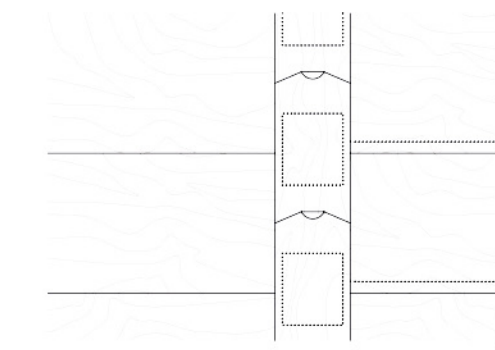
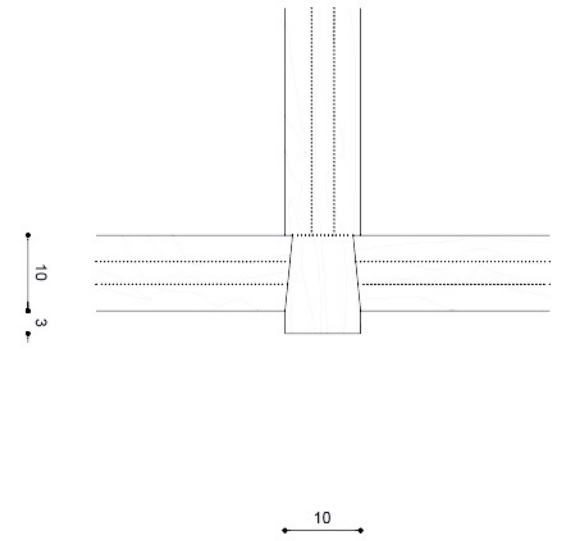
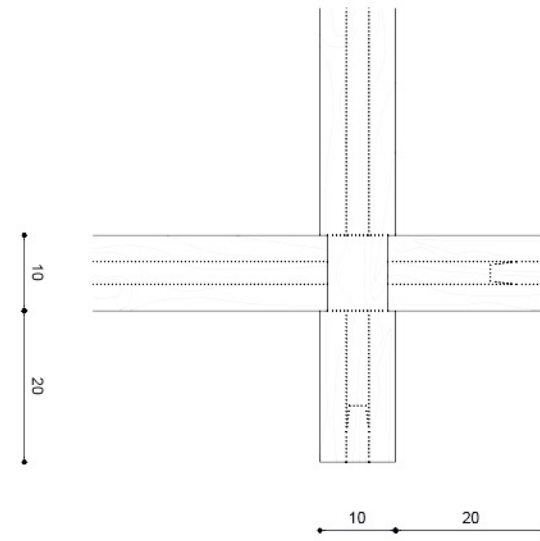


Plan, third floor
Scale 1:100



Elevation, west front
Scale 1:50

0 1 5 m

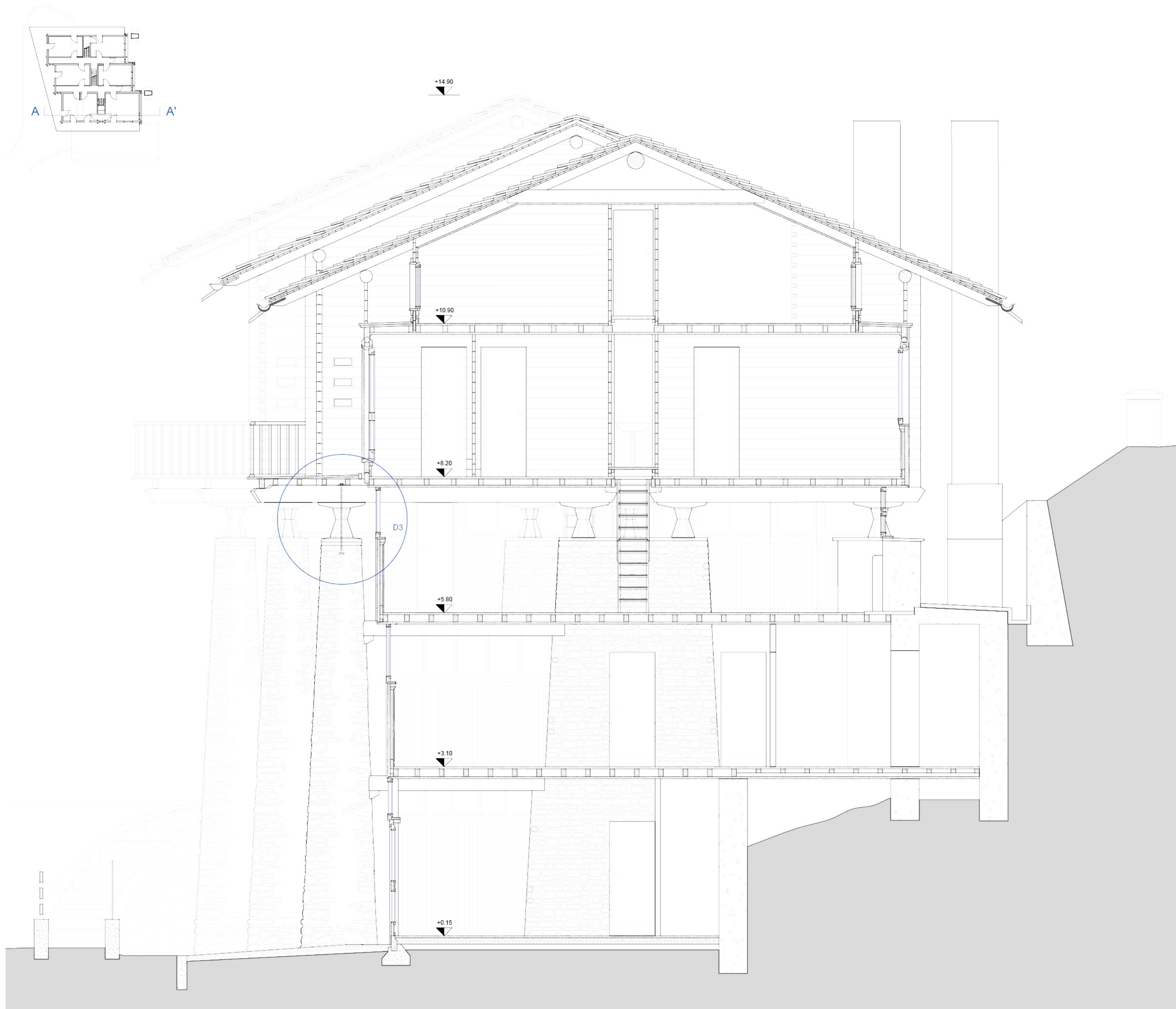


D1. Corner connection detail
Scale 1:10

D2. Interior connection detail
Scale 1:10

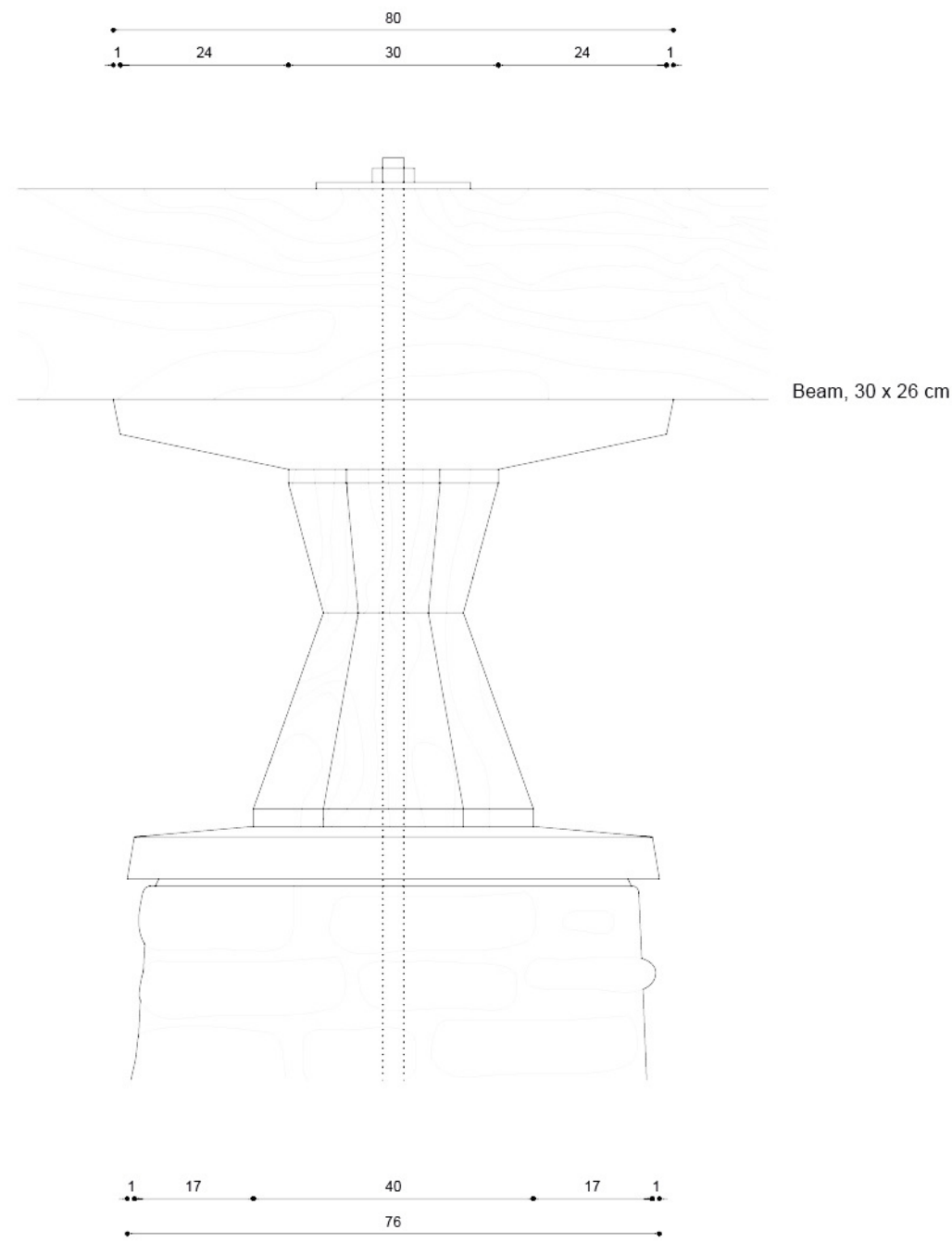
Scale 1:10

0 10 50 cm

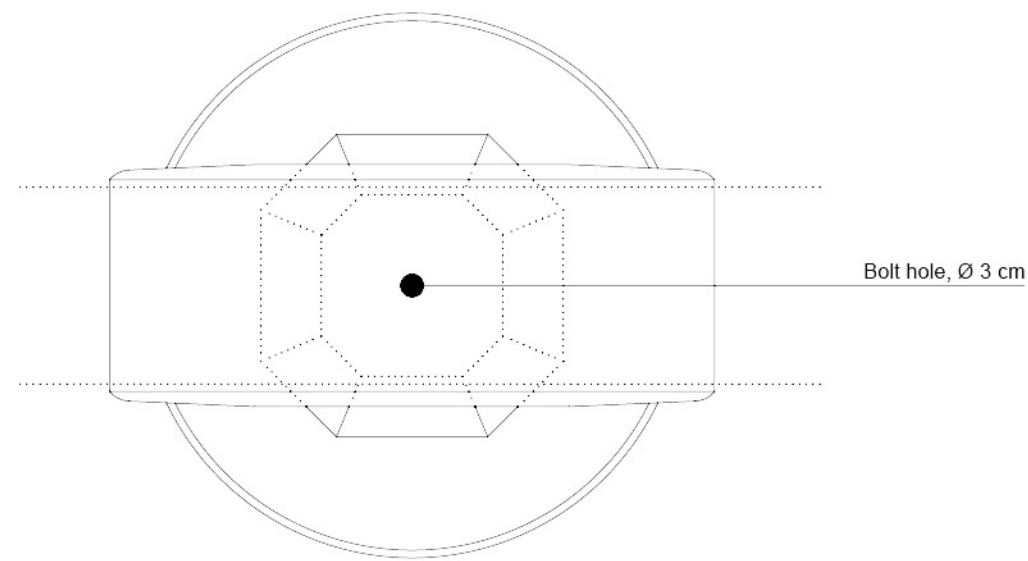


Section AA'
Scale 1:50

0 1 5 m



D3. Elevation, pillar-beam connection detail
Scale 1:10



D3. Plan, pillar-beam connection detail
Scale 1:10

Scale 1:10
0 10 50 cm