

Atlas of Details



Luigi Carlo Daneri, Pier Luigi Nervi. Salone dello Sport Nautico 1945-1950

Author(s): Francesco Antonio Bragagna

Copyright: © 2023 The Formwork

URL: <https://www.detailsinsection.org/archives/projects/salone-nautico>

All rights reserved. No part of this publication may be reproduced, distributed, or transmitted in any form or by any means, including photocopying, recording, or other electronic or mechanical methods, without the prior permission of the publisher. For permission requests regarding the partial or total reproduction of this item, write to the editor at the address below.

Please note: printing of this item for personal, noncommercial use is permitted. The graphic materials contained here have been produced for an optimised screen visualisation. For a good quality print, original full bleed sheet format (A2 horizontal) are to be maintained; inkjet plotting on opaque coated paper should be preferred.

Atlas of Details is a research project to demonstrate how insightful a section can be, in order to represent the complexity of the architectural artifact, since it allows the simultaneous perception of materiality and form, of building envelope and interior spaces. Atlas of Details is a project by The Formwork, an association established by professors and PhD candidates with diverse academic backgrounds (history, architectural design, technology, preservation) working at the IUAV University in Venice and at the Milan Politecnico. For more information about the Atlas of Details and The Formwork, please contact info@theformwork.org.

The Formwork

Cultural association

Cannaregio 638,

30121 Venezia (VE)

<https://www.theformwork.org/staging>

<https://www.detailsinsection.org/staging>

info@theformwork.org

Luigi Carlo Daneri
Pier Luigi Nervi
Salone dello Sport
Nautico
1945-1950

Text

Francesco Antonio Bragagna
IUAV Venezia

Drawings

Francesco Antonio Bragagna
IUAV Venezia

Architect

Luigi Carlo Daneri

Name of the building

Salone dello Sport Nautico, "Il San Michele"

Site

S. Michele di Pagana, Rapallo, Genova (Italy)

Client

Conte G.F. Trossi

Engineer

Ingg. Nervi & Bartoli, Roma

Building permit

1947

Start of construction works

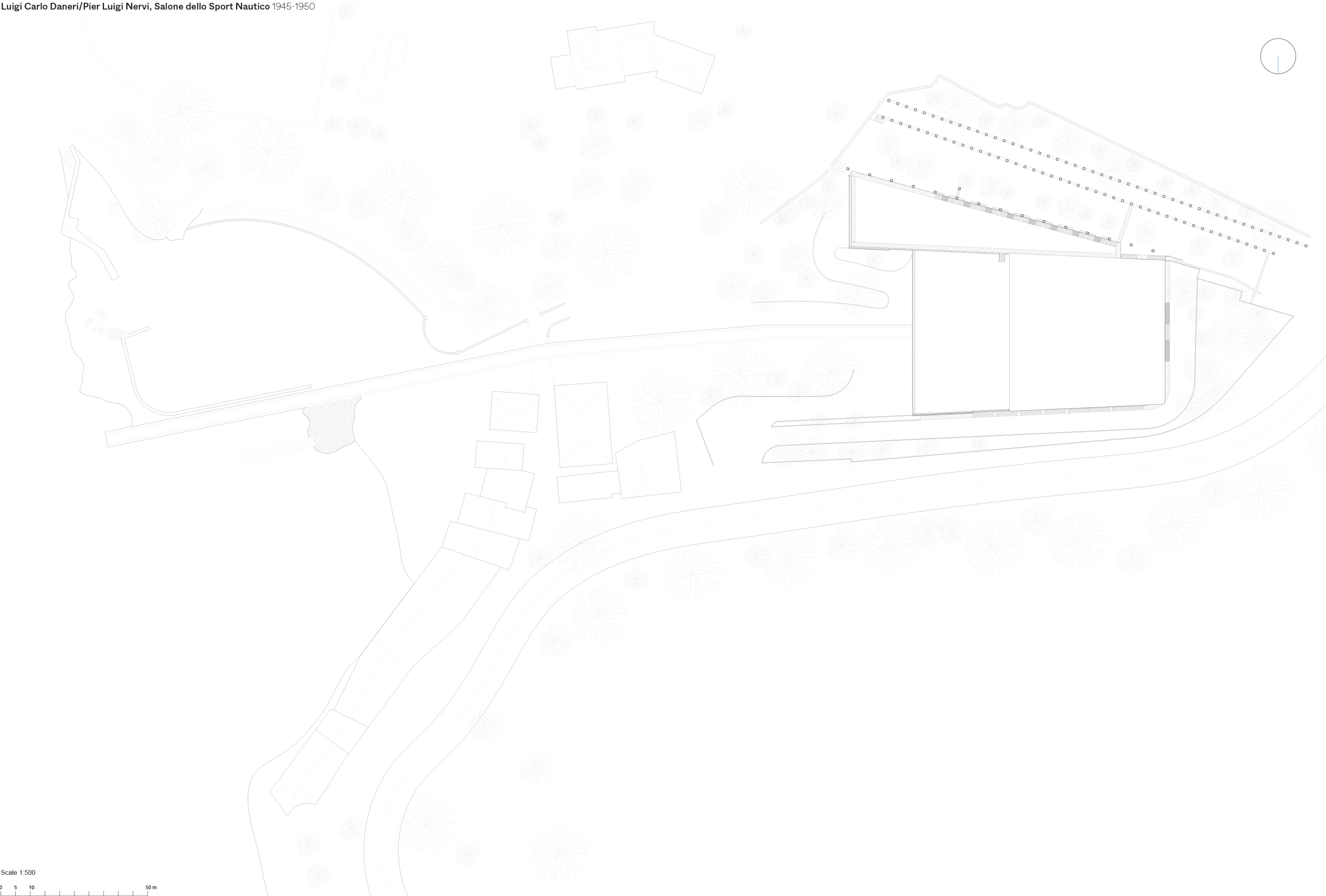
1948

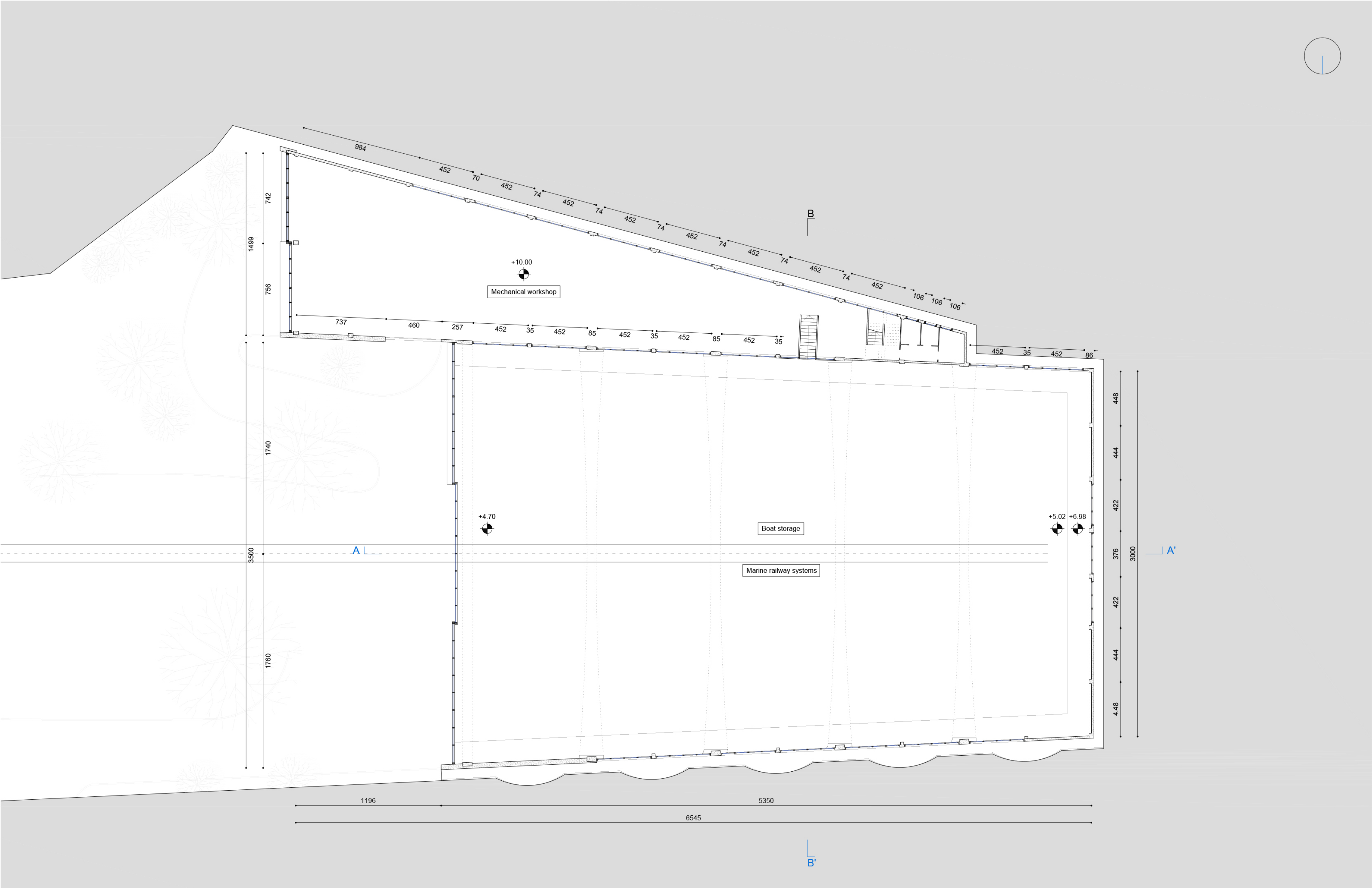
End of construction works

1950

Construction system

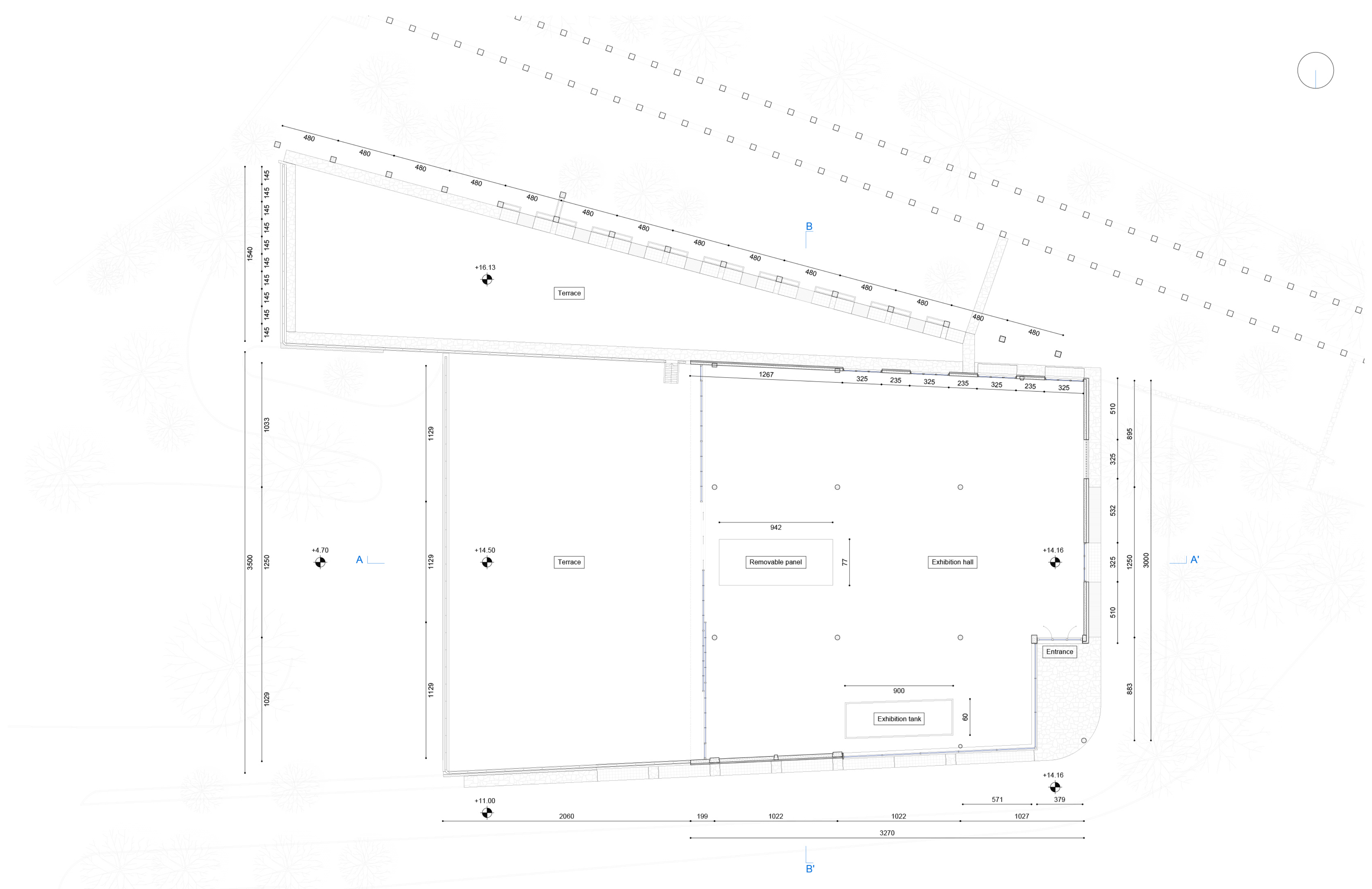
Structure made of reinforced concrete parabolic arches and ferroconcrete floors; envelope in local stone with glazed surfaces and timber window frames.



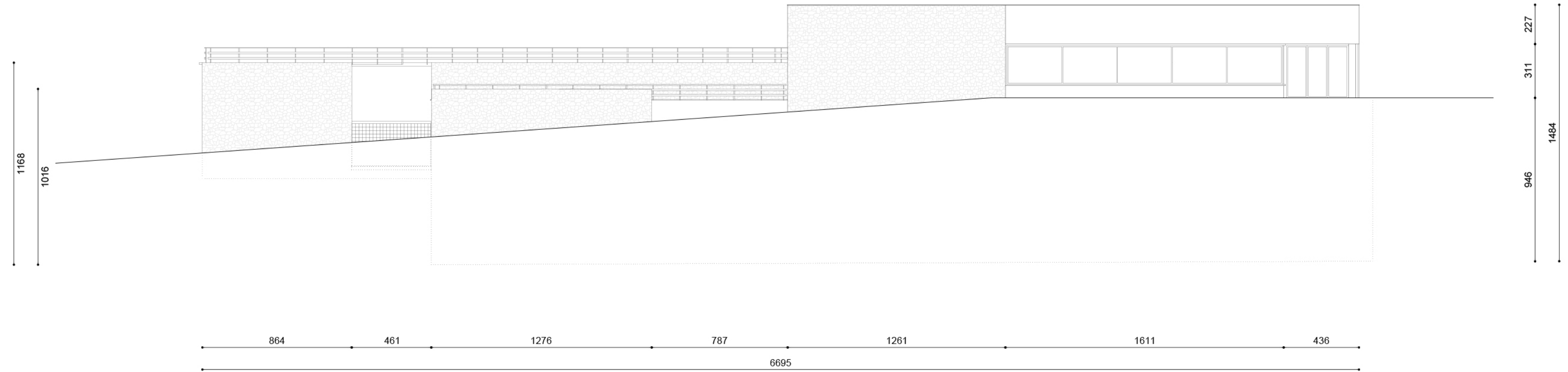


Basement floor
Scale 1:200

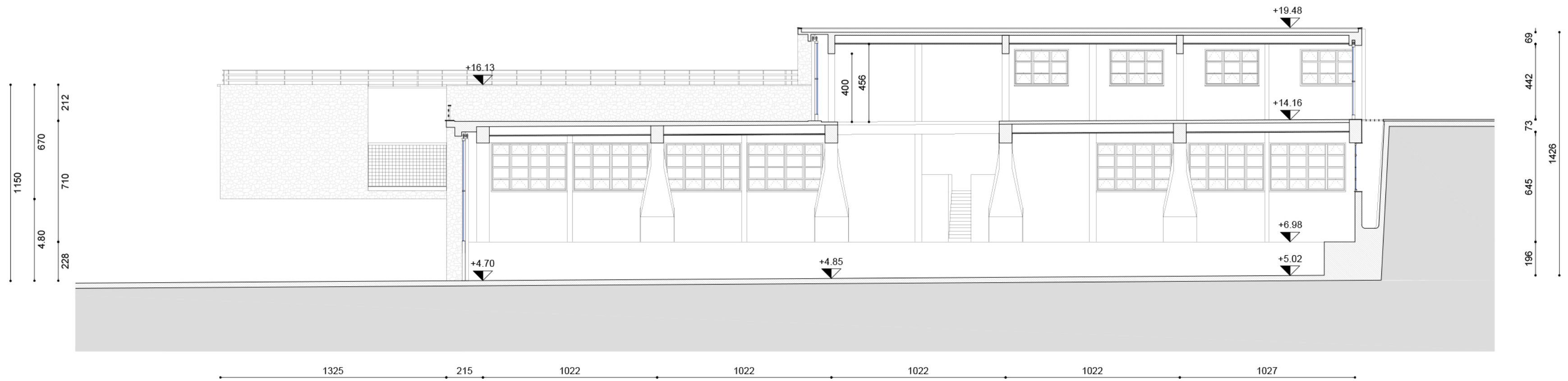
0 1 10 m

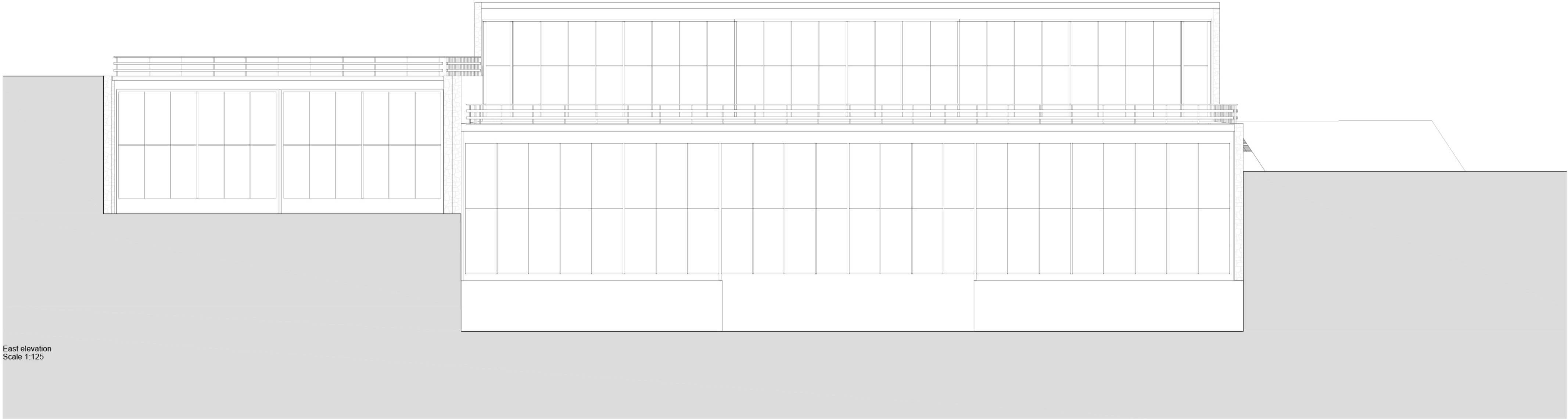


North elevation
Scale 1:200

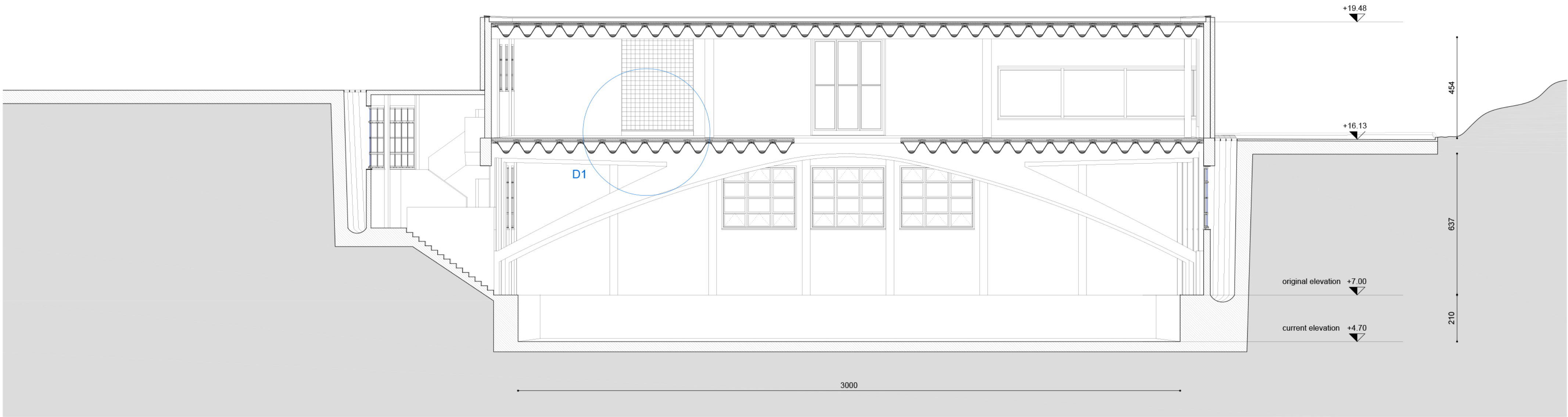


Section A-A'
Scale 1:200



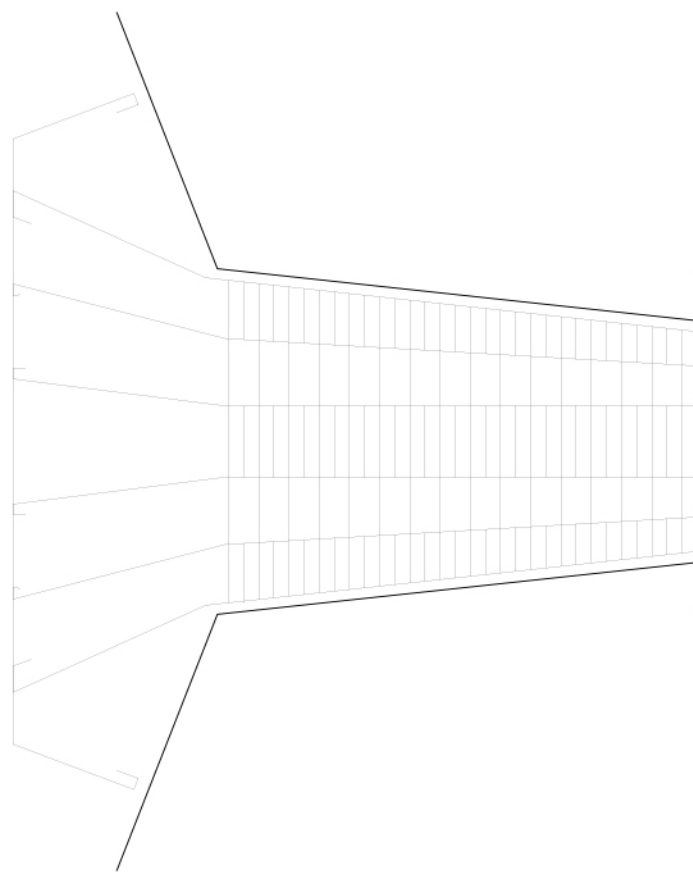


East elevation
Scale 1:125



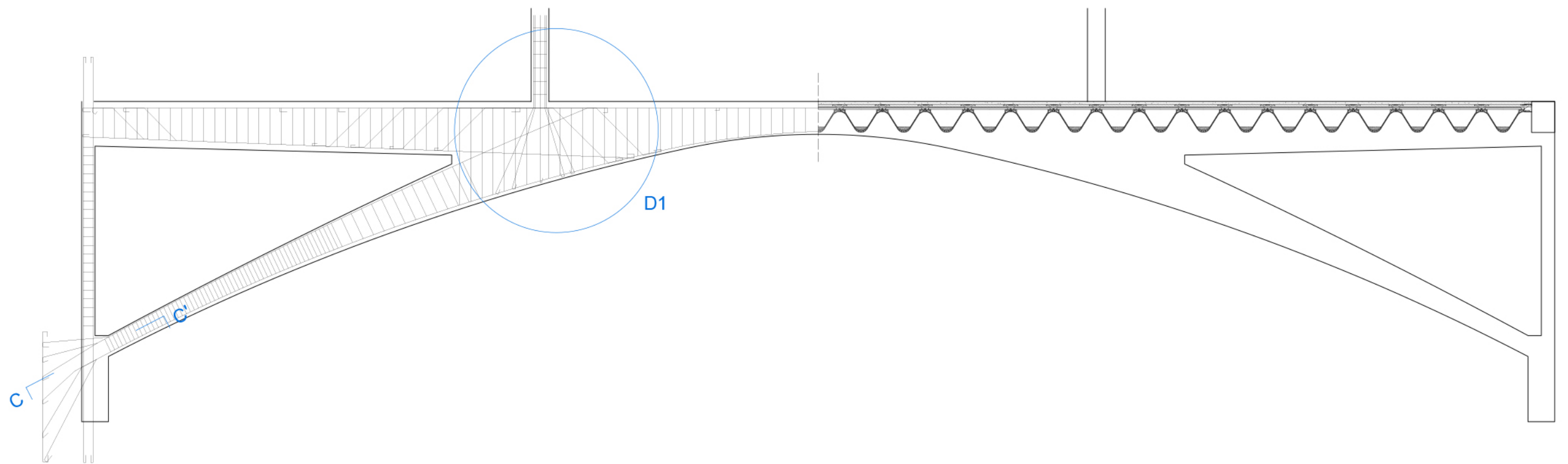
Section B-B'
Scale 1:125

0 1 2 10 m



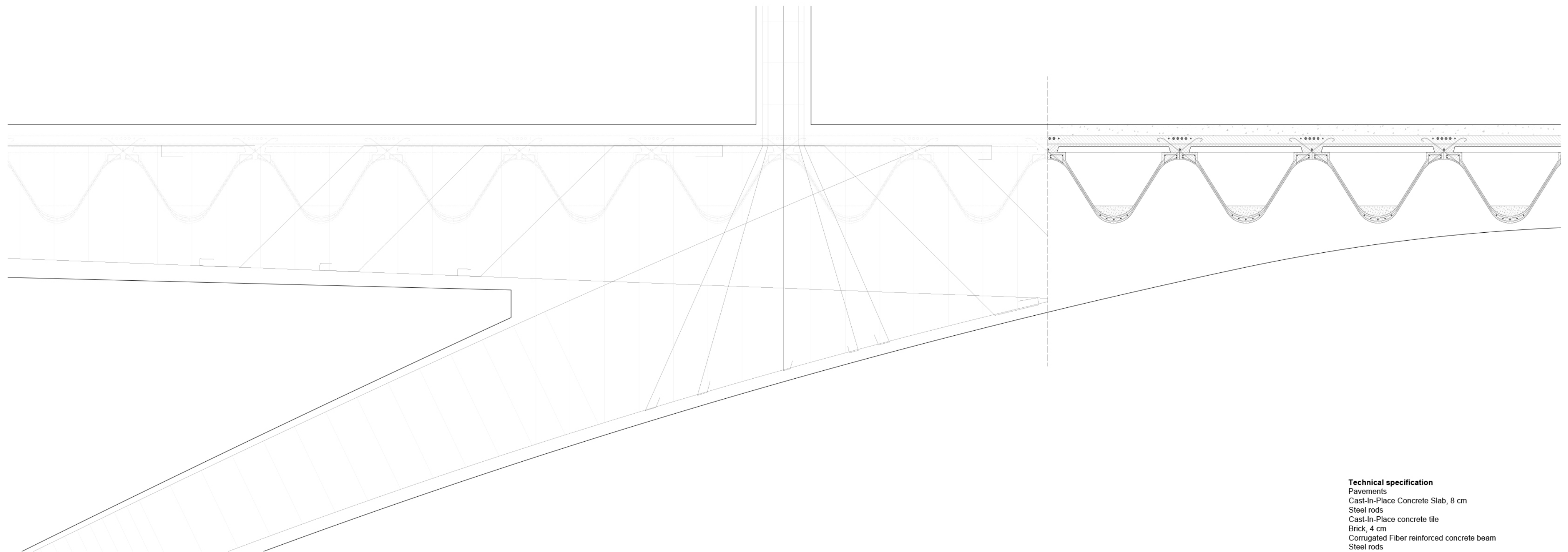
Section C-C'
Scale 1:50

0 50 100 250 cm



Structural Section
Scale 1:100

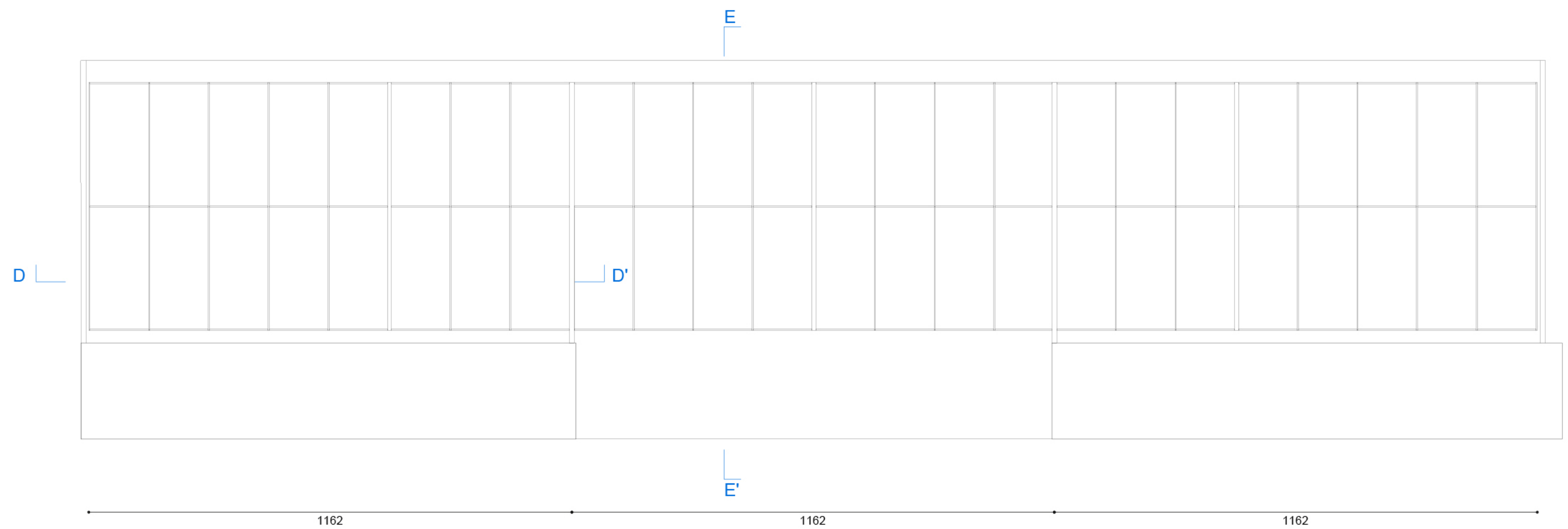
0 1 5 m



Detail D1
Scale 1:20

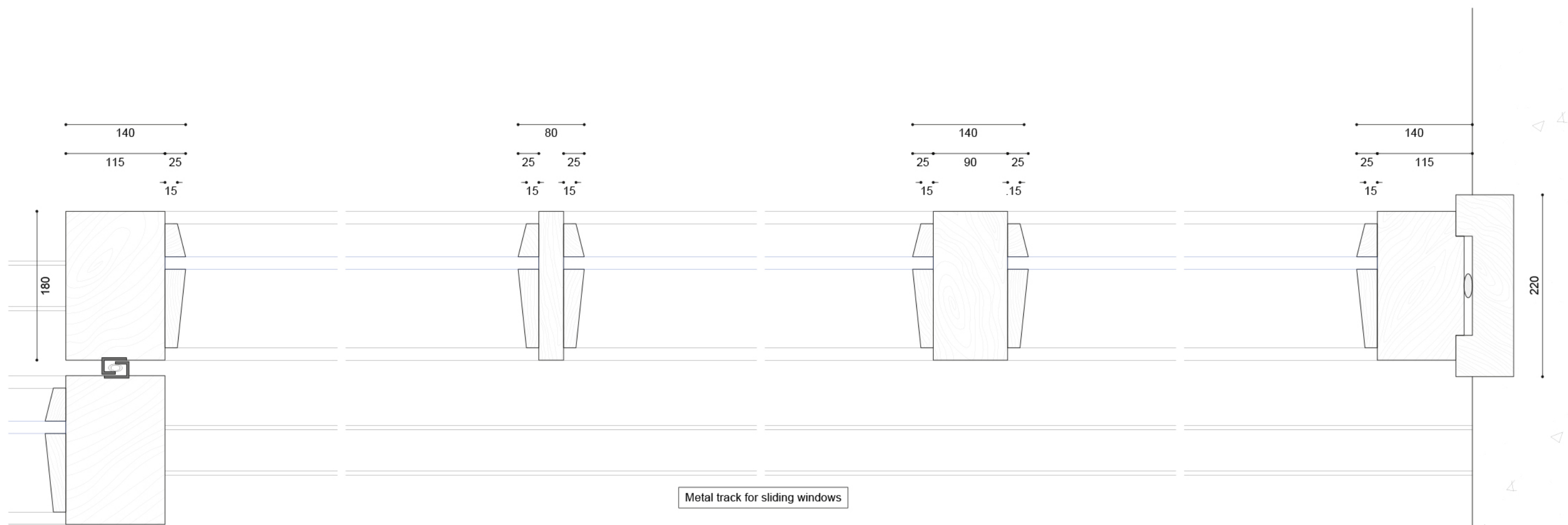
0 10 20 50 cm

Technical specification
 Pavements
 Cast-In-Place Concrete Slab, 8 cm
 Steel rods
 Cast-In-Place concrete tile
 Brick, 4 cm
 Corrugated Fiber reinforced concrete beam
 Steel rods



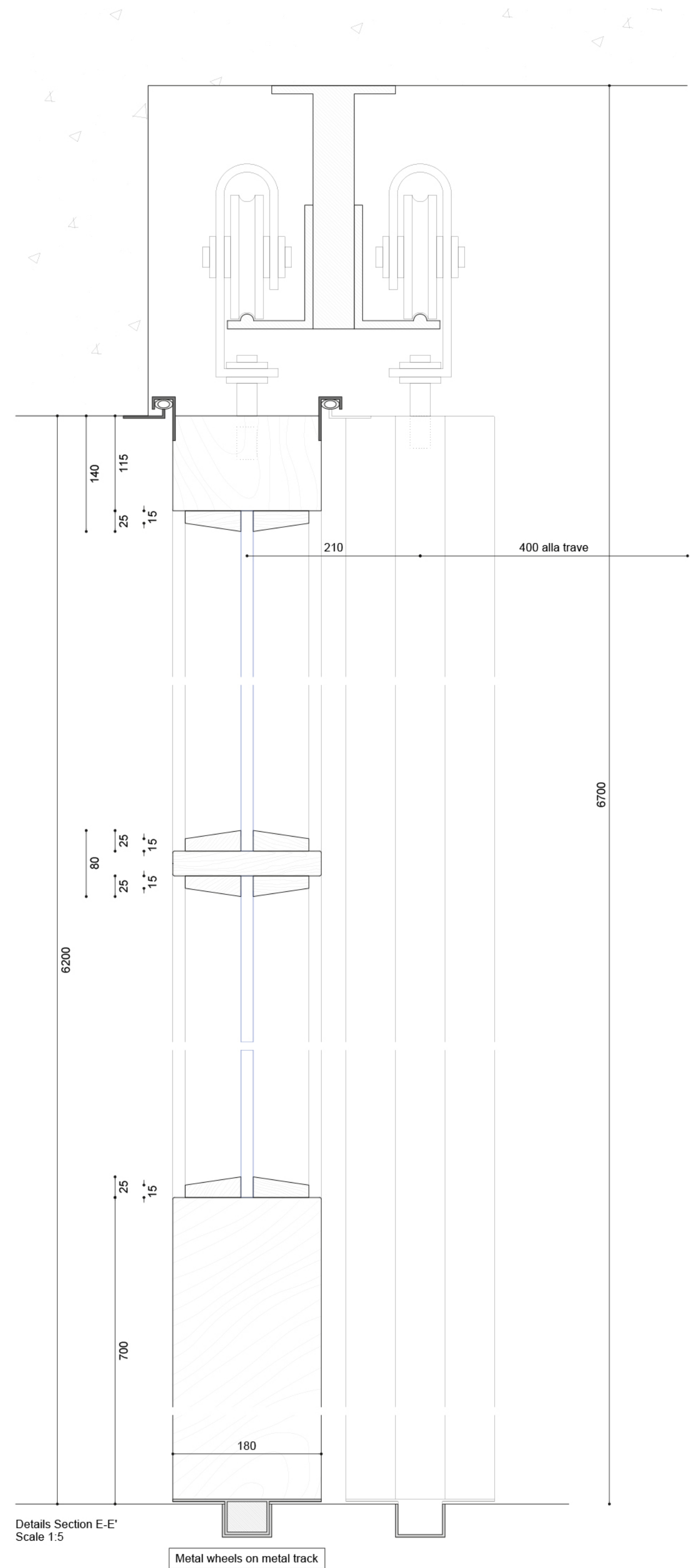
Elevation lower floor
Scale 1:100

0 1 2 10 m



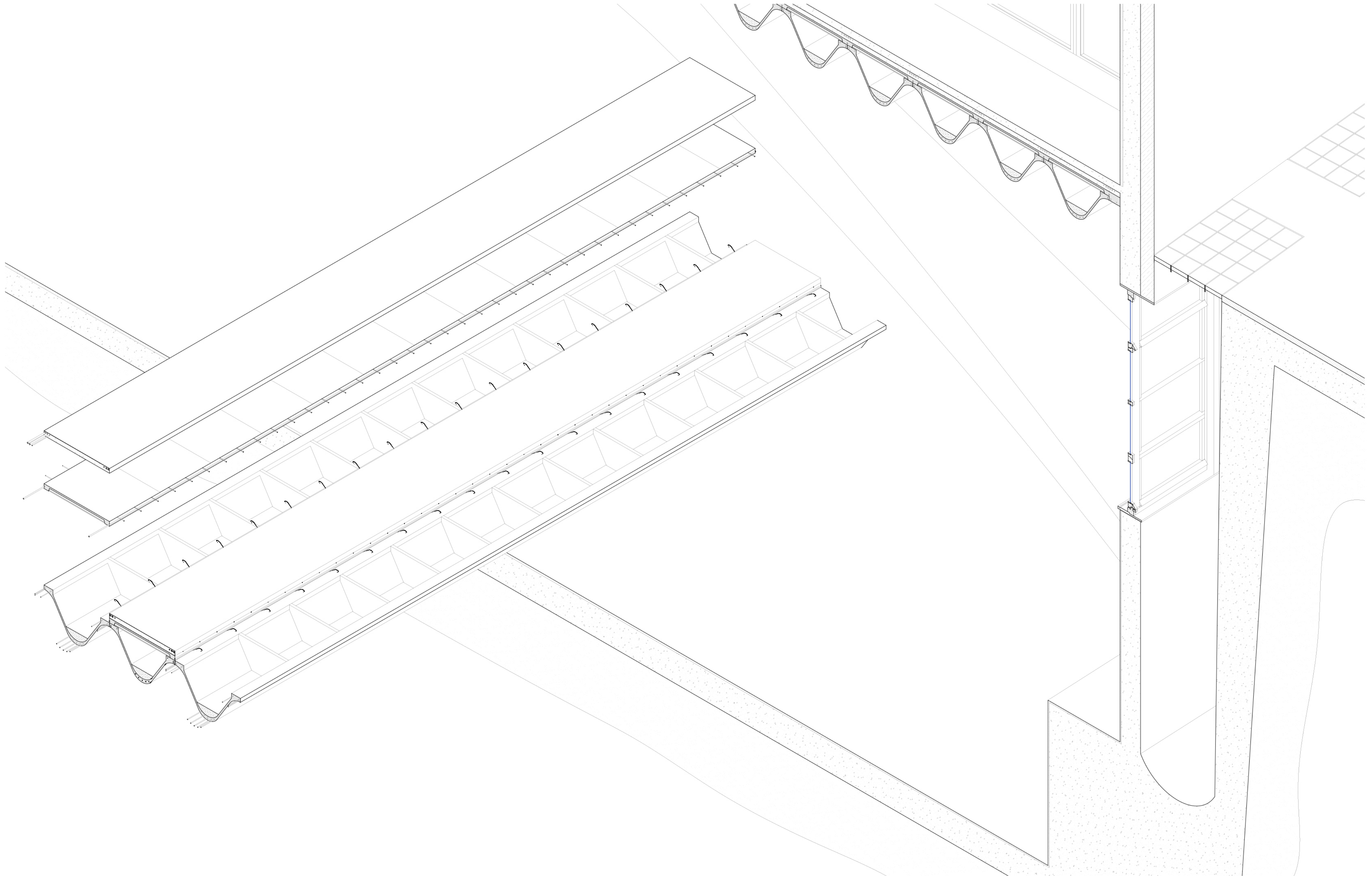
Section D-D'
Scale 1:5

0 10 20 50 cm



Details Section E-E'
Scale 1:5

Metal wheels on metal track



Axonometry
Scale 1:25

0 25 50 100 cm