

# Atlas of Details



## **Mario Ridolfi. Torri INA 1951-1955**

Author(s): Vincenzo Greco, Luca Zanovello

Copyright: © 2023 The Formwork

URL: <https://www.detailsinsection.org/projects/torri-ina>

---

All rights reserved. No part of this publication may be reproduced, distributed, or transmitted in any form or by any means, including photocopying, recording, or other electronic or mechanical methods, without the prior permission of the publisher. For permission requests regarding the partial or total reproduction of this item, write to the editor at the address below.

Please note: printing of this item for personal, noncommercial use is permitted. The graphic materials contained here have been produced for an optimised screen visualisation. For a good quality print, original full bleed sheet format (A2 horizontal) are to be maintained; inkjet plotting on opaque coated paper should be preferred.

Atlas of Details is a research project to demonstrate how insightful a section can be, in order to represent the complexity of the architectural artifact, since it allows the simultaneous perception of materiality and form, of building envelope and interior spaces. Atlas of Details is a project by The Formwork, an association established by professors and PhD candidates with diverse academic backgrounds (history, architectural design, technology, preservation) working at the IUAV University in Venice and at the Milan Politecnico. For more information about the Atlas of Details and The Formwork, please contact [info@theformwork.org](mailto:info@theformwork.org).

## **The Formwork**

Cultural association

Cannaregio 638,

30121 Venezia (VE)

<https://www.theformwork.org>

<https://www.detailsinsection.org>

[info@theformwork.org](mailto:info@theformwork.org)

# Mario Ridolfi

## Torri INA

1951-1955

### **Text**

Vincenzo Greco  
IUAV Venezia

### **Drawings**

Vincenzo Greco  
Luca Zanovello  
IUAV Venezia

### **Architect**

Mario Ridolfi (1904-1984)

### **Name of the building**

*Torri INA*

### **Site**

Viale Etiopia, Rome (IT)

### **Client**

*INA - Istituto Nazionale delle Assicurazioni*

### **Contractors**

Several local craft enterprises

### **Engineer**

Arrigo Carè (1919-2004)

### **Other actors**

Volfango Frankl (1907-1994)

### **Decorations**

Mario Ridolfi (drawing and design of majolica and glass-cement elements)

### **Building permit**

1949 january: first project hypotheses;  
1949 may: elaboration of the final project;  
1949 july: presentation of the project for the approval of the municipality;  
1950 july: assignment for the executive design of lot II;  
1950 november: executive project delivery;  
1951 february: release of the building permit

### **Start of construction works**

1951 april: start of construction works on lot II and continuation of the executive design

### **Intermediate stages**

1952 april-august: planning of lot III (5 blocks);  
1952 may: completion of the roofs of lot II;  
1942 november: completion of the lot III project;  
1953 january: completion of the works on lot II;  
1953 march: presentation of the III project for municipal approval;  
1953 april: completion of lot II shops and start of lot III works

### **End of construction works**

1954 september: official end of works;  
1955 february: completion of the arrangements for the gardens and avenues

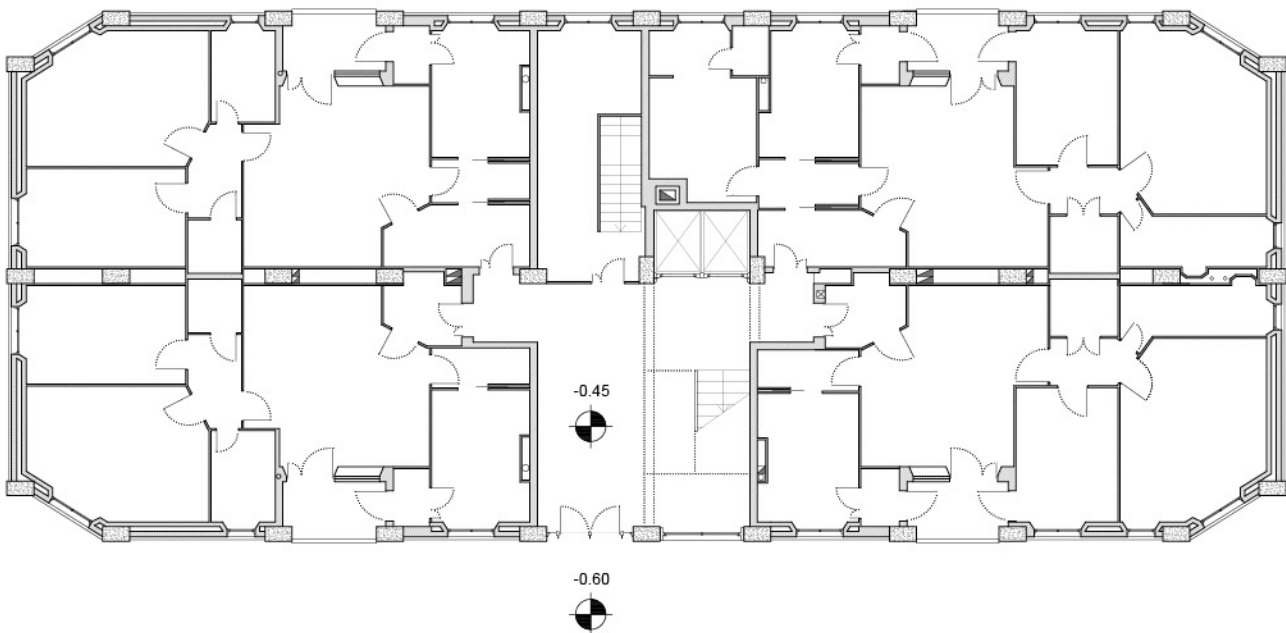
### **Construction system**

Modular load-bearing system with reinforced concrete beams, wpillars and masonry floors. The external walls are made of brick with decorative majolica on the façade. The fixtures are made entirely of wood to the architect's design as are the circular glass-cement elements that illuminate the stairs.

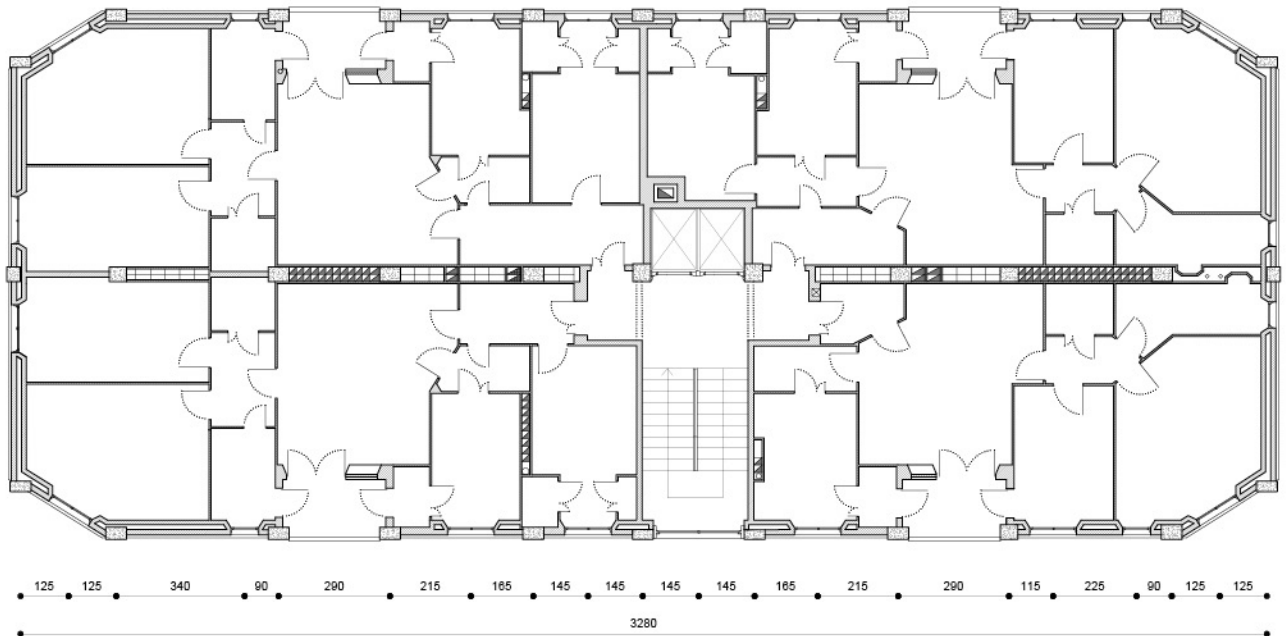


Masterplan  
Scale 1:550

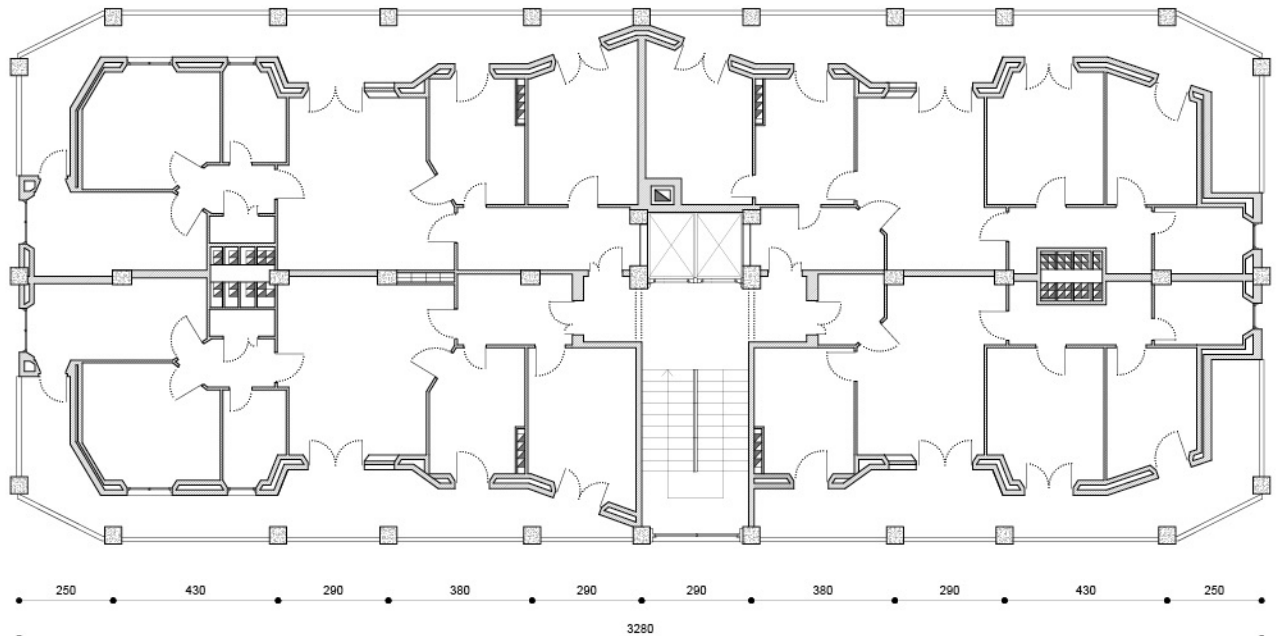
Ground floor plan  
Scale 1:200



Floor type plan  
Scale 1:200

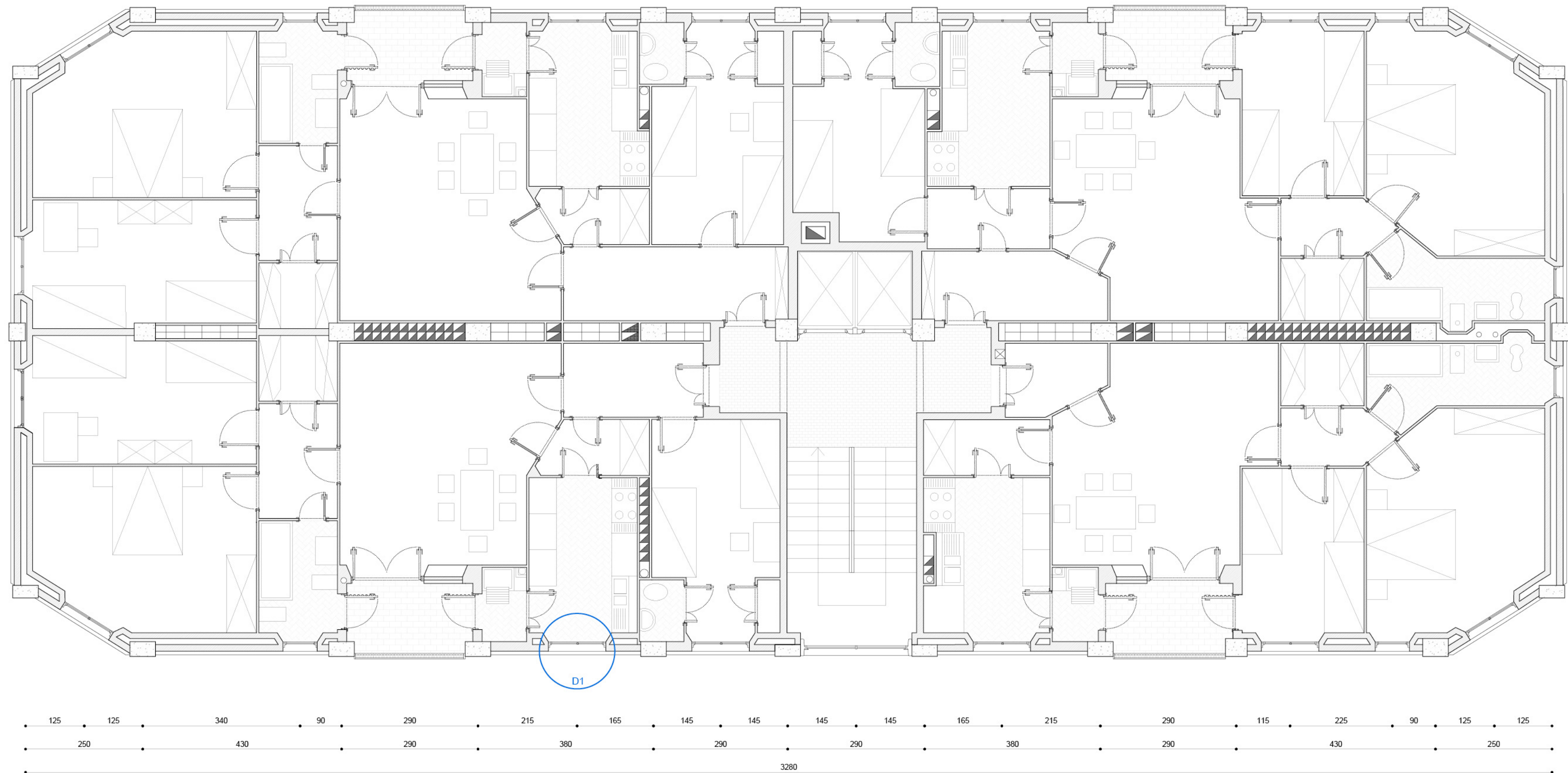


Re-entrant floor plan  
Scale 1:200



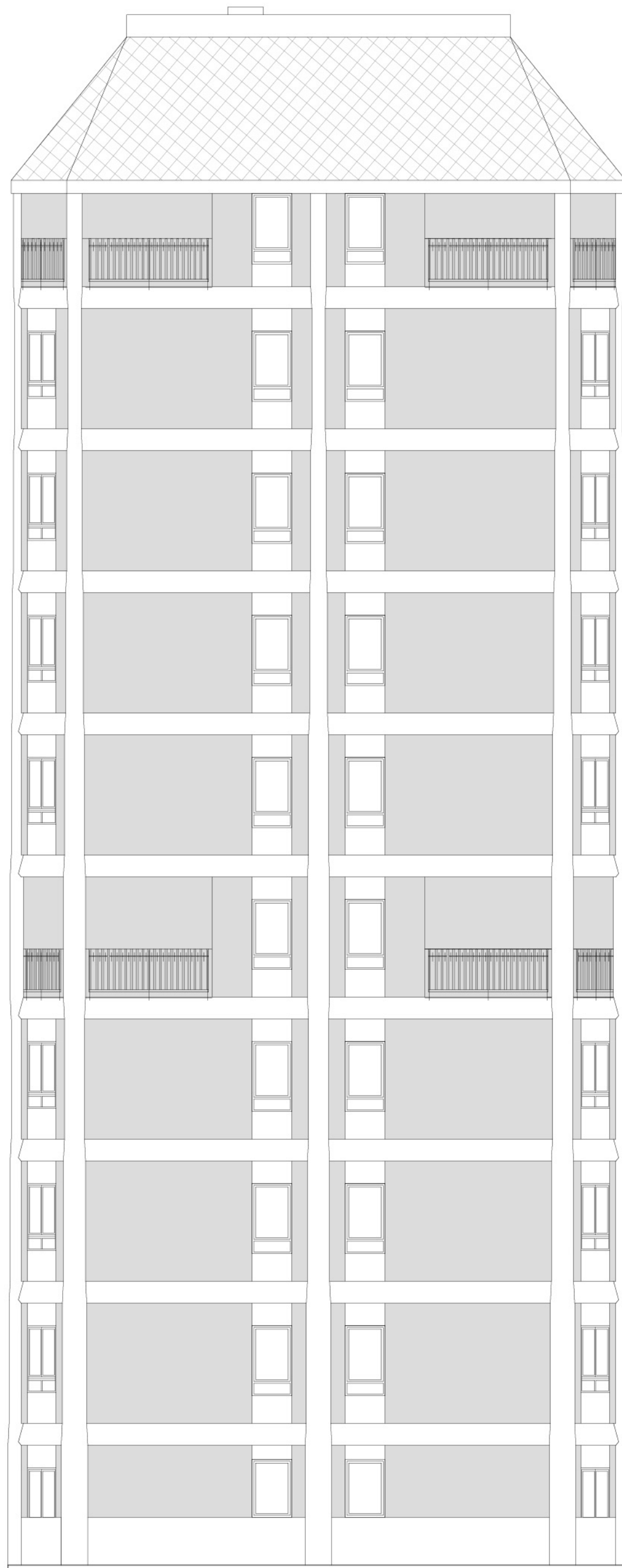
Scale 1:200



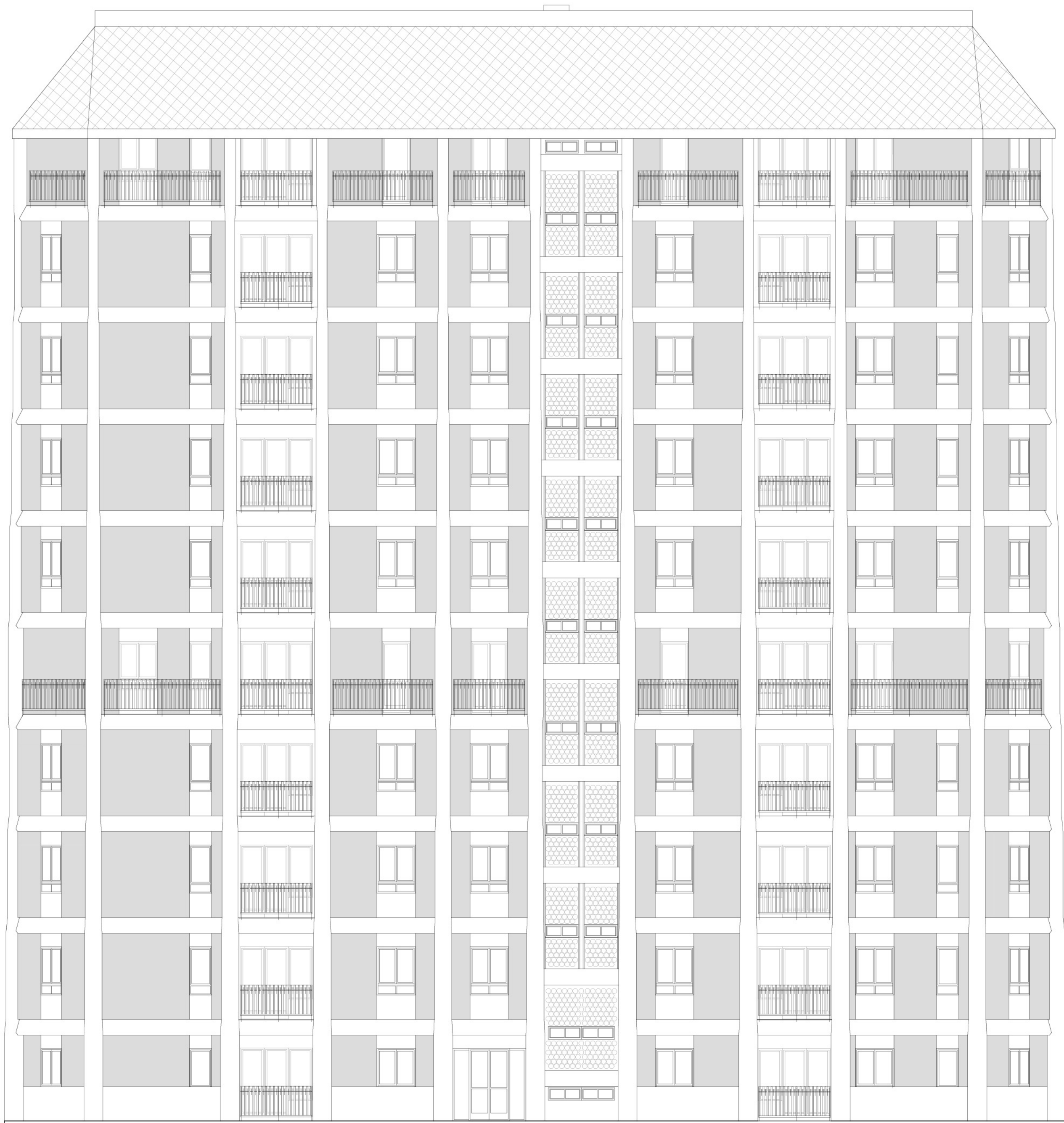


Floor type plan  
Scale 1:75

0 1 5 m

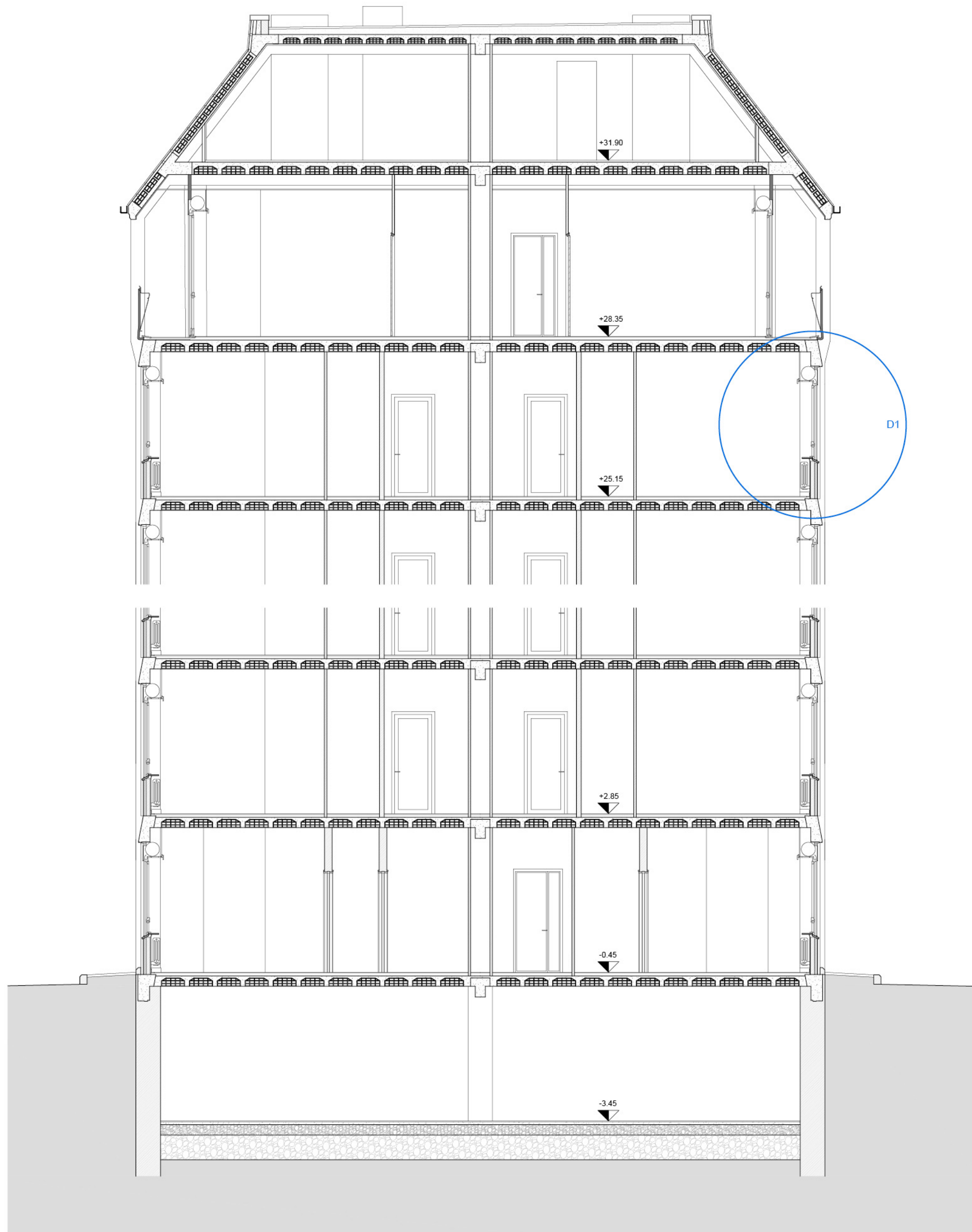


Elevations  
Scale 1:100

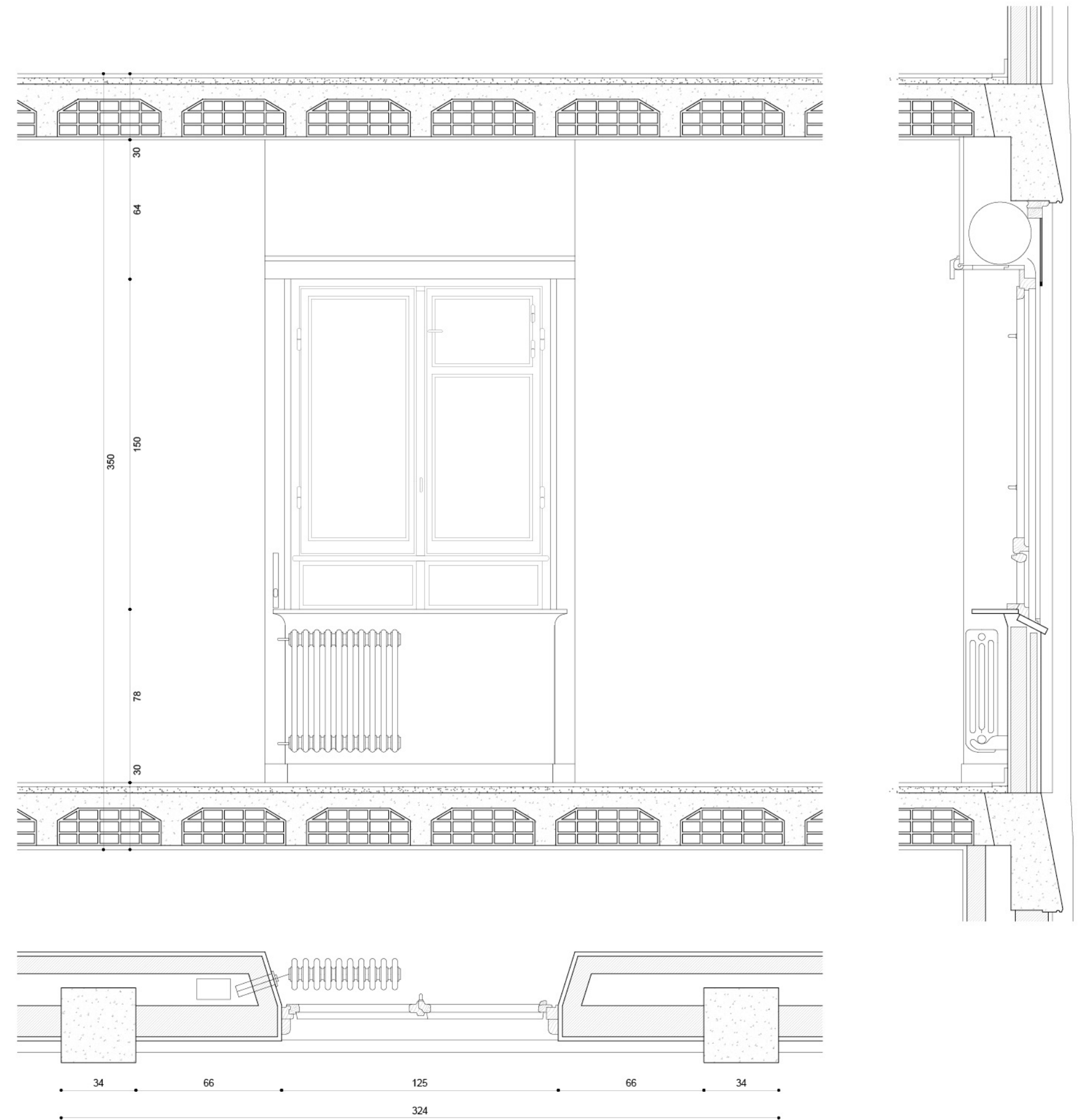


West elevation





AA' Cross section  
Scale 1:75



D1. Window detail  
Scale 1:20

