

Atlas of Details



João Batista Vilanova Artigas. Casa Bettega 1949

Author(s): Giovanni Dal Col

Copyright: © 2023 The Formwork

URL: <https://www.detailsinsection.org/archives/projects/casa-bettega>

All rights reserved. No part of this publication may be reproduced, distributed, or transmitted in any form or by any means, including photocopying, recording, or other electronic or mechanical methods, without the prior permission of the publisher. For permission requests regarding the partial or total reproduction of this item, write to the editor at the address below.

Please note: printing of this item for personal, noncommercial use is permitted. The graphic materials contained here have been produced for an optimised screen visualisation. For a good quality print, original full bleed sheet format (A2 horizontal) are to be maintained; inkjet plotting on opaque coated paper should be preferred.

Atlas of Details is a research project to demonstrate how insightful a section can be, in order to represent the complexity of the architectural artifact, since it allows the simultaneous perception of materiality and form, of building envelope and interior spaces. Atlas of Details is a project by The Formwork, an association established by professors and PhD candidates with diverse academic backgrounds (history, architectural design, technology, preservation) working at the IUAV University in Venice and at the Milan Politecnico. For more information about the Atlas of Details and The Formwork, please contact info@theformwork.org.

The Formwork

Cultural association

Cannaregio 638,

30121 Venezia (VE)

<https://www.theformwork.org/staging>

<https://www.detailsinsection.org/staging>

info@theformwork.org

João Batista Vilanova
Artigas
Casa Bettega
1949

Text

Giovanni Dal Col
IUAV Venezia

Drawings

Giovanni Dal Col
IUAV Venezia

Architect

João Batista Vilanova Artigas

Name of the building

Casa Bettega

Site

Rua da Paz, Curitiba, PR, Brazil

Client

João Luiz Bettega

Start of construction works

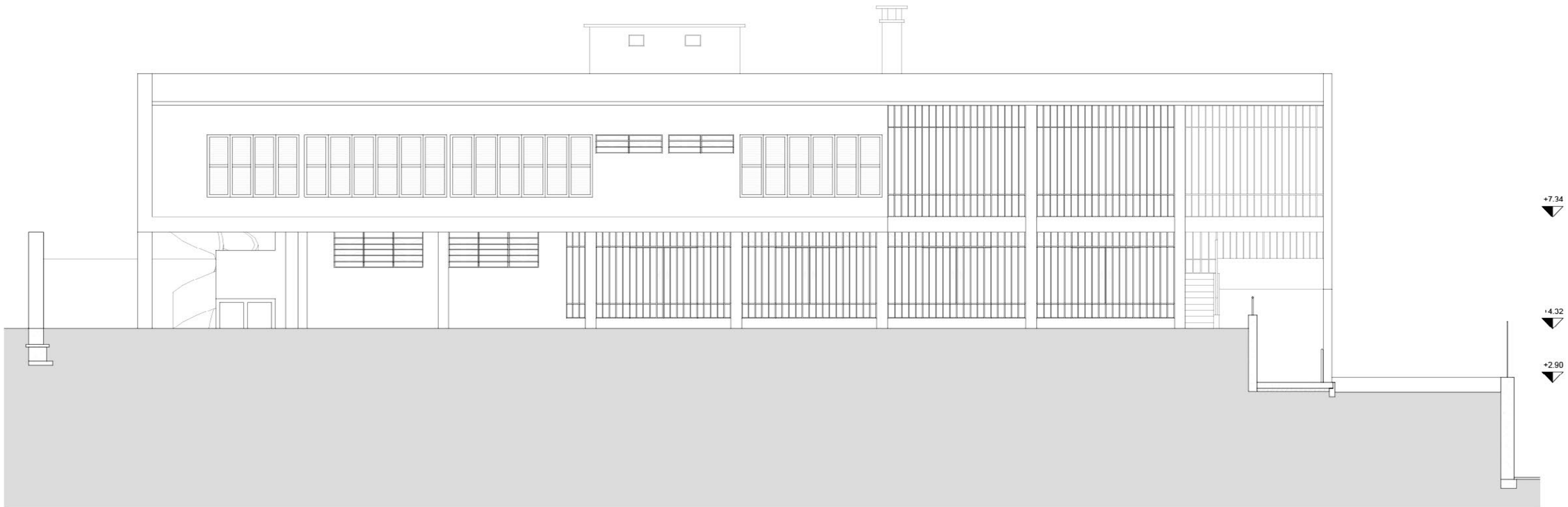
1949

Project variations

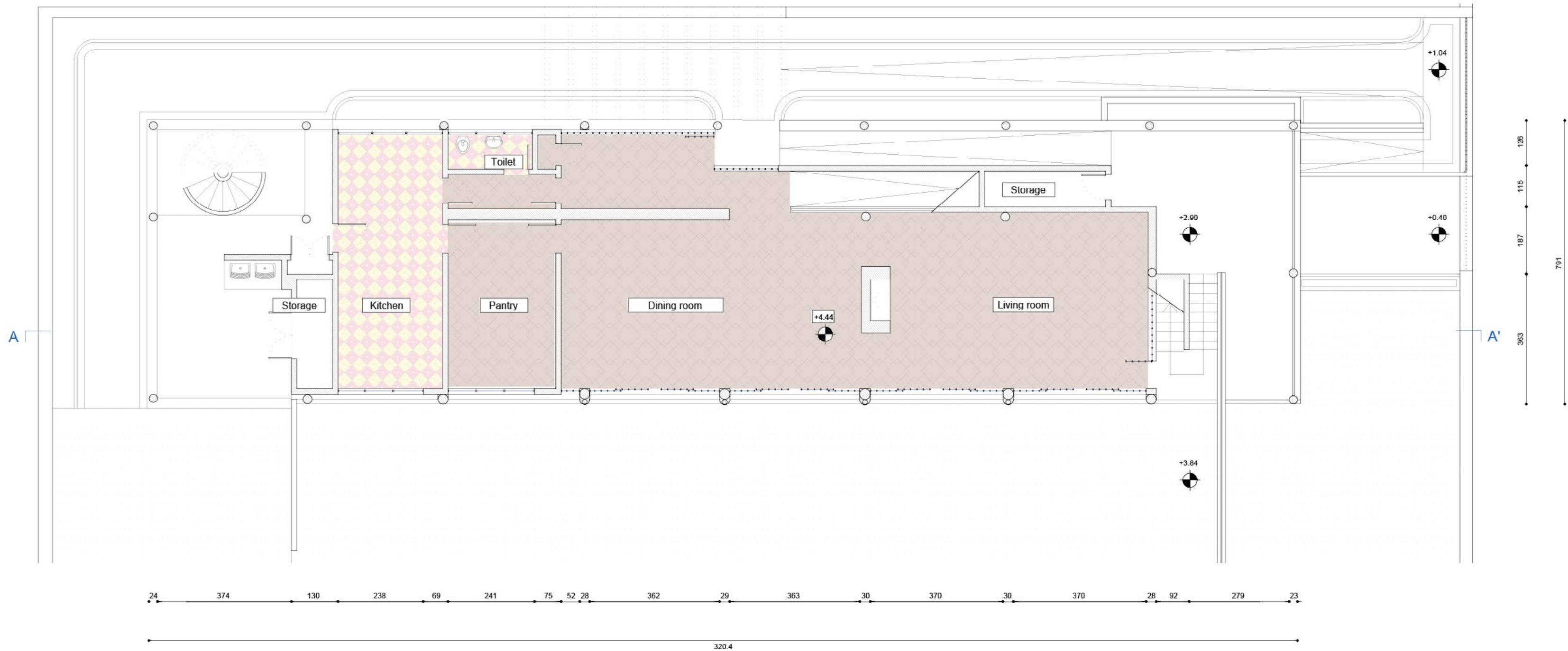
2002-2004 conservative restoration

End of construction works

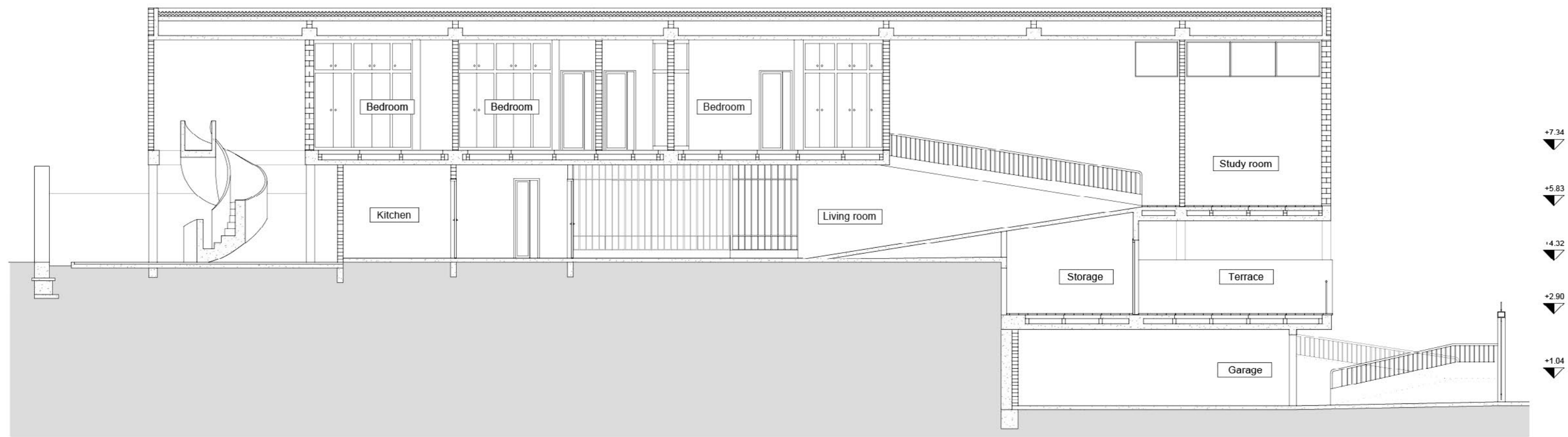
1953



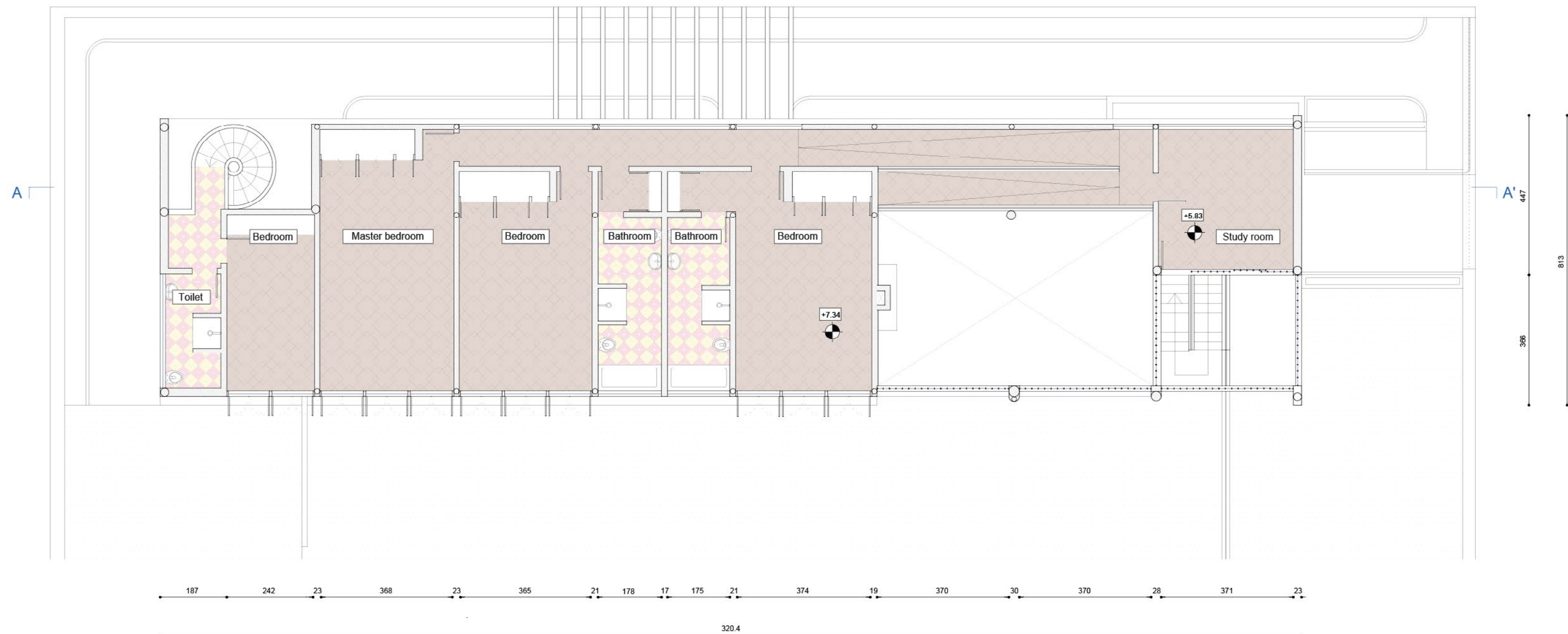
North-west elevation
Scale 1:100



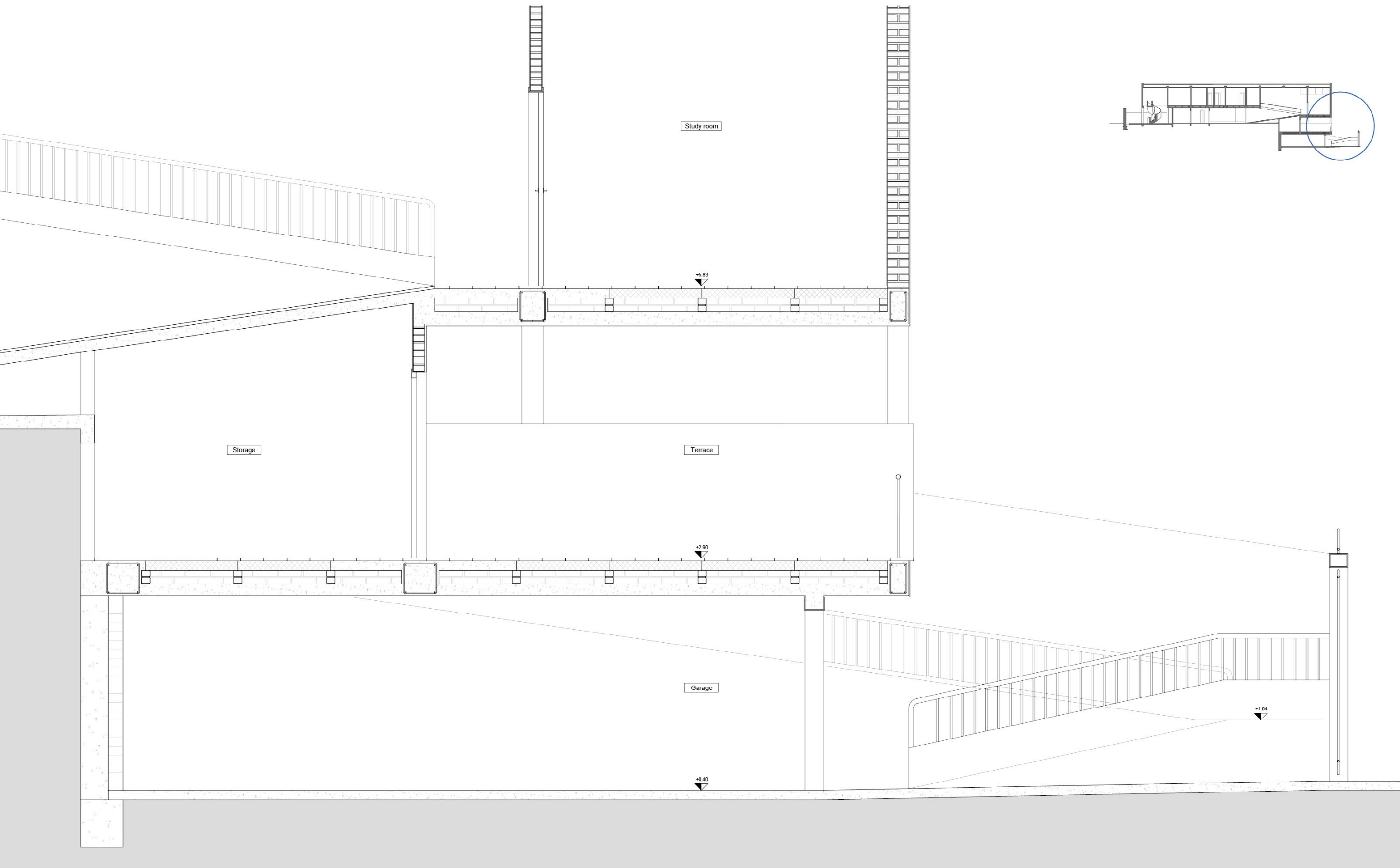
Ground floor plan
Scale 1:100



Section AA'
Scale 1:100

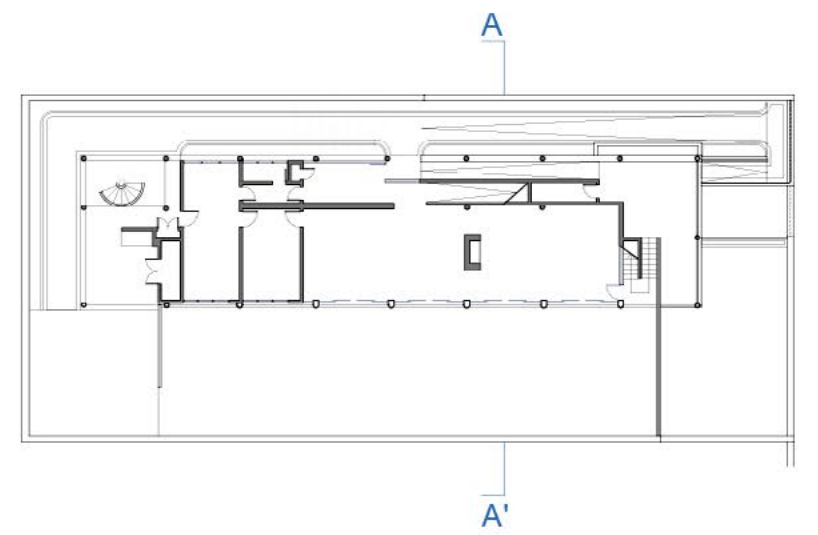
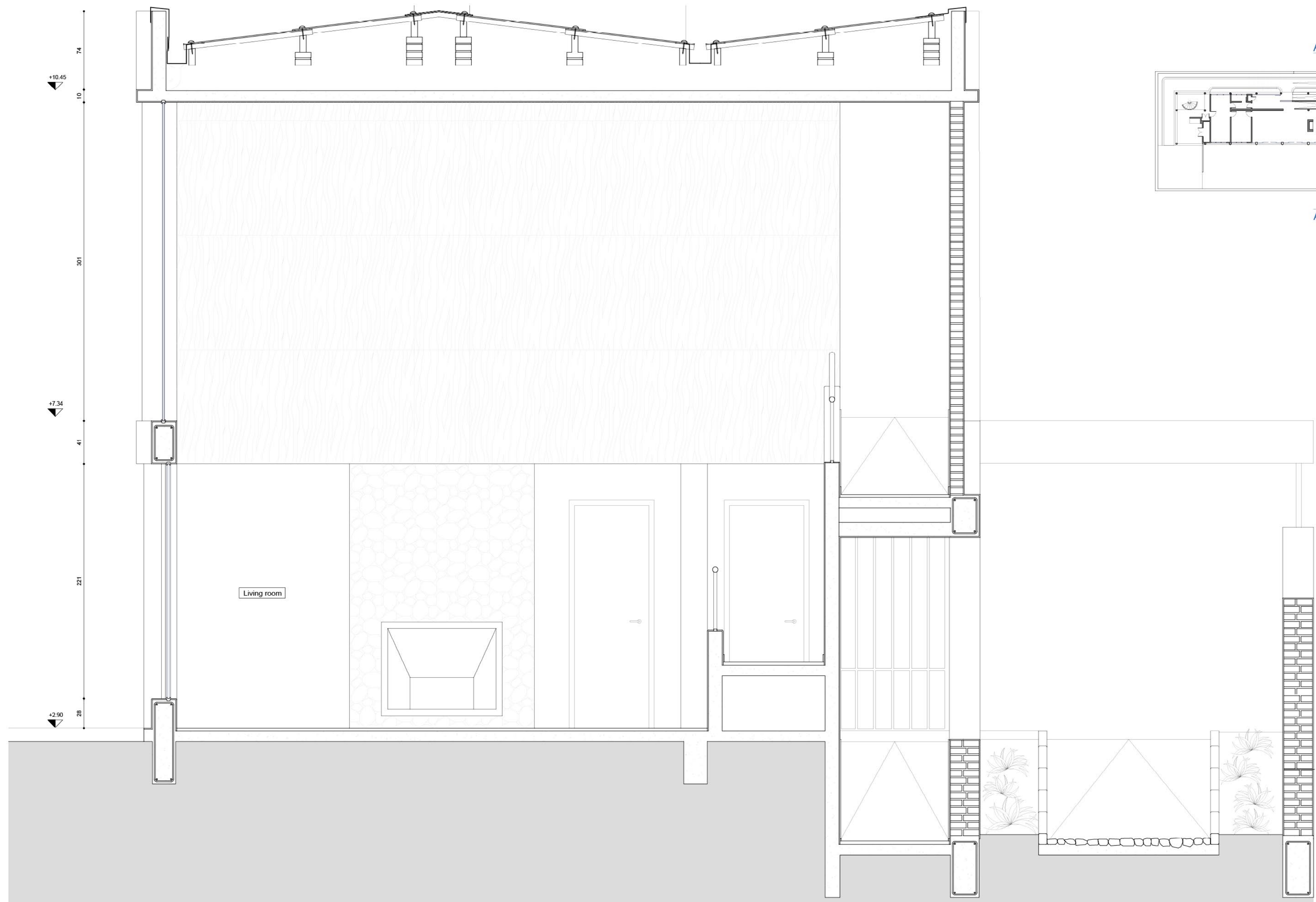


1st Floor plan
Scale 1:100



Extract of longitudinal section
Scale 1:25





Extract of longitudinal section
Scale 1:25

