

# Atlas of Details



## Studio Albini-Helg. Complesso degli Eremitani 1969-1979

Author(s): Giorgia Sala, Francesco Antonio Bragagna

Copyright: © 2023 The Formwork

URL: <https://www.detailsinsection.org/archives/projects/museo-degli-eremitani>

---

All rights reserved. No part of this publication may be reproduced, distributed, or transmitted in any form or by any means, including photocopying, recording, or other electronic or mechanical methods, without the prior permission of the publisher. For permission requests regarding the partial or total reproduction of this item, write to the editor at the address below.

Please note: printing of this item for personal, noncommercial use is permitted. The graphic materials contained here have been produced for an optimised screen visualisation. For a good quality print, original full bleed sheet format (A2 horizontal) are to be maintained; inkjet plotting on opaque coated paper should be preferred.

Atlas of Details is a research project to demonstrate how insightful a section can be, in order to represent the complexity of the architectural artifact, since it allows the simultaneous perception of materiality and form, of building envelope and interior spaces. Atlas of Details is a project by The Formwork, an association established by professors and PhD candidates with diverse academic backgrounds (history, architectural design, technology, preservation) working at the IUAV University in Venice and at the Milan Politecnico. For more information about the Atlas of Details and The Formwork, please contact [info@theformwork.org](mailto:info@theformwork.org).

### The Formwork

Cultural association

Cannaregio 638,

30121 Venezia (VE)

<https://www.theformwork.org/staging>

<https://www.detailsinsection.org/staging>

[info@theformwork.org](mailto:info@theformwork.org)

# Studio Albini-Helg

# Complesso degli

# Eremitani

1969-1979

**Text**

Giorgia Sala  
IUAV Venezia

**Drawings**

Giorgia Sala  
Francesco Antonio Bragagna  
IUAV Venezia

**Architect**

Franco Albini (1905-1977), Franca Helg (1920-1989)

**Name of the building**

Museo Civico degli Eremitani

**Site**

Piazza Eremitani, Padova (Italia)

**Client**

Padova Municipality

**Other actors**

Marco Albini, Antonio Piva

**Design phase**

1969-1974

**Start of construction works**

1976

**Project steps**

March 1969: first design solutions

June 1969: preliminary project for the Museo Civico, which envisioned preservation works for the main cloister and the construction of new architectures (reconstruction of the secondary cloister, with new shapes and materials, a pinakothek, and an access building located next to the churchyard); the pinakothek project is presented to the Municipal Council and is rejected.

July 1969: the Museo Civico project is presented to the Soprintendenza

November 1969 - January 1970: new solution for the pinakothek

January 1970: new solution for the access building

April 1970: the Municipal Council rejects the pinakothek and access building solutions

November 1970: definitive project for the pinakothek (unbuilt)

April 1971 - May 1974: ulterior variations for the museum access building

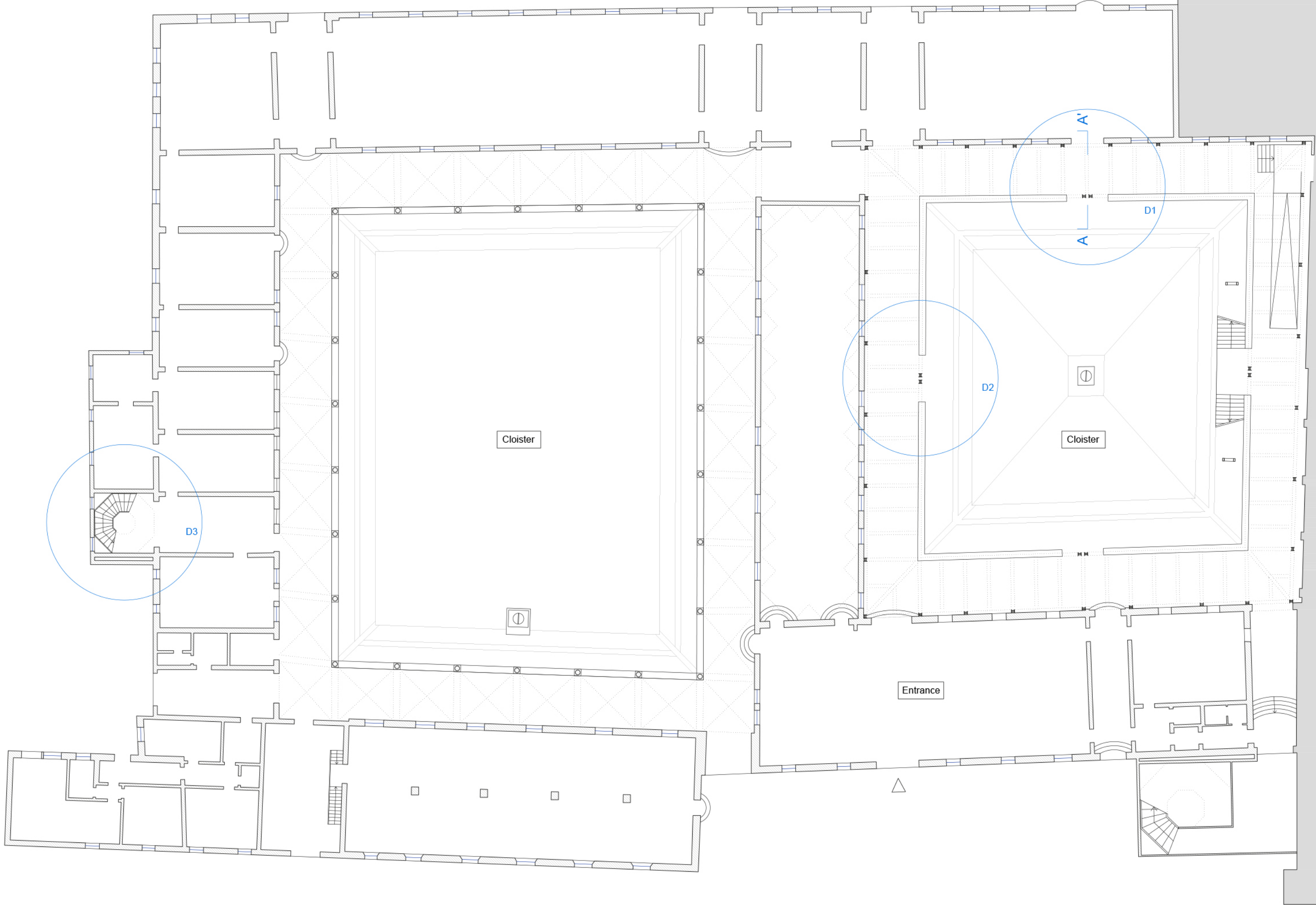
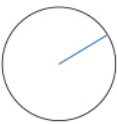
1996: the museum access building is demolished and will never be completed.

**End of construction works**

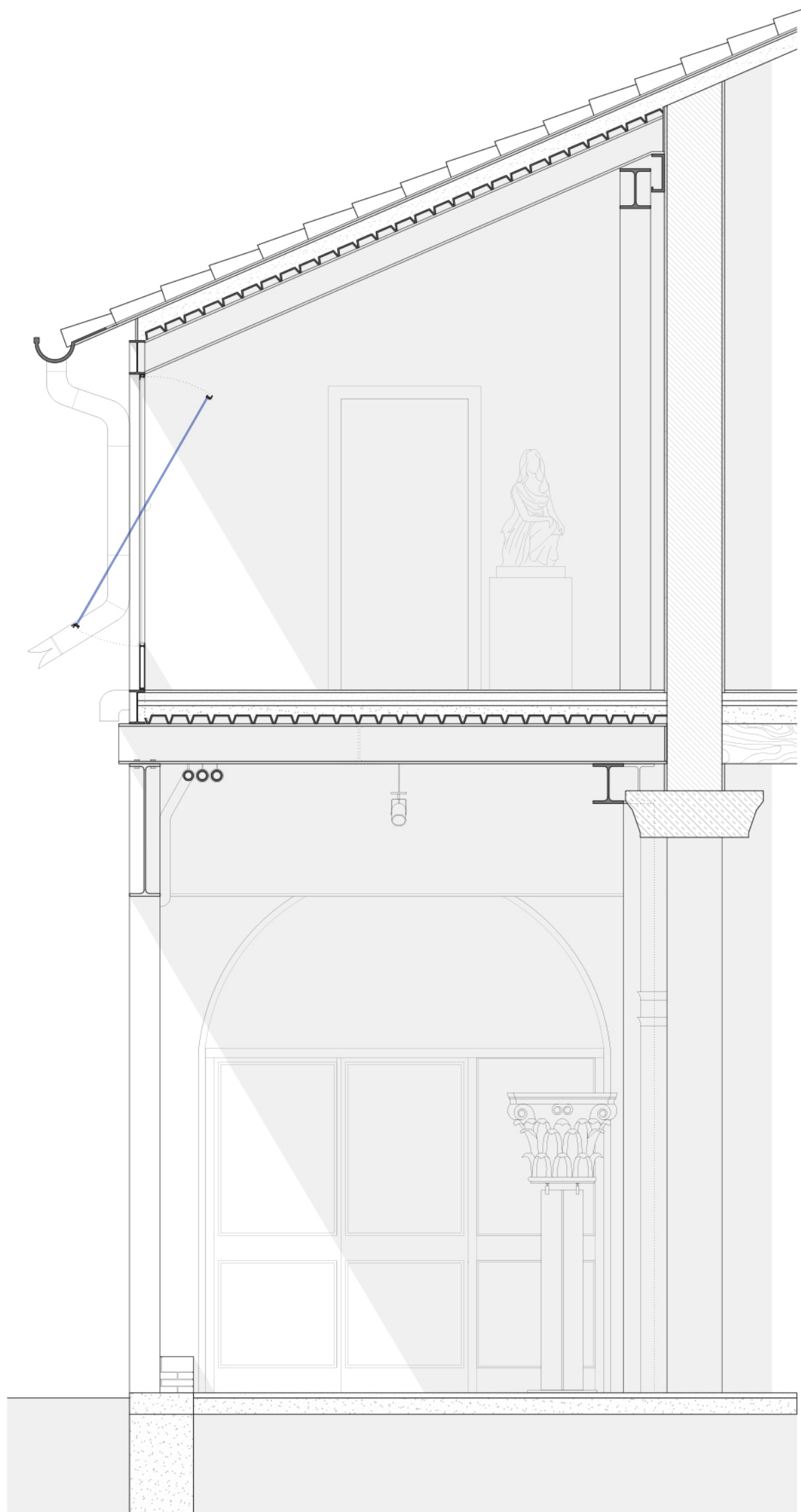
1986

**Construction system**

Preservation works on the main cloister with traditional techniques; reconstruction of the secondary cloister with a steel frame structure.

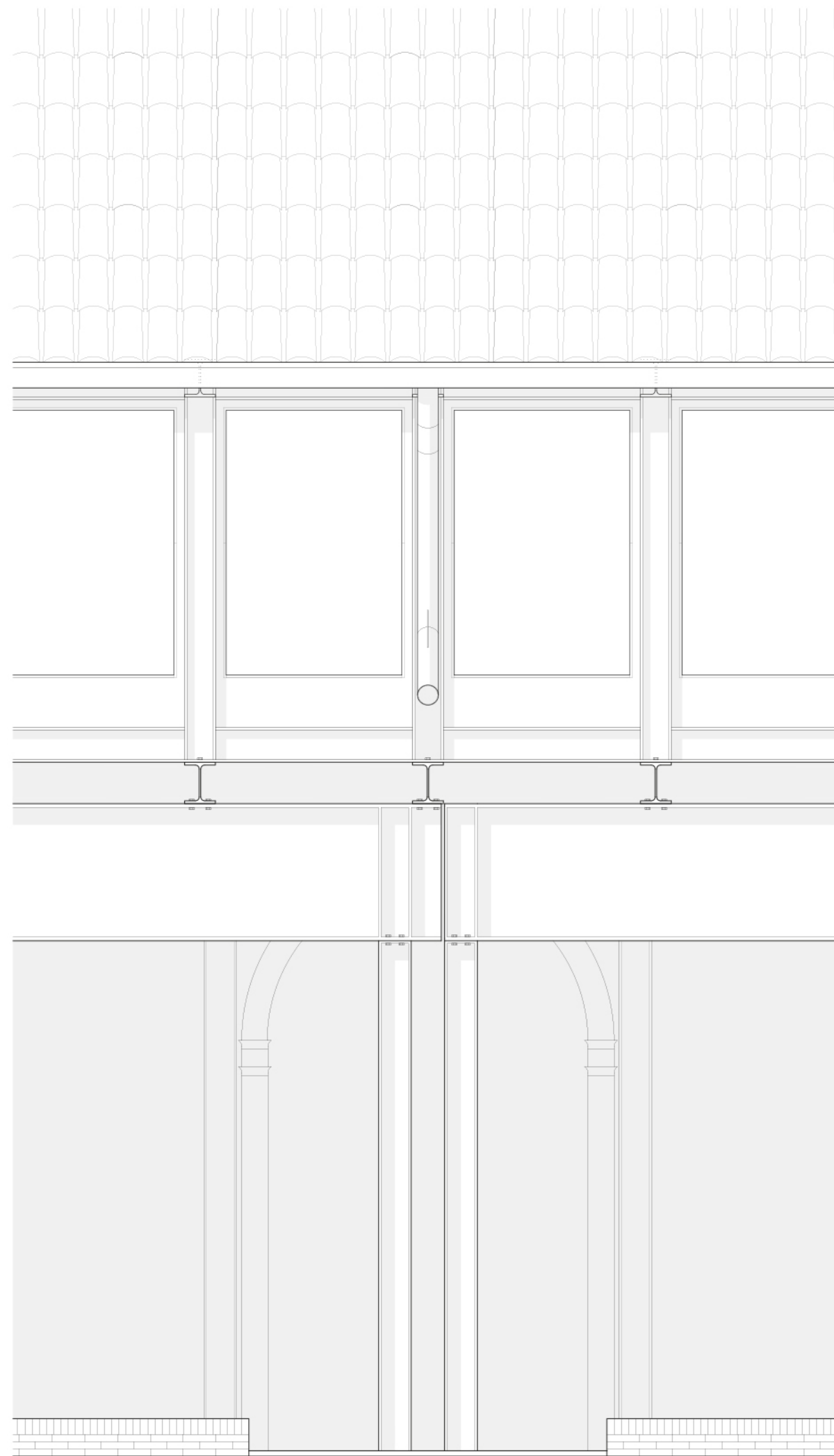


Groundfloor  
Scale 1:250  
0 1 10 m

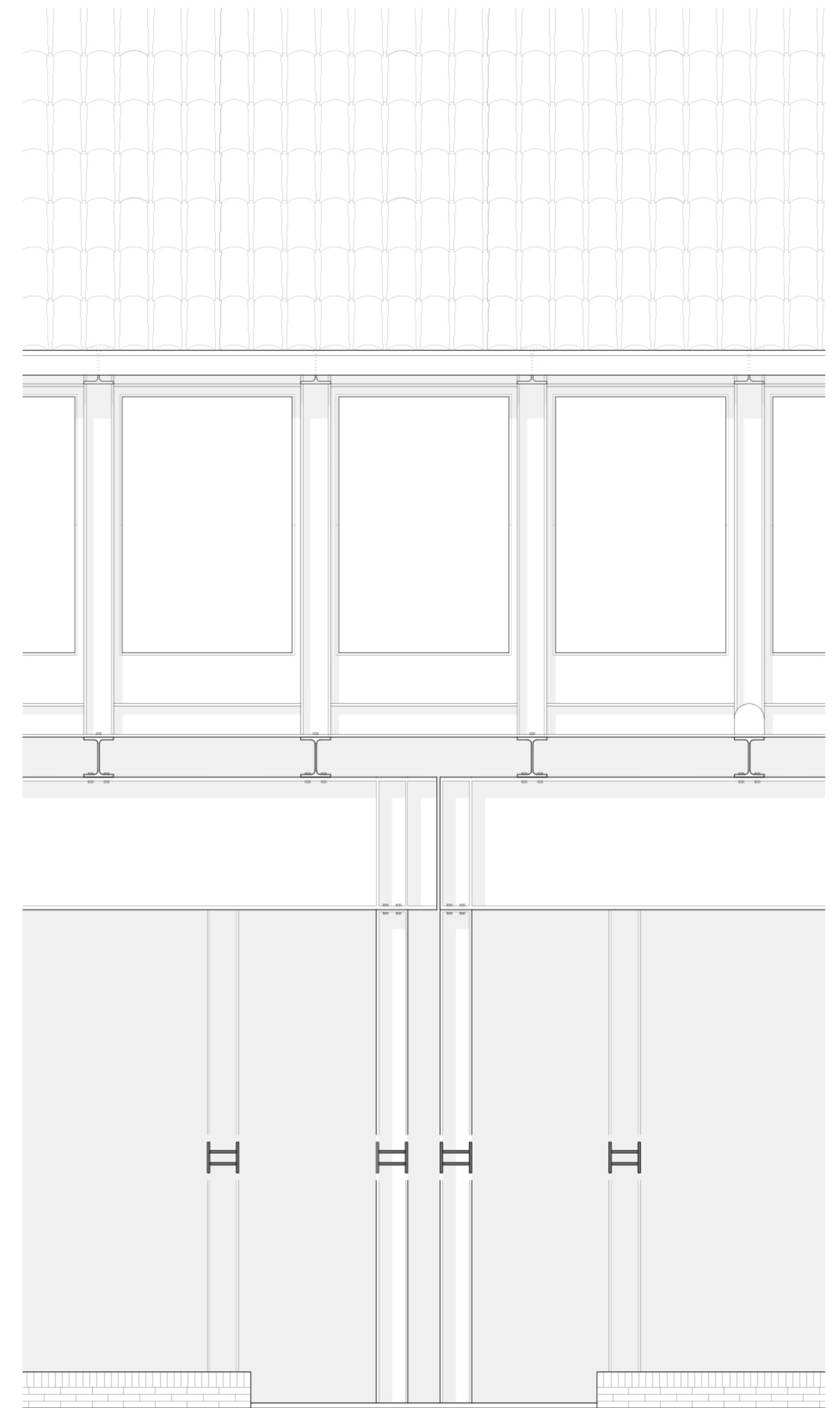


D1. Section A-A'  
Scale 1:40

0 10 20 100 cm



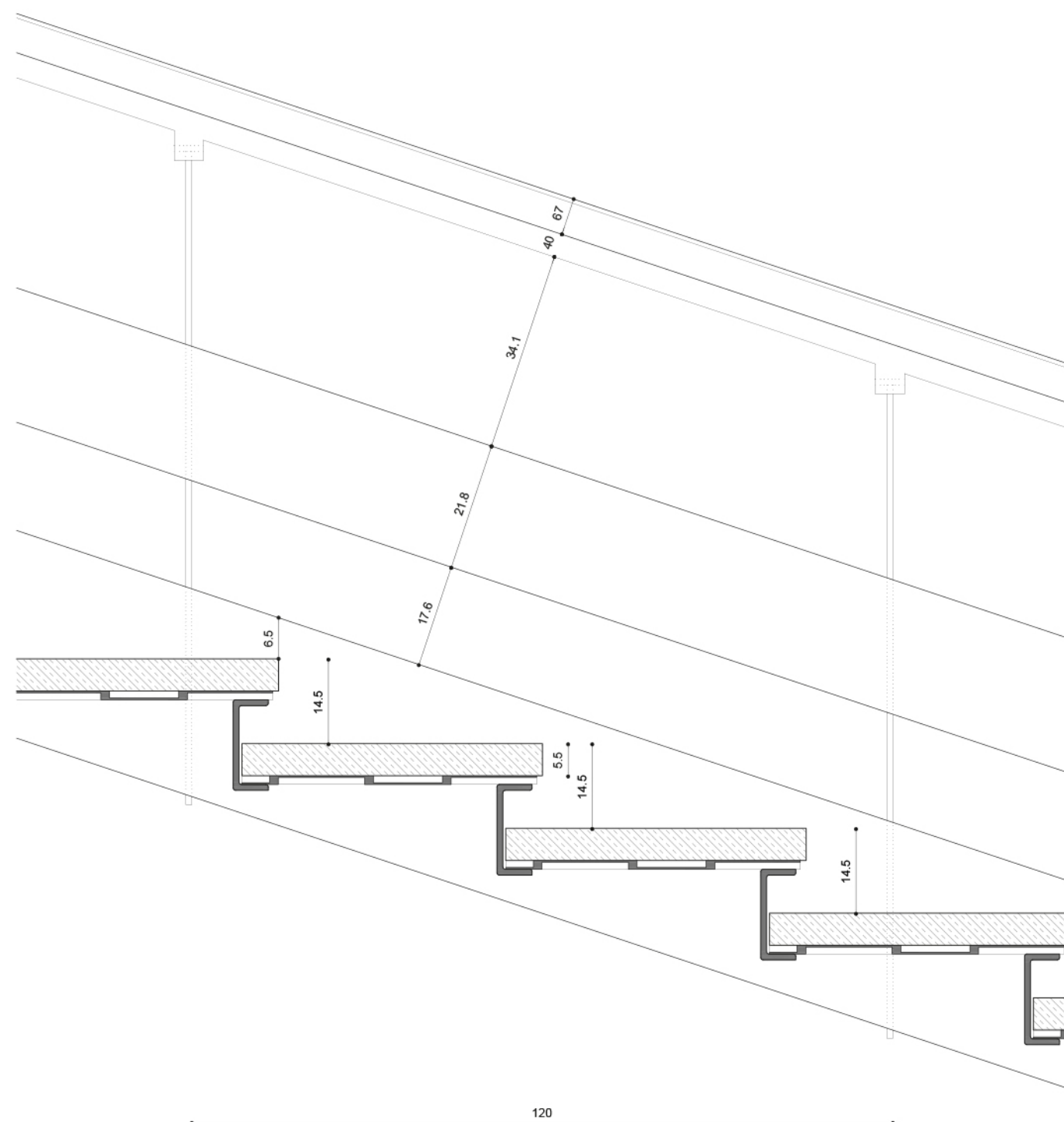
D1. Elevation  
Scale 1:40



D2. Elevation  
Scale 1:40

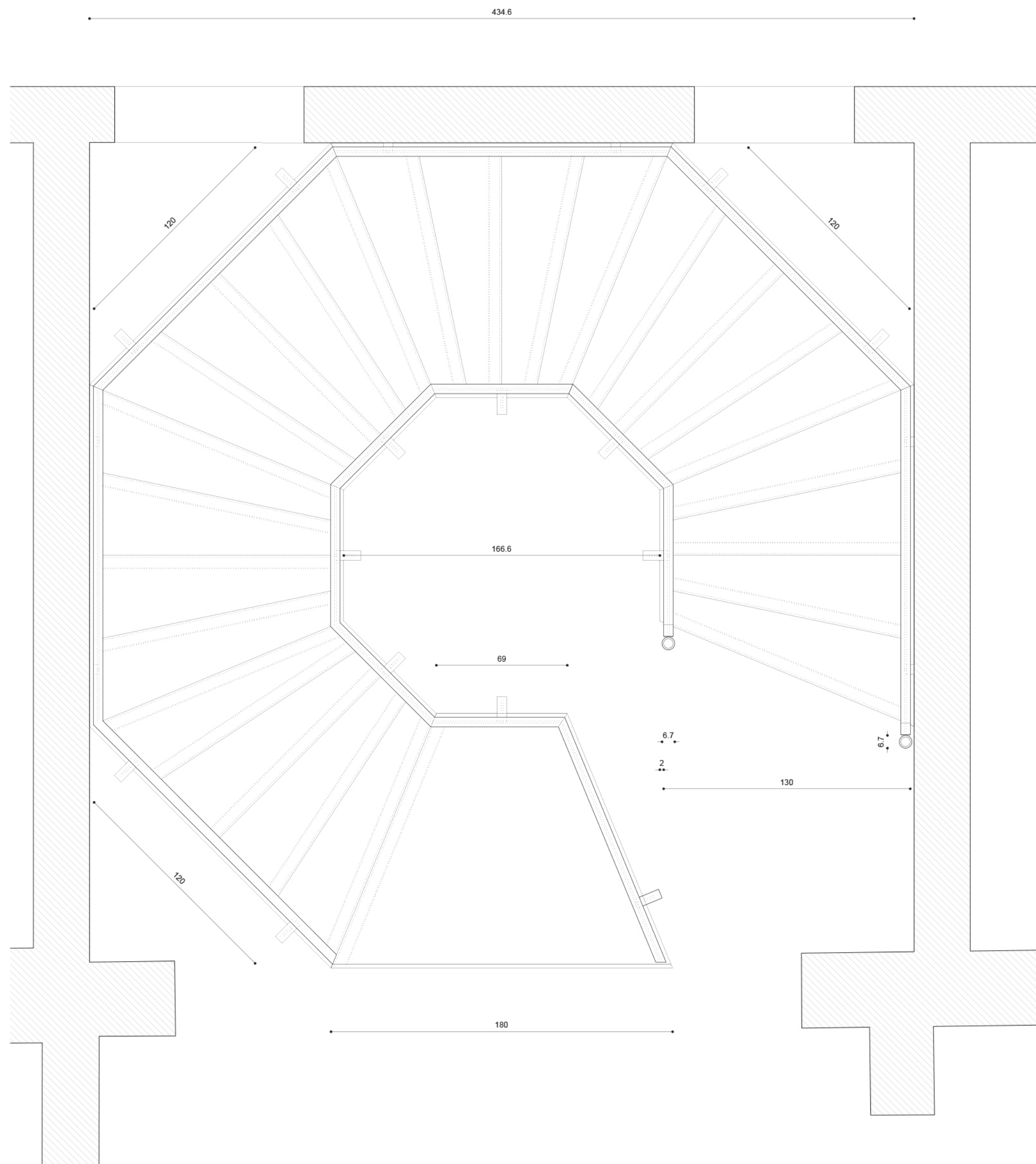


Number of Children	Frequency
0	35.5
1	18.5
2	23
3	36
4	4.3
5	6.7
6	4.3
7	6.7

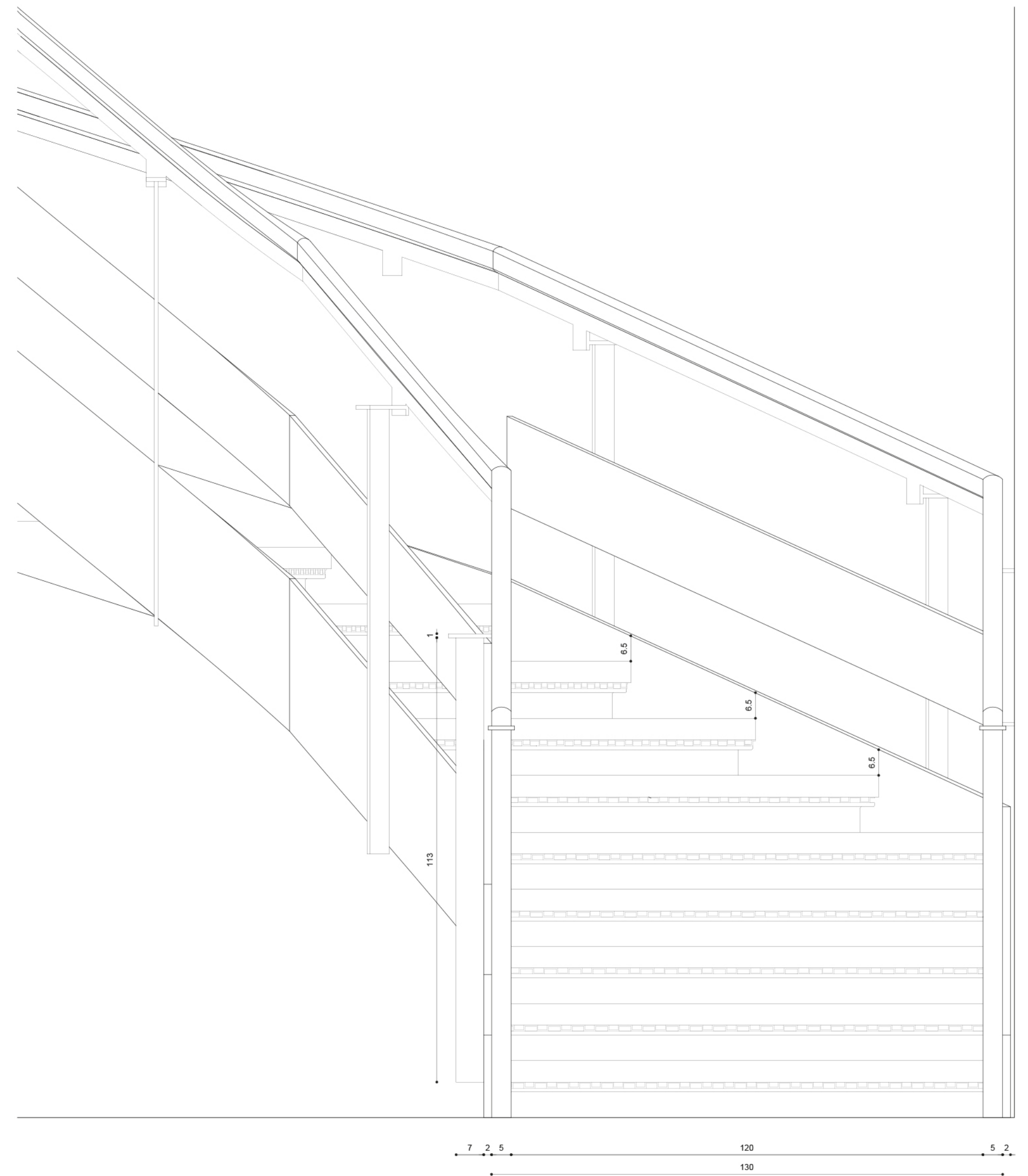


Age Group	Percentage (%)
18-24	35
25-34	25
35-44	15
45-54	10
55-64	8
65-74	6
75-84	4
85+	5

0 10 20 50 1 m



D3 Plan  
Scale 1:20



D3 Elevation  
Scale 1:10

